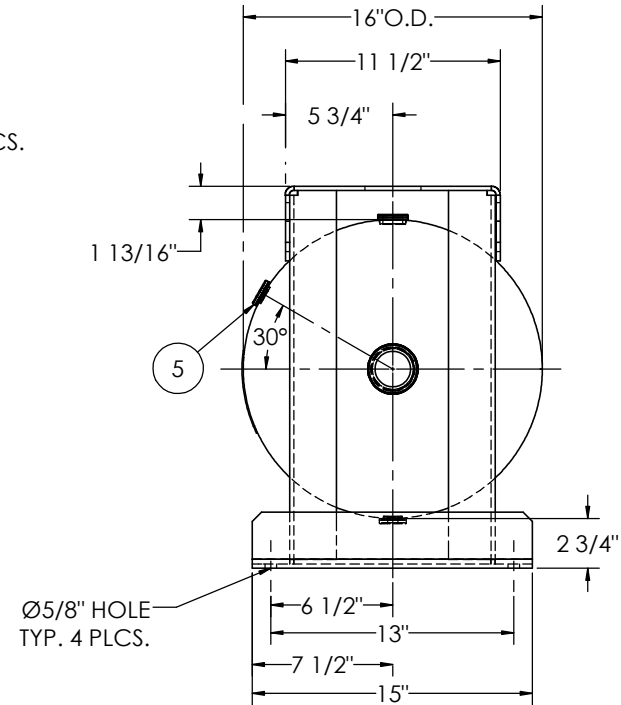
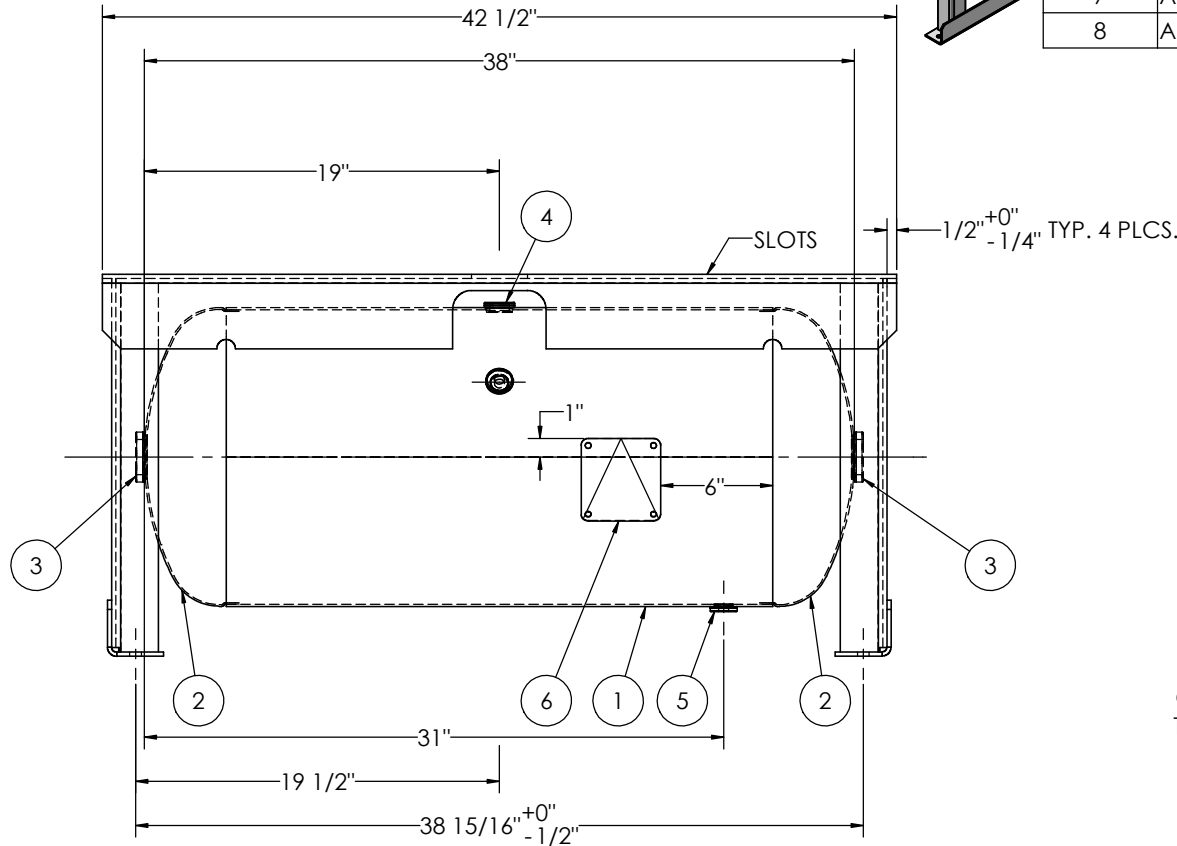


ITEM NO.	PART NO.	DESCRIPTION	QTY.
1	A34917-SL	SHELL LAYOUT FOR 16" O.D. TANK	1
2	H32011	.099 MIN. 16" O.D. 2:1 ELLIP. JOG. HEAD	2
3	F30315	1 1/2"-NPT FLAT FLANGE O-RING	2
4	F31840	3/4"-NPT FLAT FLANGE	1
5	F31826	1/4"-NPT FLAT FLANGE	2
6	A20910	ASME DATA PLATE	1
7	A56100	4GA TOPPLATE	1
8	A91006	4GA LEG ASY.	2



NOTES:

- LEGS ARE NOT TO TOUCH TANK HEADS, 1/8" MINIMUM CLEARANCE ALLOWED.

SPECIFICATIONS

O.D. 16 LGTH. 38 MAWP 200 PSI @ 400°F
 WT. 158 LBS.
 S.A. 14.1 SQ.FT.
 GAL. 30 CU.FT. 4 CRN: F2151.1C
 CODE: ASME Section VIII, Div. 1, LATEST EDITION EXMT UG20(f) CORR ALW 0 SH 0 HD W
 STD. TOLERANCES: M-2461 (UNLESS OTHERWISE NOTED) WELD DETAILS: M-1932



HORIZONTAL AIR RECEIVER

REV.	BY	DESCRIPTION	DATE	APP.
K	WM			JD
L	GB			JD
M	EGB			EGB
N	EGB			EGB
P	TA			TA
Q	UG			MK

RELEASED FOR PRODUCTION
 Q.C. _____ DATE _____



DRAWN BY: DQ

DATE:

APPR. BY: RM

DATE:

SCALE: NONE

DRWG NO. **34917**