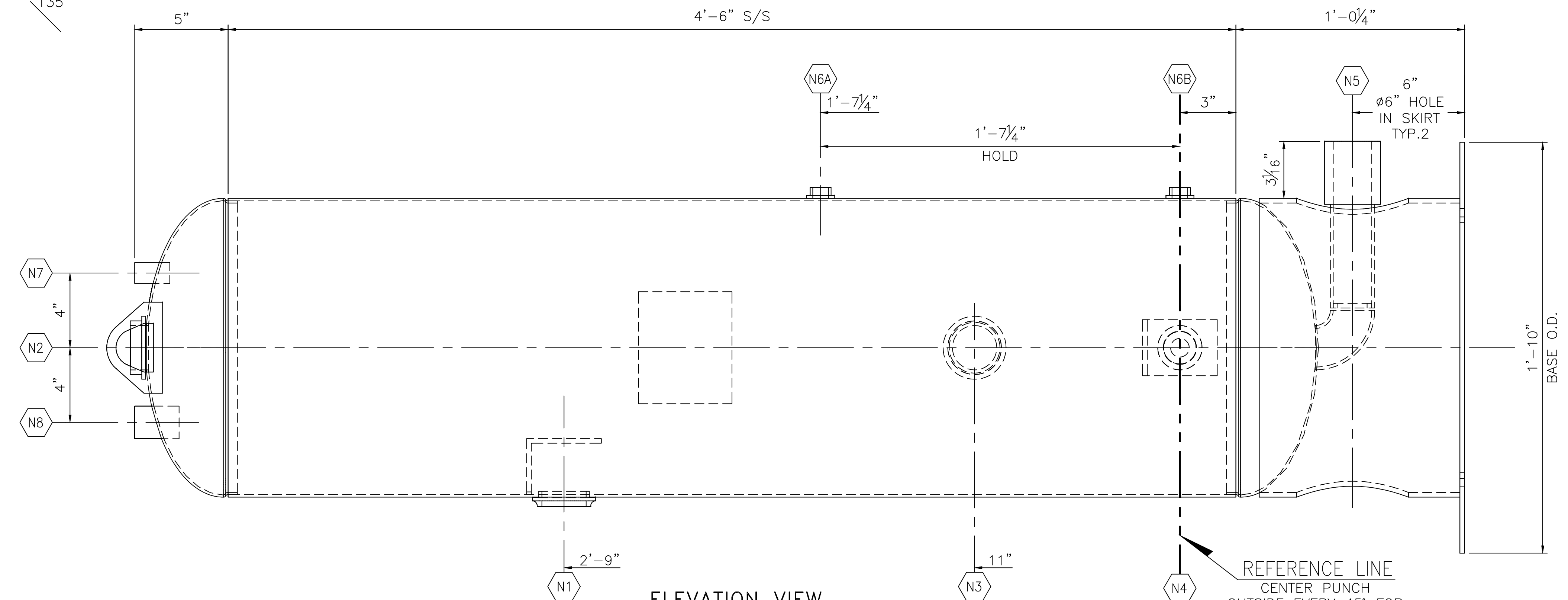
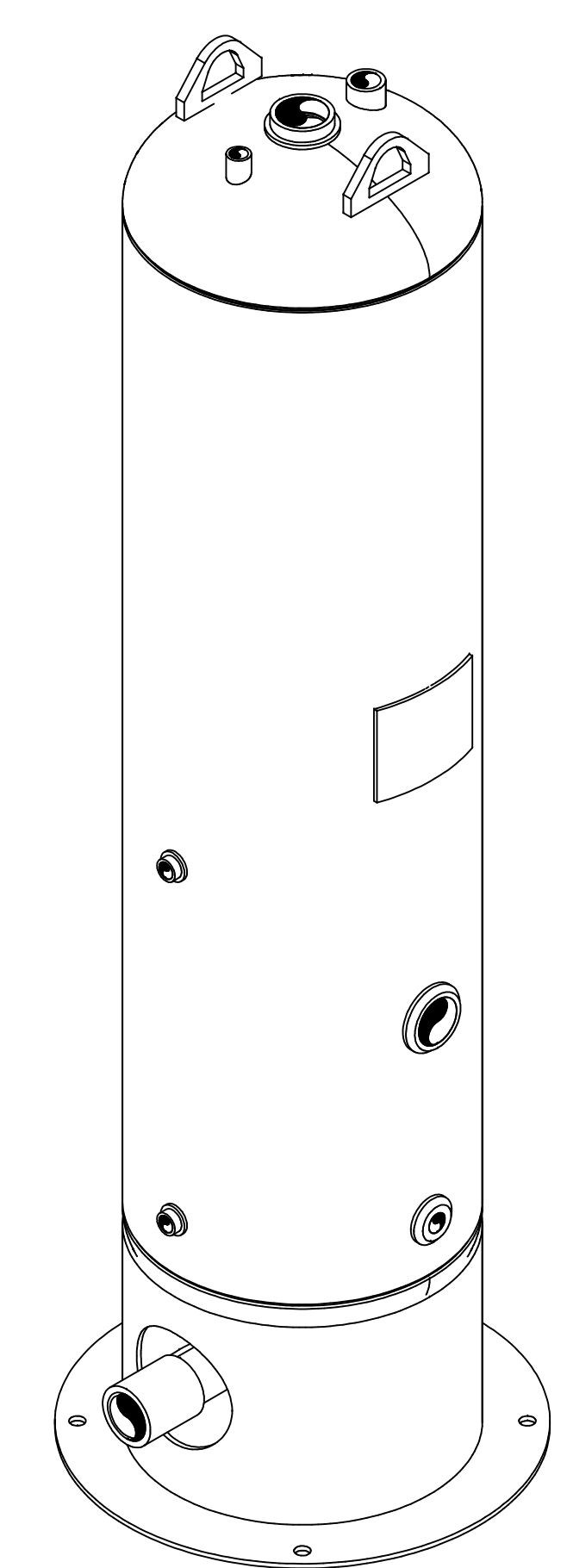


PLAN VIEW
SCALE 3" = 1'-0"
(TRUE ORIENTATION)



ELEVATION VIEW
SCALE 3" = 1'-0"



ISOMETRIC VIEW
SCALE NONE

MARK	REQ'D.	SIZE	RATING & TYPE	SERVICE	NECK O.D.	NECK SCH.	O.S. PROJECTION	I.S.	REINF. PAD SIZE	WELDING DETAIL NO.	A	B	C
N8	1	1"	3000# CPLG	PSV	-	-	-	-	-	WB	3/16"	-	-
N7	1	1/2"	3000# CPLG	AUX	-	-	-	-	-	WB	3/16"	-	-
N6B	1	1/2"	1500# NPT	SIGHT GLASS	-	-	-	-	-	W13	3/16"	-	-
N6A	1	1/2"	1500# NPT	SIGHT GLASS	-	-	-	-	-	W13	3/16"	-	-
N5	1	2"	3000# CPLG	LOWER DRAIN	-	-	FLUSH	-	-	W3	3/16"	-	-
N4	1	1"	1500# NPT	LIQUID OUTLET	-	-	-	-	-	W13	3/16"	-	-
N3	1	2"	1500# NPT	LLC	-	-	-	-	-	W13	3/16"	-	-
N2	1	2"	1500# NPT	GAS OUTLET	-	-	-	-	-	W13	3/16"	-	-
N1	1	2"	1500# NPT	INLET	-	-	-	-	-	W13	3/16"	-	-

NOZZLE SCHEDULE & WELDING DETAILS

NOZZLE NOTES: 1) DRILL AND TAP 1/4" N.P.T. HOLE IN REINFORCING PADS. 2) INSIDE EDGES OF NOZZLE NECKS SHALL BE ROUNDED TO 1/8" RAD. OR HALF THE WALL THICKNESS IF LESS THAN 1/4". 3) GOUGE, GRIND OR CHIP INSIDE TO SOUND METAL BEFORE MAKING WELD "b". 4) NOZZLE PROJ. ARE FROM SHORT SIDE.

NAMEPLATE DATA

CERTIFIED BY

U W MAWP 250 PSI @400 F
 EXT. PRESS -- PSI @ -- F
 RT-NO MDMT-20 F@250 PSI
 CAT# --- YR 2015
 CRN --
 SH GAL 47.64
 HD 2:1 SE --

TOTAL WEIGHT = 195 LBS.

TOLERANCES (EXCEPT AS NOTED)

FRACTIONAL	± 1/8"
DECIMAL	± 0.125"
ANGULAR	± 1°

- FABRICATION NOTES:**
- UNLESS NOTED OTHERWISE, ALL WELDS ARE TO BE 3/16" FILLET WELDS.
 - ALL FLANGE BOLT HOLES TO STRADDLE VESSEL CENTERLINES.
 - EACH CONNECTION TO BE TAGGED W/ ABBREVIATION SERVICE DESCRIPTION

REV	DESCRIPTION	DATE	BY	CHK
A	ISSUED FOR INFORMATION	06/18/15	MCH	JEG
REV	DESCRIPTION	DATE	BY	CHK

MANCHESTER TANK
SINCE 1946

THIS DRAWING IS THE PROPERTY OF MANCHESTER TANK AND IS NOT TO BE USED FOR ANY PURPOSE OTHER THAN THAT FOR WHICH IT IS SPECIFICALLY FURNISHED

CUSTOMER
MANCHESTER TANK

TITLE
VERTICAL GAS SCRUBBER
16" OD x 4'-6" S/S @ 250 PSIG
ELEVATION & PLAN VIEW

DRW. NO.	06/18/15	CHK. BY	JEG	DATE	06/18/15	SCALE	AS NOTED
REV	A	REV	A	REV	A	REV	A

309801-S