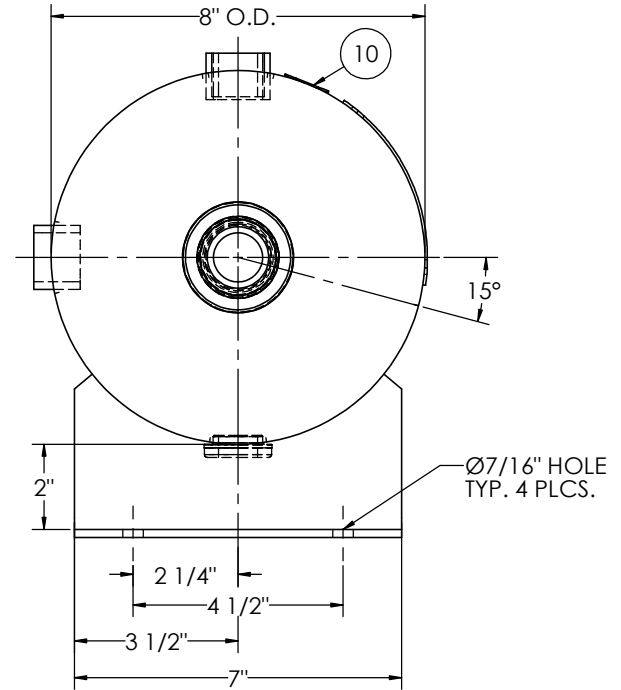
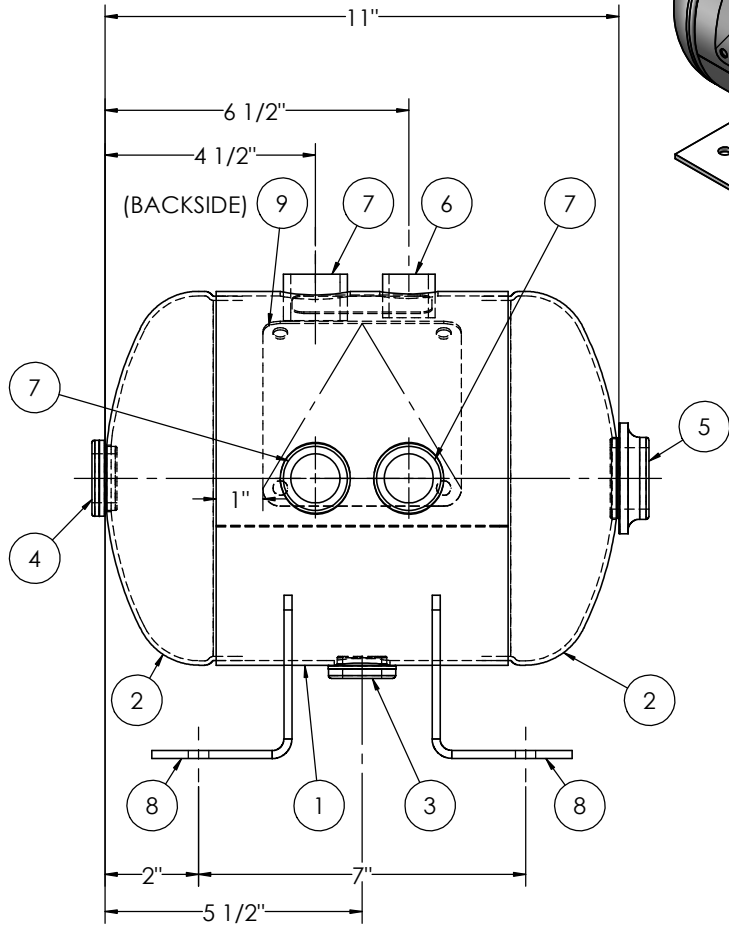
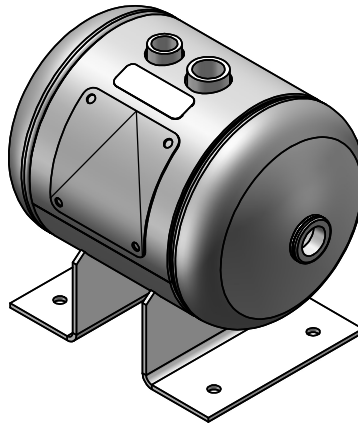


ITEM NO.	PART NO.	DESCRIPTION	QTY.
1	A304980-SL	SHELL LAYOUT FOR 6" TANK	1
2	H10511	.094 MIN. 8" O.D. 2:1 ELLIP. JOG. HEAD	2
3	F10250	1/2"-NPT FLAT FLANGE	1
4	F31840	3/4"-NPT FLAT FLANGE	1
5	F10370	1"-NPT FLAT FLANGE	1
6	F10260	1/2"-NPT HALF COUPLING	1
7	F10170	3/4"-NPT HALF COUPLING	3
8	A88144	ANGLE BRACKET	2
9	A20910	ASME DATA PLATE	1
10	S36195	DECAL 1X3 CAUTION TIGHTEN	1



NOTES:

- ALL PLUGS TO BE LOOSENED TO HAND TIGHT PLUS ONE QUARTER TURN WITH WRENCH PRIOR TO SHIPMENT.

SPECIFICATIONS

O.D. 8 LGTH. 11
 WT. 16 LBS.
 S.A. 2.1 SQ.FT.
 GAL. 2.0 CU.FT. 0.26 CRN: H9635.5123467890
 CODE: ASME SEC. VIII DIV. I LATEST EDITION
 STD. TOLERANCES: M-2461 (UNLESS OTHERWISE NOTED)

MAWP 200 PSI @ 400°F
 W
 EXMT UG20(f) CORR ALW 0 SH 0 HD
 WELD DETAILS: M-1932



HORIZONTAL AIR RECEIVER

RELEASED FOR PRODUCTION
 Q.C. _____ DATE _____

REVISONS		DATE	APP.
REV.	BY	DESCRIPTION	
A	EGB		EGB
B	MK		MK
C	UG		MK

DRAWN BY: EGB	DATE:
APPR. BY: EGB	DATE:
SCALE: NONE	DRWG NO. 304980

