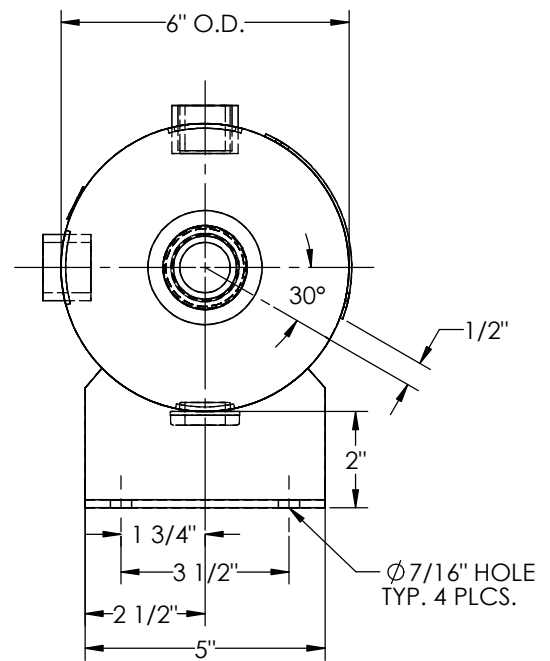
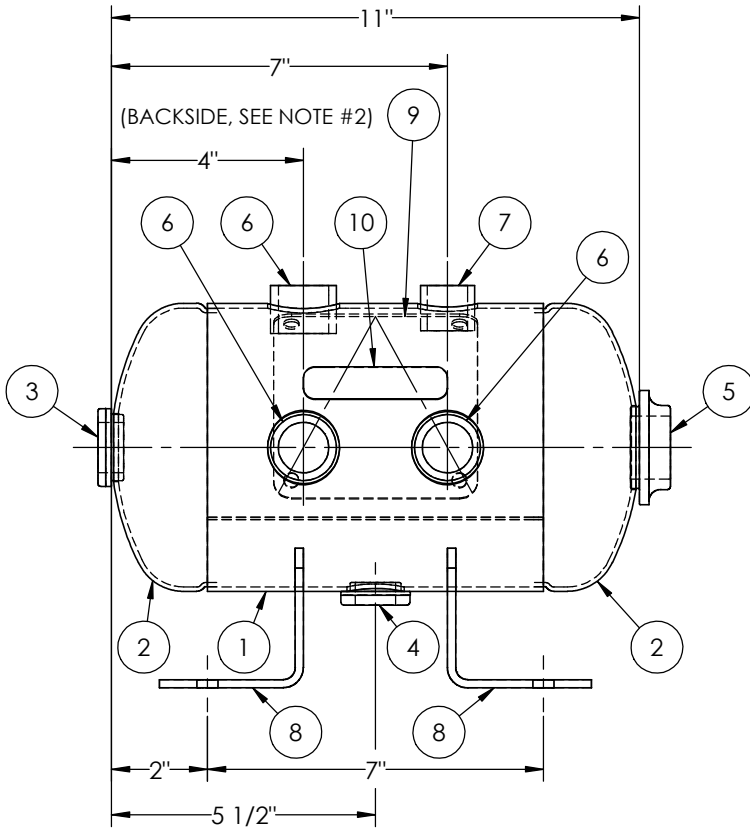


ITEM NO.	PART NO.	DESCRIPTION	QTY.
1	A304978-SL	SHELL LAYOUT FOR 6" TANK	1
2	H10291	.094 MIN. 6" O.D. 2:1 ELLIP. JOG. HEAD	2
3	F31840	3/4"-NPT FLAT FLANGE	1
4	F10250	1/2"-NPT FLAT FLANGE	1
5	F10370	1"-NPT FLAT FLANGE	1
6	F10170	3/4"-NPT HALF COUPLING	3
7	F10260	1/2"-NPT HALF COUPLING	1
8	A88080	ANGLE BRACKET	2
9	A20910	ASME DATA PLATE	1
10	S36195	DECAL 1X3 CAUTION TIGHTEN	1



- NOTES:
- ALL PLUGS TO BE LOOSENED TO HAND TIGHT PLUS ONE QUARTER TURN WITH WRENCH PRIOR TO SHIPMENT.
  - LOCATE NAMEPLATE 1/2" UP FROM THE LONG WELD SEAM, CENTER BETWEEN HEADS.

SPECIFICATIONS	
O.D. 6 LGTH. 11	MAWP 200 PSI @ 400°F
WT. 13 LBS.	
S.A. 1.6 SQ.FT.	
GAL. 1.1 CU.FT.0.15 CRN: F2188.1234567890	
CODE: ASME Section VIII, Div.1, LATEST EDITION	EXMT UG20(f) CORR ALW 0 SH 0 HD
STD. TOLERANCES: M-2461 (UNLESS OTHERWISE NOTED)	WELD DETAILS: M-1932



**HORIZONTAL AIR RECEIVER**

RELEASED FOR PRODUCTION  
 Q.C. \_\_\_\_\_ DATE \_\_\_\_\_

REVISIONS			
REV.	BY	DESCRIPTION	DATE
A	MR		
B	EGB		
C	MK		
D	RK		

DRAWN BY: EGB	DATE:
APPR. BY: EGB	DATE:
SCALE: NONE	DRWG NO. 304978

