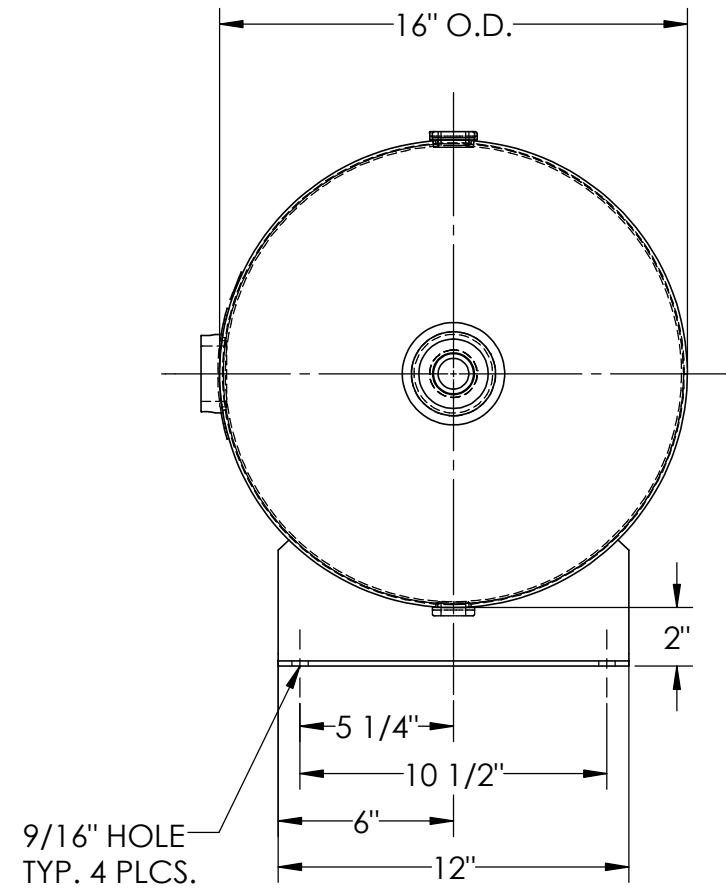
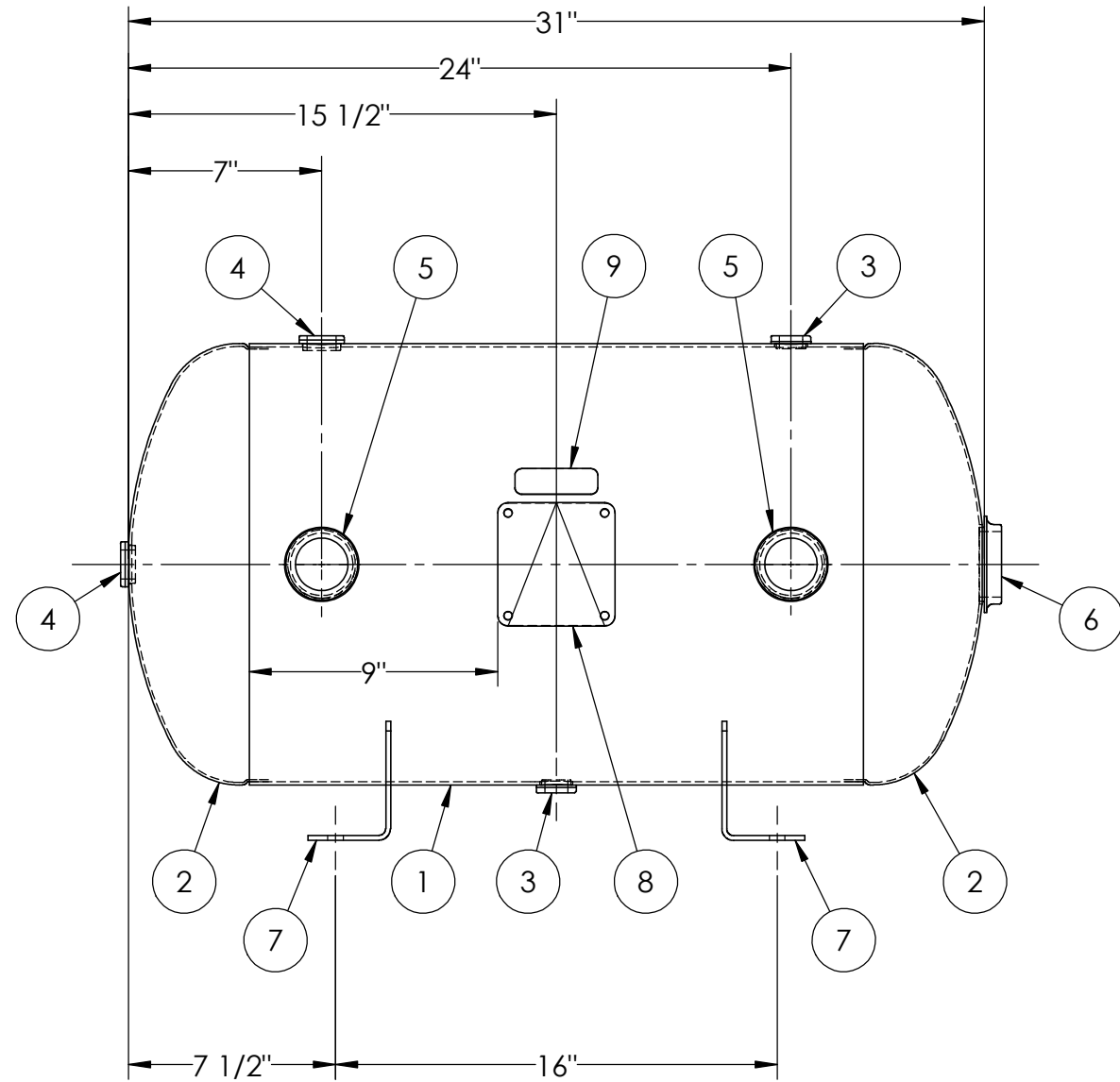


ITEM NO.	PART NO.	DESCRIPTION	QTY.
1	A304944-SL	SHELL LAYOUT FOR 16" TANK	1
2	H32011	.099 MIN. 16" O.D. 2:1 ELLIP. JOG. HEAD	2
3	F10250	1/2"-NPT FLAT FLANGE	2
4	F31840	3/4"-NPT FLAT FLANGE	2
5	F30317	1 1/2"-NPT RADIAL FLANGE O-RING	2
6	F10440	2"-NPT FLAT FLANGE	1
7	A84499	ANGLE BRACKET	2
8	A20910	ASME DATA PLATE	1
9	S36195	DECAL 1X3 CAUTION TIGHTEN	1



NOTES:
 1. ALL PLUGS TO BE LOOSENED TO HAND TIGHT PLUS ONE QUARTER TURN WITH WRENCH PRIOR TO SHIPMENT.

SPECIFICATIONS			
O.D. 16	LGTH. 31	MAWP 200 PSI @ 400°F	
WT. 70	LBS.		
S.A. 11.6	SQ.FT.		
GAL. 23.8	CU.FT.3.2	CRN: F2151.1C	W
CODE: ASME Section VIII, Div.1, LATEST EDITION		EXMT UG20(f) CORR ALW 0 SH 0 HD	
STD. TOLERANCES: M-2461 (UNLESS OTHERWISE NOTED)		WELD DETAILS: M-1932	



HORIZONTAL AIR RECEIVER

RELEASED FOR PRODUCTION
 Q.C. _____ DATE _____

REVISIONS			
REV.	BY	DESCRIPTION	DATE
A	EGB		
B	DS		
C	RK		

DRAWN BY:	EGB	DATE:	
APP. BY:	EGB	DATE:	
SCALE:	NONE	DRWG NO.	304944

