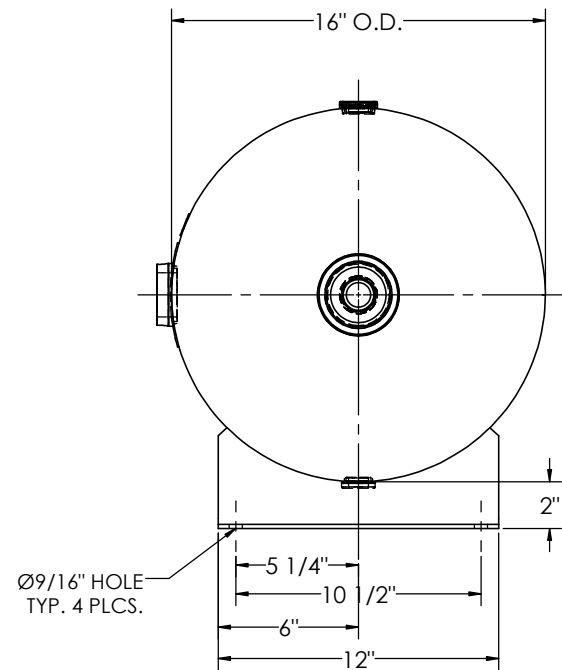
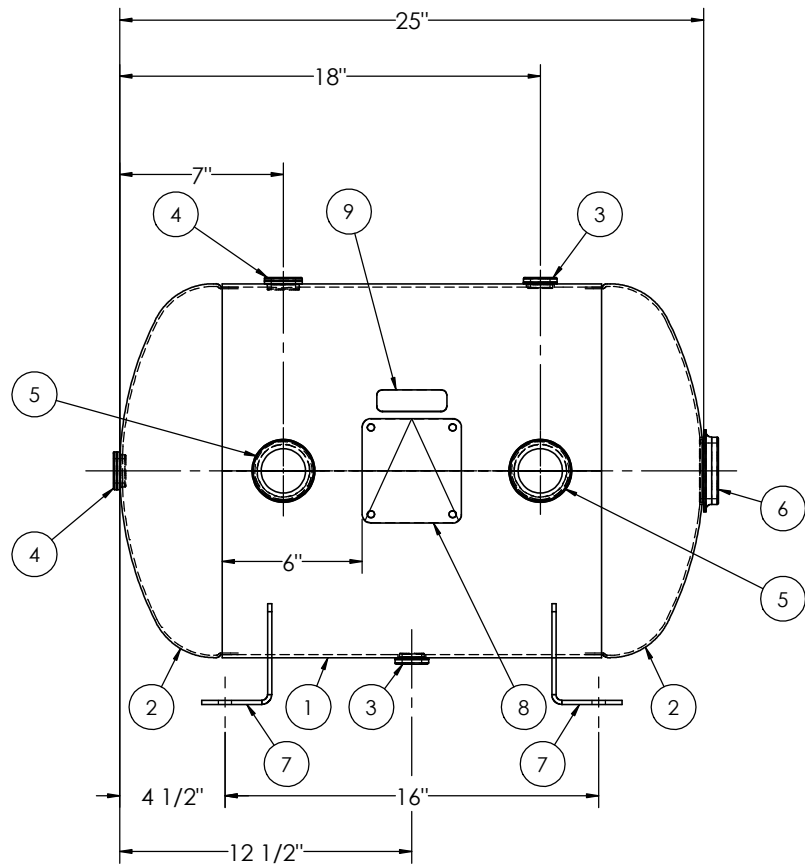


ITEM NO.	PART NO.	DESCRIPTION	QTY.
1	A304942-SL	SHELL LAYOUT FOR 16" TANK	1
2	H32011	.099 MIN. 16" O.D. 2:1 ELLIP. JOG. HEAD	2
3	F10250	1/2"-NPT FLAT FLANGE	2
4	F31840	3/4"-NPT FLAT FLANGE	2
5	F30317	1 1/2"-NPT RADIAL FLANGE O-RING	2
6	F10440	2"-NPT FLAT FLANGE	1
7	A84499	ANGLE BRACKET	2
8	A20910	ASME DATA PLATE	1
9	S36195	DECAL 1X3 CAUTION TIGHTEN	1



NOTES:

- ALL PLUGS TO BE LOOSENED TO HAND TIGHT PLUS ONE QUARTER TURN WITH WRENCH PRIOR TO SHIPMENT.

SPECIFICATIONS

O.D. 16 LGTH. 25
 WT. 59 LBS.
 S.A. 9.5 SQ.FT.
 GAL. 18.7 CU.FT. 2.5 CRN: F2151.1C
 CODE: ASME Section VIII, Div. I, LATEST EDITION
 STD. TOLERANCES: M-2461 (UNLESS OTHERWISE NOTED)

MAWP 200 PSI @ 400°F
 W
 EXMT UG20(f) CORR ALW 0 SH 0 HD
 WELD DETAILS: M-1932



HORIZONTAL AIR RECEIVER

RELEASED FOR PRODUCTION
 Q.C. _____ DATE _____

REVISIONS			
REV.	BY	DESCRIPTION	DATE
A	EGB		
B	KG		
C	UG		

DRAWN BY:	EGB	DATE:	
APPR. BY:	EGB	DATE:	
SCALE:	NONE	DRWG NO.	304942

