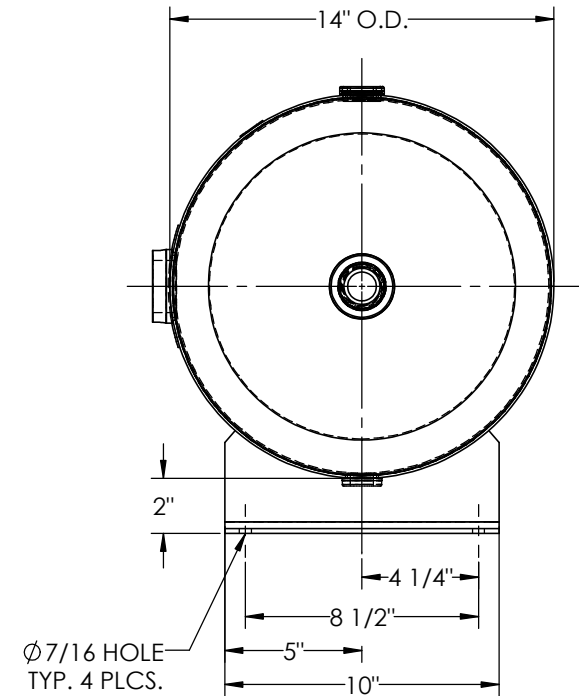
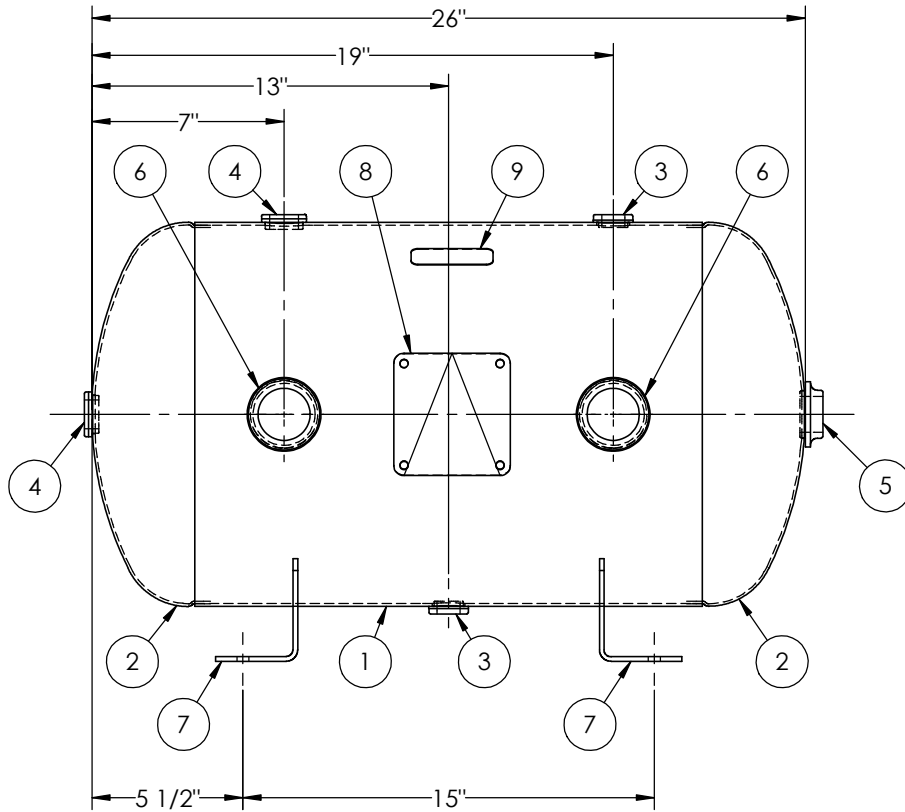


ITEM NO.	PART NO.	DESCRIPTION	QTY.
1	A304940-SL	SHELL LAYOUT FOR 14" TANK	1
2	H12081	.094 MIN. 14" O.D. 2:1 ELLIP. JOG. HEAD	2
3	F10250	1/2"-NPT FLAT FLANGE	2
4	F31840	3/4"-NPT FLAT FLANGE	2
5	F10370	1"-NPT FLAT FLANGE	1
6	F30317	1 1/2"-NPT RADIAL FLANGE O-RING	2
7	A84498	ANGLE BRACKET	2
8	A20910	ASME DATA PLATE	1
9	S36195	DECAL 1X3 CAUTION TIGHTEN	1



NOTES:
 1. ALL PLUGS TO BE LOOSENED TO HAND TIGHT PLUS ONE QUARTER TURN WITH WRENCH PRIOR TO SHIPMENT.

SPECIFICATIONS	
O.D. 14 LGTH. 26	MAWP 200 PSI @ 400°F
WT. 47 LBS.	
S.A. 8.6 SQ.FT.	
GAL. 15.2 CU.FT.2.03 CRN: H5605.5123467890	
CODE: ASME Section VIII, Div.1, LATEST EDITION	W
STD. TOLERANCES: M-2461 (UNLESS OTHERWISE NOTED)	EXMT UG20(f) CORR ALW 0 SH 0 HD
	WELD DETAILS: M-1932



HORIZONTAL AIR RECEIVER

RELEASED FOR PRODUCTION
 Q.C. _____ DATE _____

REVISIONS			
REV.	BY	DATE	APP.
A	EGB		EGB
B	EGB		EGB
C	EGB		EGB
D	MK		DS
E	RK		MK

DRAWN BY:	EGB	DATE:	
APPR. BY:	EGB	DATE:	
SCALE:	NONE	DRWG NO.	304940

