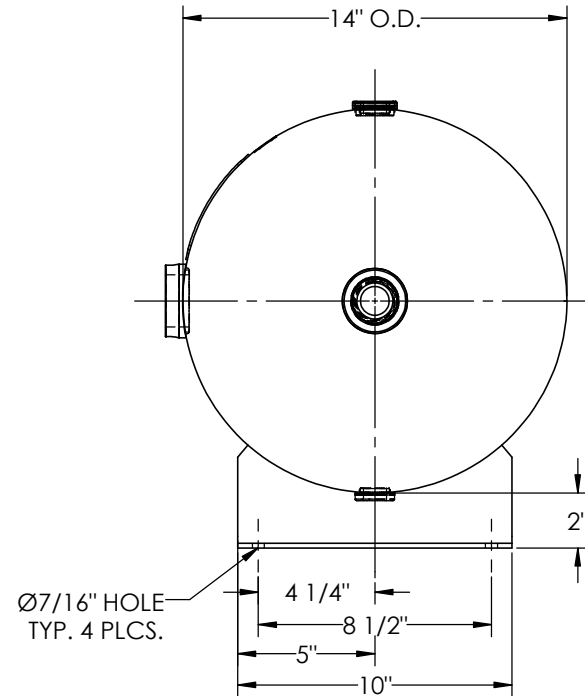
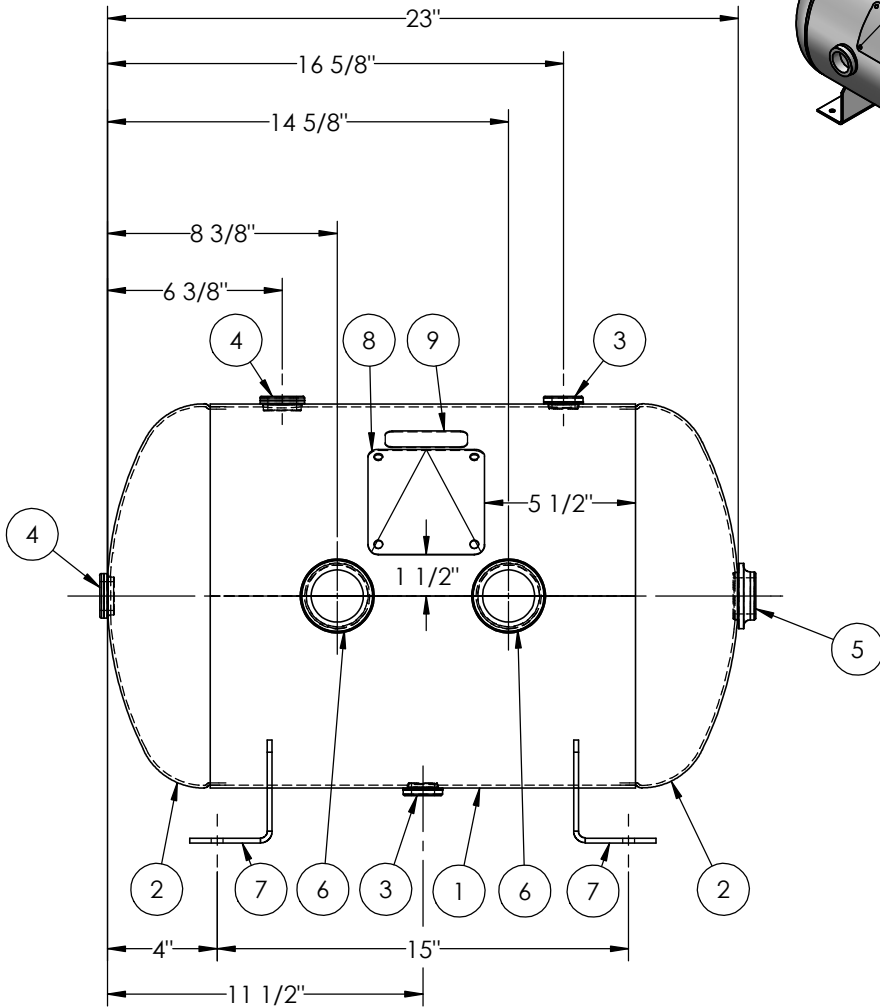


ITEM NO.	PART NO.	DESCRIPTION	QTY.
1	A304938-SL	SHELL LAYOUT FOR 14" TANK	1
2	H12081	.094 MIN. 14" O.D. 2:1 ELLIP. JOG. HEAD	2
3	F10250	1/2"-NPT FLAT FLANGE	2
4	F31840	3/4"-NPT FLAT FLANGE	2
5	F10370	1"-NPT FLAT FLANGE	1
6	F30317	1 1/2"-NPT RADIAL FLANGE O-RING	2
7	A84498	ANGLE BRACKET	2
8	A20910	ASME DATA PLATE	1
9	S36195	DECAL 1X3 CAUTION TIGHTEN	1



NOTES:  
 1. ALL PLUGS TO BE LOOSENED TO HAND TIGHT PLUS ONE QUARTER TURN WITH WRENCH PRIOR TO SHIPMENT.

O.D. 14 LGTH. 23  
 WT. 42 LBS.  
 S.A. 7.6 SQ.FT.  
 GAL. 13.3 CU.FT.1.8 CRN: H5605.5123467890  
 CODE: ASME Section. VIII, Div. I, LATEST EDITION  
 STD. TOLERANCES: M-2461 (UNLESS OTHERWISE NOTED)

MAWP 200 PSI @ 400°F

EXMT UG20(f) CORR ALW 0 SH 0 HD  
 WELD DETAILS: M-1932



**HORIZONTAL AIR RECEIVER**

REVISIONS			
REV.	BY	DESCRIPTION	DATE
A	EGB		
B	EGB		
C	NS		
D	KG		
E	UG		

DRAWN BY:	EGB	DATE:	
APPR. BY:	EGB	DATE:	
SCALE:	NONE	DRWG NO.	<b>304938</b>

RELEASED FOR PRODUCTION  
 Q.C. \_\_\_\_\_ DATE \_\_\_\_\_

