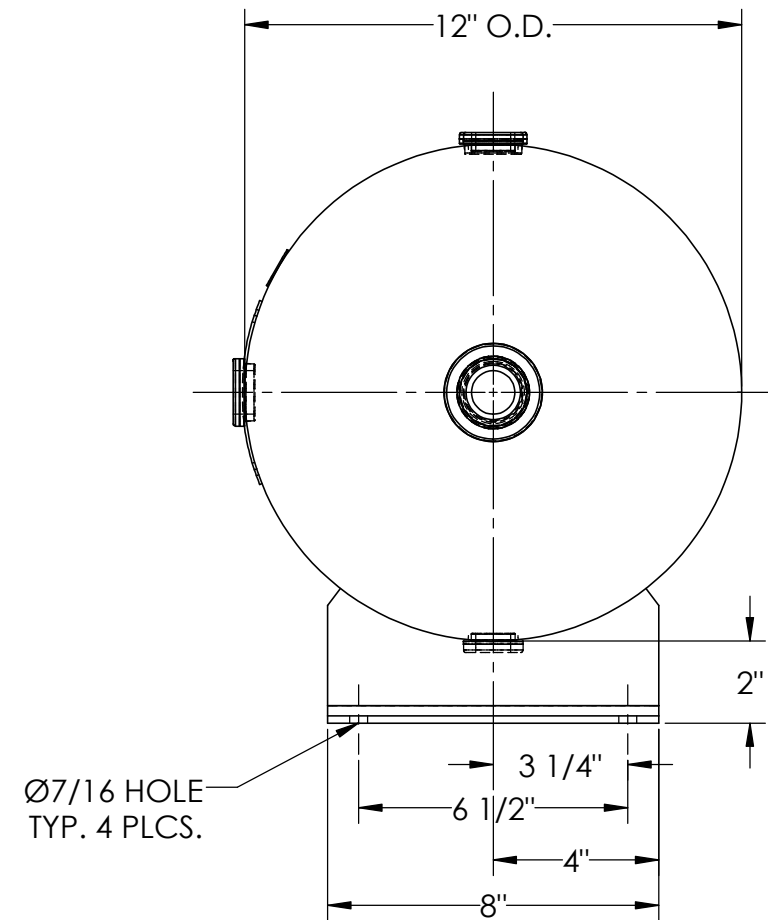
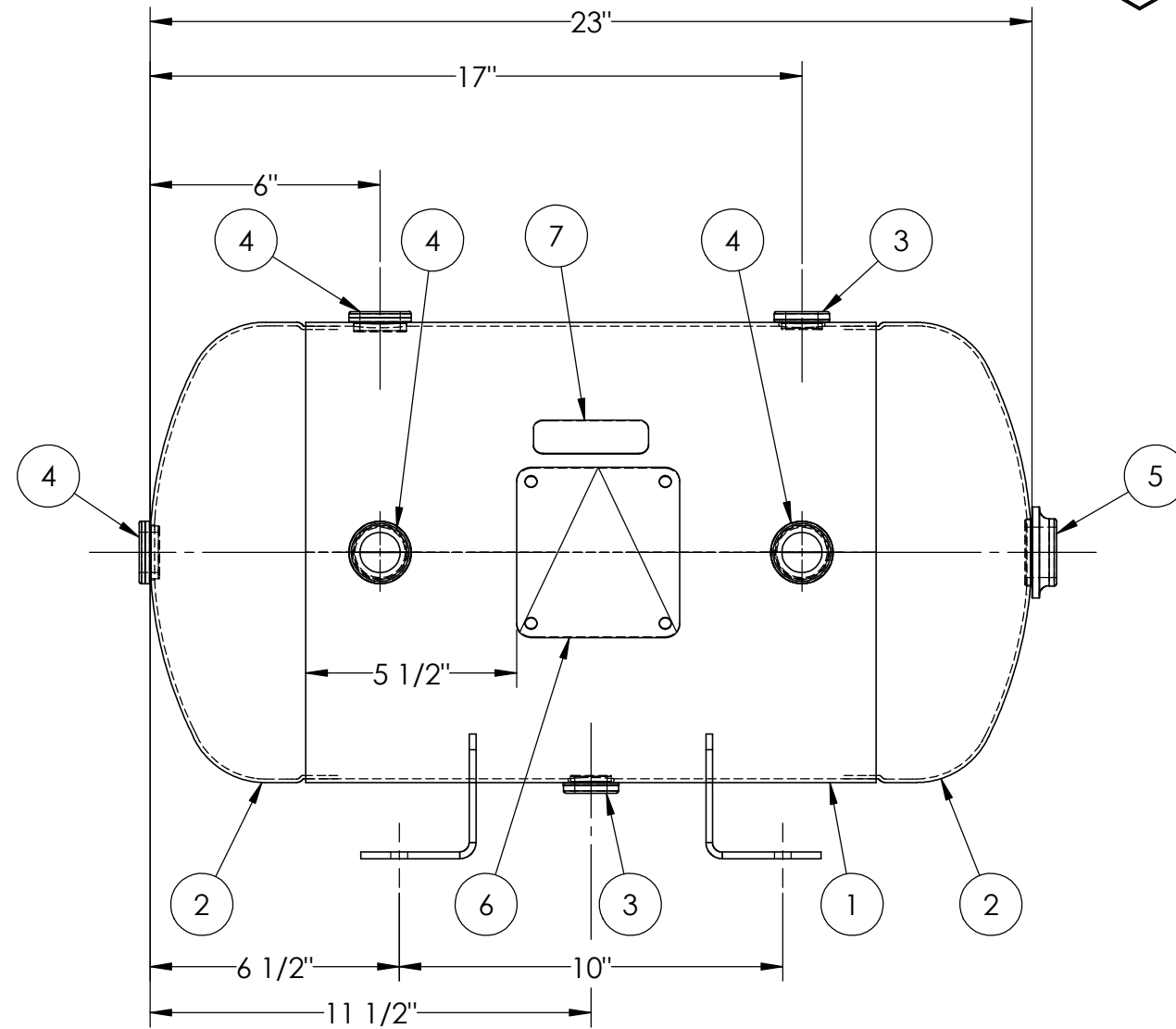


ITEM NO.	PART NO.	DESCRIPTION	QTY.
1	A304936-SL	SHELL LAYOUT FOR 12" TANK	1
2	H32061	.094 MIN. 12" O.D. 2:1 ELLIP. JOG. HEAD	2
3	F10250	1/2"-NPT FLAT FLANGE	2
4	F31840	3/4"-NPT FLAT FLANGE	4
5	F10370	1"-NPT FLAT FLANGE	1
6	A20910	ASME DATA PLATE	1
7	S36195	DECAL 1X3 CAUTION TIGHTEN	1
11	A84497	ANGLE BRACKET	2



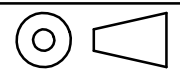
- NOTES:
- INTERIOR OF TANK MUST BE INSPECTED AND CLEANED OF MOST FOREIGN PARTICULATE MATTER.
  - ALL PLUGS TO BE LOOSENED TO HAND TIGHT PLUS ONE QUATER TURN WITH WRENCH PRIOR TO SHIPMENT.

SPECIFICATIONS			
O.D. 12	LGTH. 23	MAWP 200 PSI @ 400°F	
WT. 34	LBS.		
S.A. 6.5	SQ.FT.		
GAL. 10	CU.FT.1.3	CRN: F1144.1C	W
CODE: ASME Section VIII Div. I, LATEST EDITION		EXMT UG20(f) CORR ALW 0 SH 0 HD	
STD. TOLERANCES: M-2461 (UNLESS OTHERWISE NOTED)		WELD DETAILS: M-1932	



**HORIZONTAL AIR RECEIVER**

RELEASED FOR PRODUCTION  
Q.C. \_\_\_\_\_ DATE \_\_\_\_\_



REVISIONS			
REV.	BY	DESCRIPTION	DATE
A	EGB		
B	EGB		
C	MK		
D	UG		

DRAWN BY: EGB	DATE:
APPR. BY: EGB	DATE:
SCALE: NONE	DRWG NO. 304936