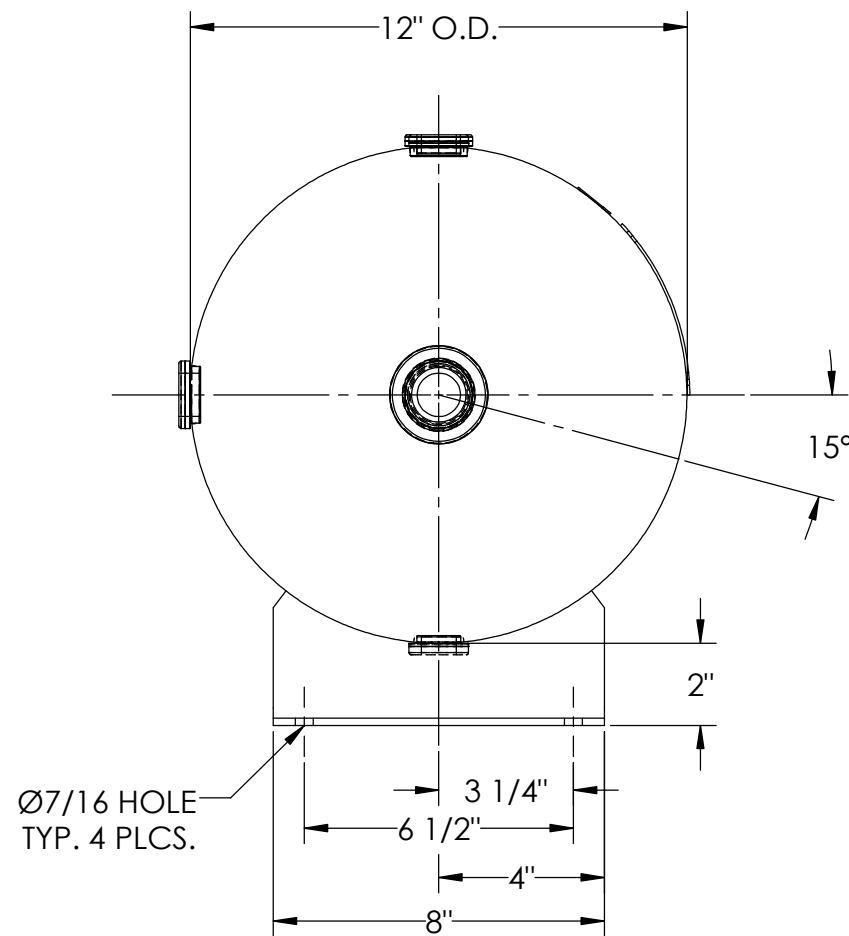
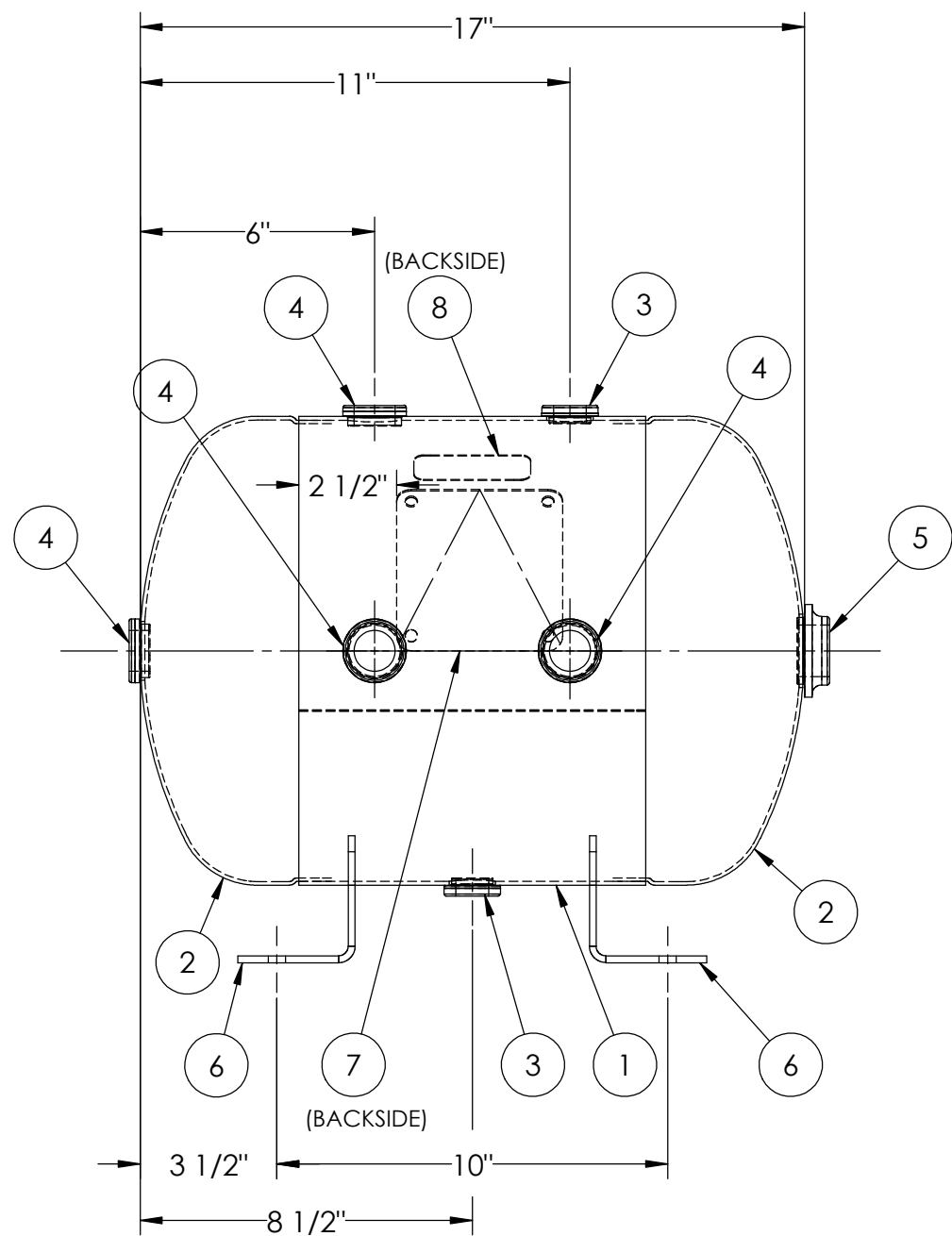


ITEM NO.	PART NO.	DESCRIPTION	QTY.
1	A304934-SL	SHELL LAYOUT FOR 12" DIA. TANK	1
2	H32061	.094 MIN. 12" O.D. 2:1 ELLIP. JOG. HEAD	2
3	F10250	1/2"-NPT FLAT FLANGE	2
4	F31840	3/4"-NPT FLAT FLANGE	4
5	F10370	1"-NPT FLAT FLANGE	1
6	A84497	ANGLE BRACKET	2
7	A20910	ASME DATA PLATE	1
8	S36195	DECAL 1X3 CAUTION TIGHTEN	1



NOTES:

- INTERIOR OF TANK MUST BE INSPECTED AND CLEANED OF MOST FOREIGN PARTICULATE MATTER.
- ALL PLUGS TO BE LOOSENED TO HAND TIGHT PLUS ONE QUARTER TURN WITH WRENCH PRIOR TO SHIPMENT.

SPECIFICATIONS

O.D. 12 LGTH. 17
 WT. 27 LBS.
 S.A. 4.9 SQ.FT.
 GAL. 7 CU.FT.0.94 CRN: F1144.1C
 CODE: ASME Section VIII, Div. I, LATEST EDITION
 STD. TOLERANCES: M-2461 (UNLESS OTHERWISE NOTED)

MAWP 200 PSI @ 400°F
 W
 EXMT UG20(f) CORR ALW 0 SH 0 HD
 WELD DETAILS: M-1932



HORIZONTAL AIR RECEIVER

REV.		BY	DESCRIPTION	DATE	APP.
A		EGB			EGB
B		EGB			EGB
C		EGB			EGB
D		MK			DW
E		UG			MK

DRAWN BY:	EGB	DATE:	
APPR. BY:	EGB	DATE:	
SCALE:	NONE	DRWG NO.	304934

RELEASED FOR PRODUCTION
 Q.C. _____ DATE _____

