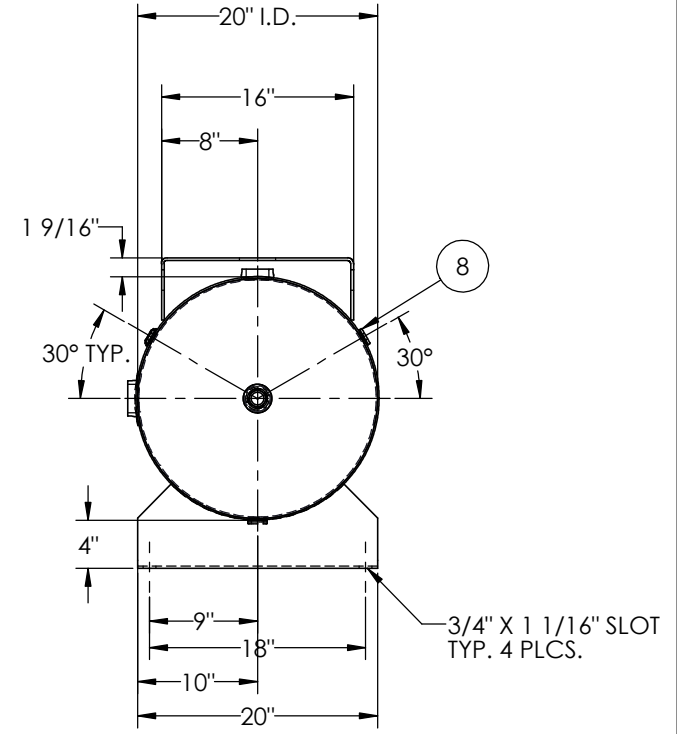
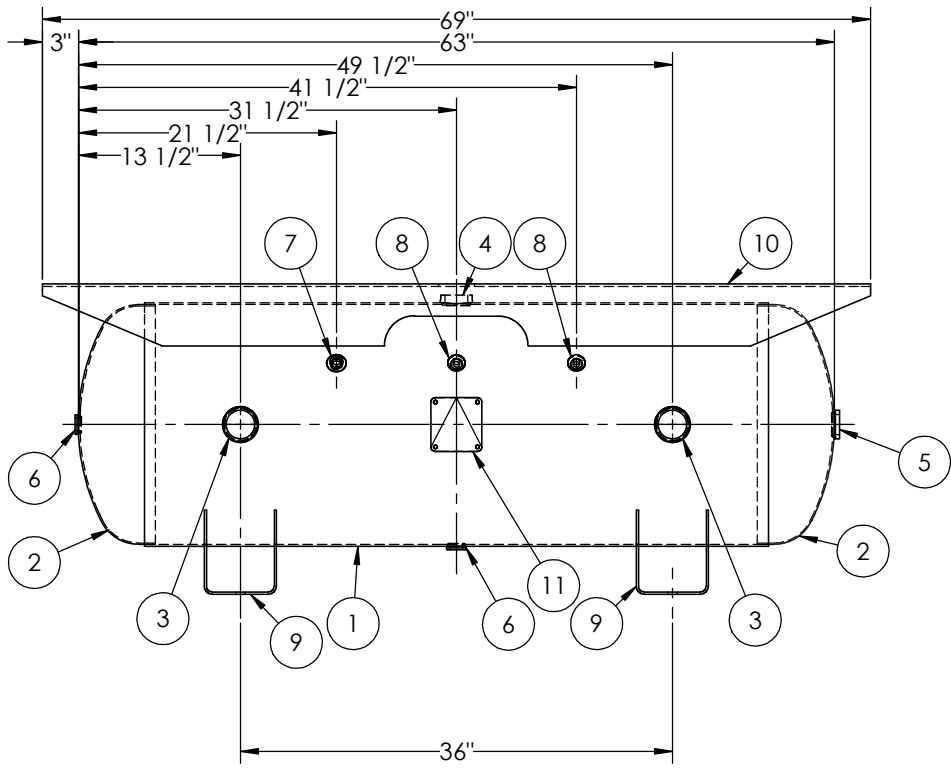




ITEM NO.	PART NO.	DESCRIPTION	QTY.
1	303977-SL	SHELL LAYOUT FOR 20" TANK	1
2	H32020	.124 MIN. 20" O.D. 2:1 ELLIP. PLAIN HEAD	2
3	F30318	2"-NPT RADIAL FLANGE O-RING	2
4	F30317	1 1/2"-NPT RADIAL FLANGE O-RING	1
5	F10360	1 1/4"-NPT FLAT FLANGE	1
6	F31840	3/4"-NPT FLAT FLANGE	2
7	F10300	3/8"-NPT FLAT FLANGE	1
8	F31826	1/4"-NPT 1500# FLAT FLANGE	3
9	A88124	SADDLE	2
10	A98358	TOPPLATE	1
11	A20910	ASME DATA PLATE	1



NOTES:

RELEASED FOR PRODUCTION  
Q.C. \_\_\_\_\_ DATE \_\_\_\_\_

SPECIFICATIONS	
I.D. 20 LGTH. 63	MAWP 200 PSI @ 400°F
WT. 334 LBS.	
S.A. 29.2 SQ.FT.	
GAL. 80 CU.FT.10.8 CRN: E7399.2C	W
CODE: ASME Section VIII, Div.1, LATEST EDITION	EXMT UG-20(f) CORR ALW 0 SH 0 HD
STD. TOLERANCES: M-2461 (UNLESS OTHERWISE NOTED)	WELD DETAILS: M-1932

**MANCHESTER TANK**

**HORIZONTAL AIR RECEIVER**

FILE LOCATION: O:\SolidWorks\3000\303977

DRAWN BY: \_\_\_\_\_ DATE: \_\_\_\_\_

APPR. BY: \_\_\_\_\_ DATE: \_\_\_\_\_

SCALE: NONE

DRWG NO. **303977**

REVISIONS			
REV.	DESCRIPTION	DATE	APP.
3	BS		BS
A	BC		BC