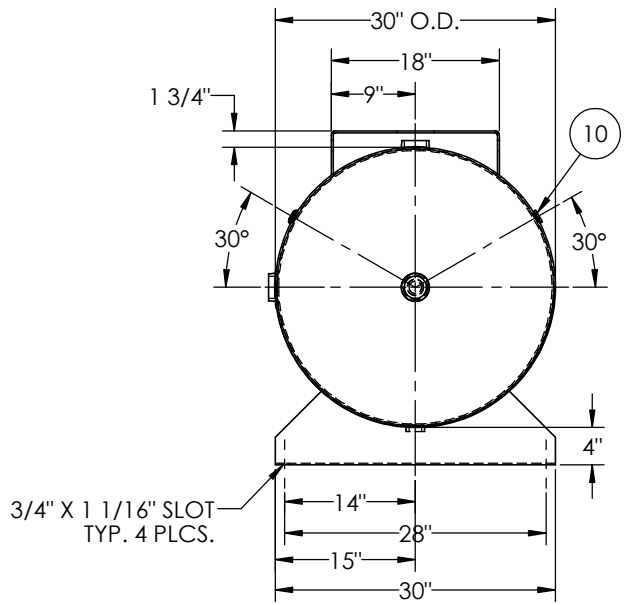
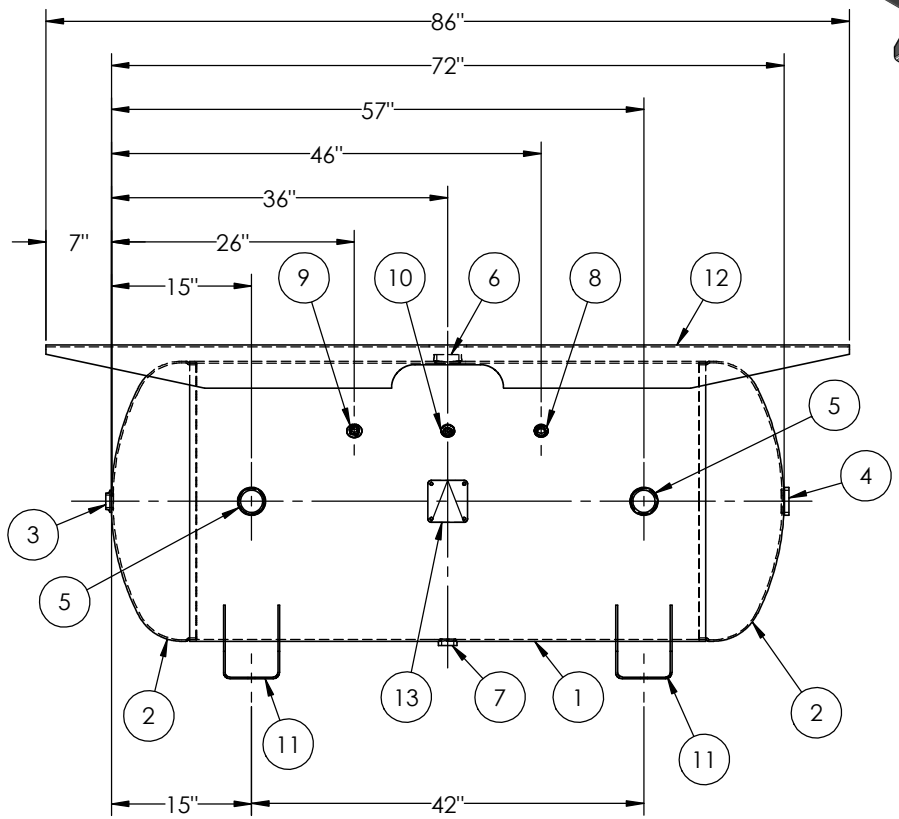


ITEM NO.	PART NO.	DESCRIPTION	QTY.
1	302701-SL	SHELL LAYOUT FOR 30" TANK	1
2	H32041	.186 MIN. 30" O.D. 2:1 ELLIP. JOG. HEAD	2
3	F10370	1"-NPT FLAT FLANGE	1
4	F30316	2"-NPT FLAT FLANGE O-RING	1
5	F30318	2"-NPT RADIAL FLANGE O-RING	2
6	F30318	2"-NPT RADIAL FLANGE O-RING	1
7	F30263	1"-NPT RADIAL FLANGE	1
8	F10250	1/2"-NPT FLAT FLANGE	1
9	F10300	3/8"-NPT FLAT FLANGE	1
10	F31826	1/4"-NPT FLAT FLANGE	2
11	A84452	7GA SADDLE	2
12	A99141	4GA TOPPLATE	1
13	A20910	ASME DATA PLATE	1



NOTES:

RELEASED FOR PRODUCTION  
 Q.C. \_\_\_\_\_ DATE \_\_\_\_\_

REV.		BY	DESCRIPTION	DATE	APP.
4		JR			AMA
5		BAK			AMA
A		KAT			JC
B		BAK			JC
C		DS			DS

SPECIFICATIONS

O.D. 30 LGTH. 72  
 WT. 684 LBS.  
 S.A. 50 SQ.FT.  
 GAL. 200 CU.FT.26.5 CRN: F0628.1C  
 CODE: ASME Section VIII, Div.1, LATEST EDITION  
 STD. TOLERANCES: M-2461 (UNLESS OTHERWISE NOTED)

MAWP 200 PSI @ 400°F  
 EXMT UG-20(f) CORR ALW 0 SH 0 HD  
 WELD DETAILS: M-1932



**HORIZONTAL AIR RECEIVER**

FILE LOCATION: O:\SolidWorks\3000\302701  
 DRAWN BY: \_\_\_\_\_ DATE: \_\_\_\_\_  
 APPR. BY: \_\_\_\_\_ DATE: \_\_\_\_\_  
 SCALE: NONE  
 DRWG NO. **302701**