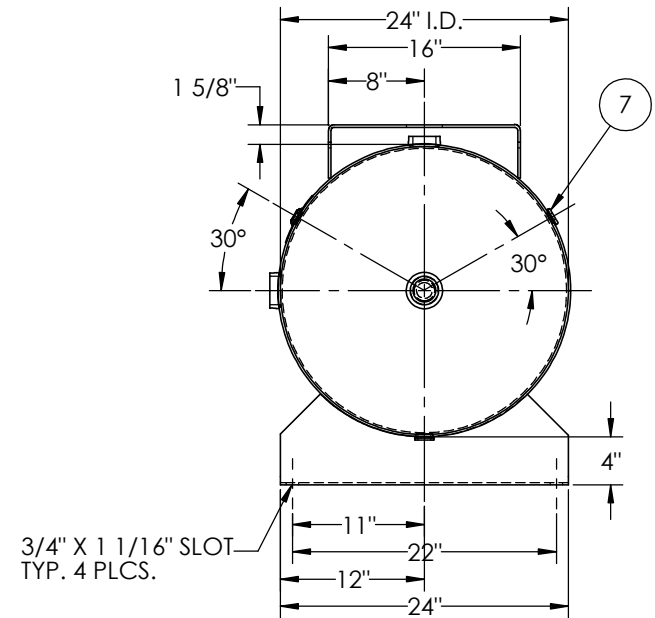
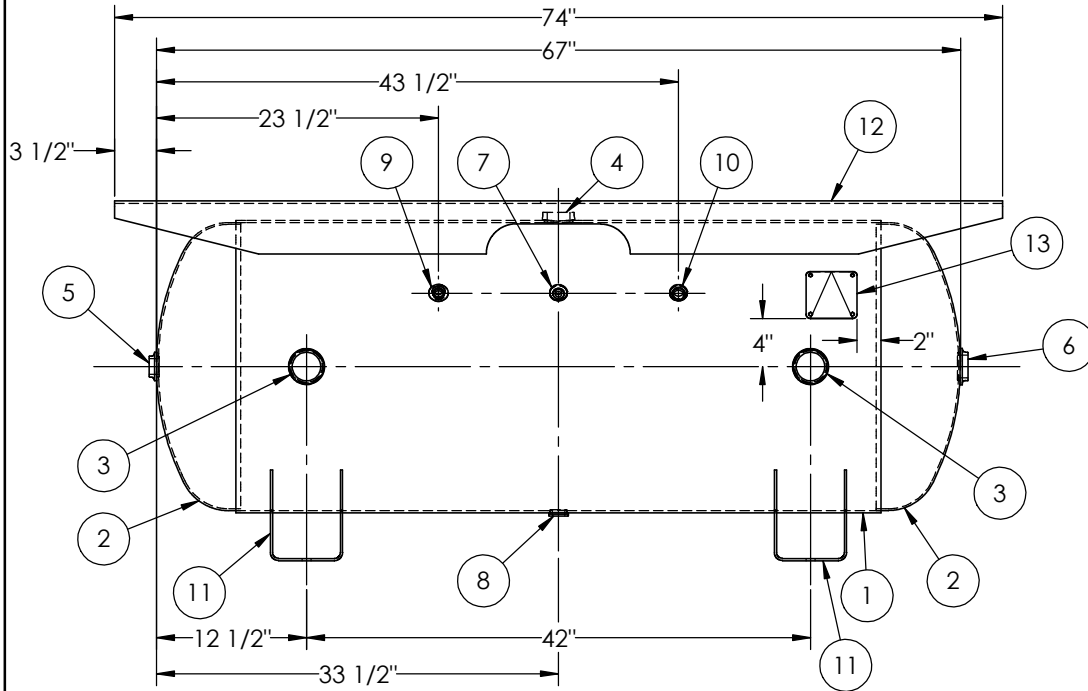


ITEM NO.	PART NO.	DESCRIPTION	QTY.
1	302700-SL	SHELL LAYOUT FOR 24" TANK	1
2	H32030	.149 MIN. 24" O.D. 2:1 ELLIP. PLAIN HEAD	2
3	F30318	2"-NPT RADIAL FLANGE O-RING	2
4	F30317	1 1/2"-NPT RADIAL FLANGE O-RING	1
5	F10370	1"-NPT FLAT FLANGE	1
6	F10350	1 1/2"-NPT FLAT FLANGE	1
7	F31826	1/4"-NPT FLAT FLANGE	2
8	F31840	3/4"-NPT FLAT FLANGE	1
9	F10300	3/8"-NPT FLAT FLANGE	1
10	F10250	1/2"-NPT FLAT FLANGE	1
11	A91912	7GA SADDLE	2
12	A84530.1	4GA TOPPLATE	1
13	A20910	ASME DATA PLATE	1



NOTES:

SPECIFICATIONS	
I.D. 24 LGTH. 67	MAWP 200 PSI @ 400°F
WT. 438 LBS.	
S.A. 37.5 SQ.FT.	
GAL. 120 CU.FT.16.4 CRN: E7400.2C	
CODE: ASME Section VIII, Div.1, LATEST EDITION	W
STD. TOLERANCES: M-2461 (UNLESS OTHERWISE NOTED)	EXMT UG-20(f) CORR ALW 0 SH 0 HD
	WELD DETAILS: M-1932

**MANCHESTER TANK**

**HORIZONTAL AIR RECEIVER**

RELEASED FOR PRODUCTION

Q.C. \_\_\_\_\_ DATE \_\_\_\_\_

REVISIONS			
REV.	BY	DESCRIPTION	DATE
3	JLF		
4	BS		
A	DS		
B	KG		

DRAWN BY:	FELTY	DATE:	
APP. BY:	JLR	DATE:	
SCALE:	NONE	DRWG NO.	<b>302700</b>

