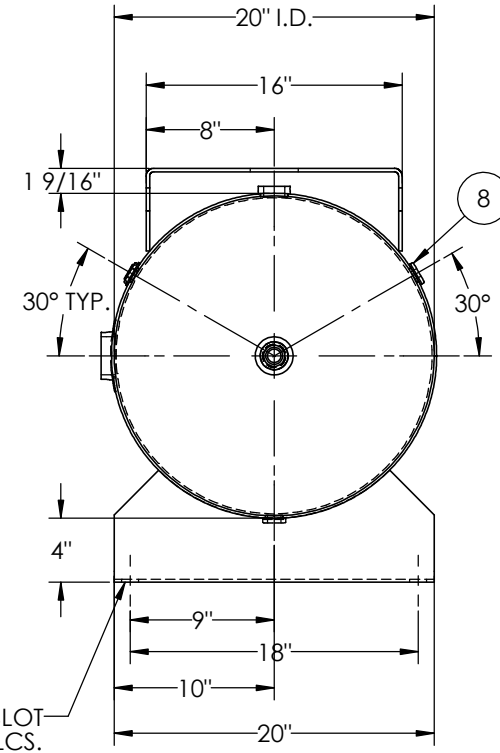
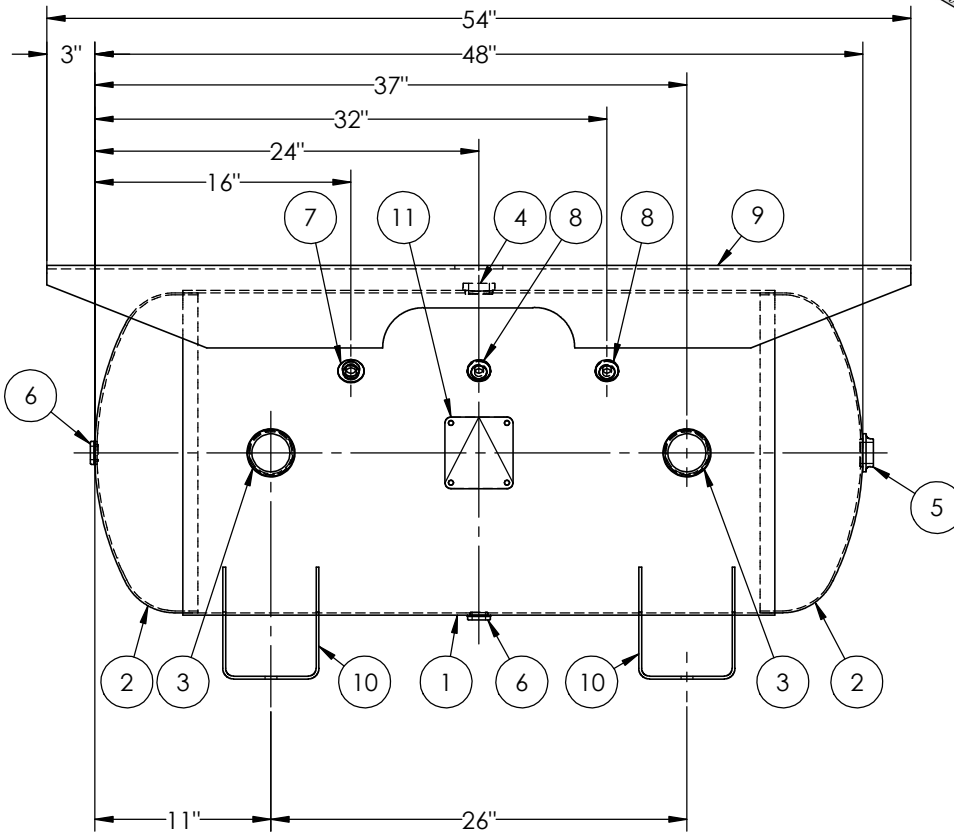


ITEM NO.	PART NO.	DESCRIPTION	QTY.
1	302693-SL	SHELL LAYOUT FOR 20" TANK	1
2	H32020	.124 MIN. 20" O.D. 2:1 ELLIP. PLAIN HEAD	2
3	F30318	2"-NPT RADIAL FLANGE O-RING	2
4	F30263	1"-NPT RADIAL FLANGE	1
5	F10370	1"-NPT FLAT FLANGE	1
6	F10250	1/2"-NPT FLAT FLANGE	2
7	F32303	3/8"-NPT FLAT FLANGE	1
8	F31826	1/4"-NPT FLAT FLANGE	3
9	A98355	TOPPLATE	1
10	A88124	SADDLE	2
11	A20910	ASME DATA PLATE	1



NOTES:

RELEASED FOR PRODUCTION  
Q.C. \_\_\_\_\_ DATE \_\_\_\_\_

SPECIFICATIONS	
I.D. 20 LGTH. 48	MAWP 200 PSI @ 400°F
WT. 266 LBS.	
S.A. 22.6 SQ.FT.	
GAL. 60 CU.FT.8	CRN: E7399.2C
CODE: ASME Section VIII, Div.1, LATEST EDITION	W
STD. TOLERANCES: M-2461 (UNLESS OTHERWISE NOTED)	EXMT UG-20(f) CORR ALW 0 SH 0 HD
	WELD DETAILS: M-1932

**MANCHESTER TANK**

**HORIZONTAL AIR RECEIVER**

FILE LOCATION: O:\SolidWorks\3000\302693

DRAWN BY: \_\_\_\_\_ DATE: \_\_\_\_\_

APPR. BY: \_\_\_\_\_ DATE: \_\_\_\_\_

SCALE: NONE

DRWG NO. **302693**

REVISIONS				
REV.	BY	DESCRIPTION	DATE	APP.
4	BS			BS
A	BC			BC
B	DS			DS

