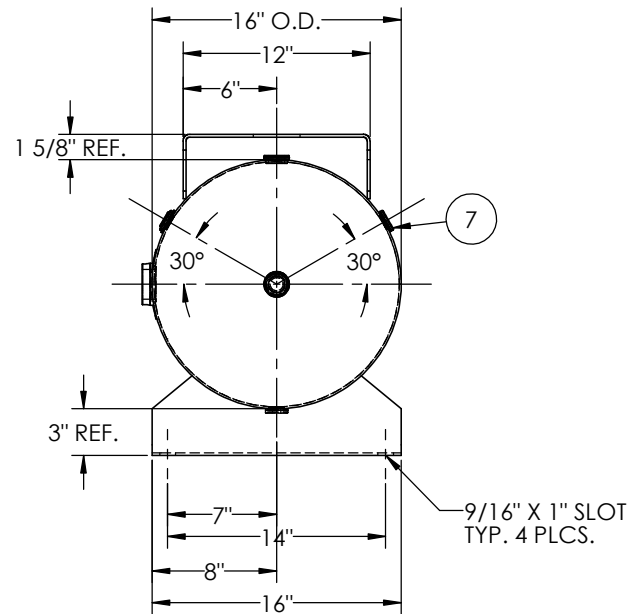
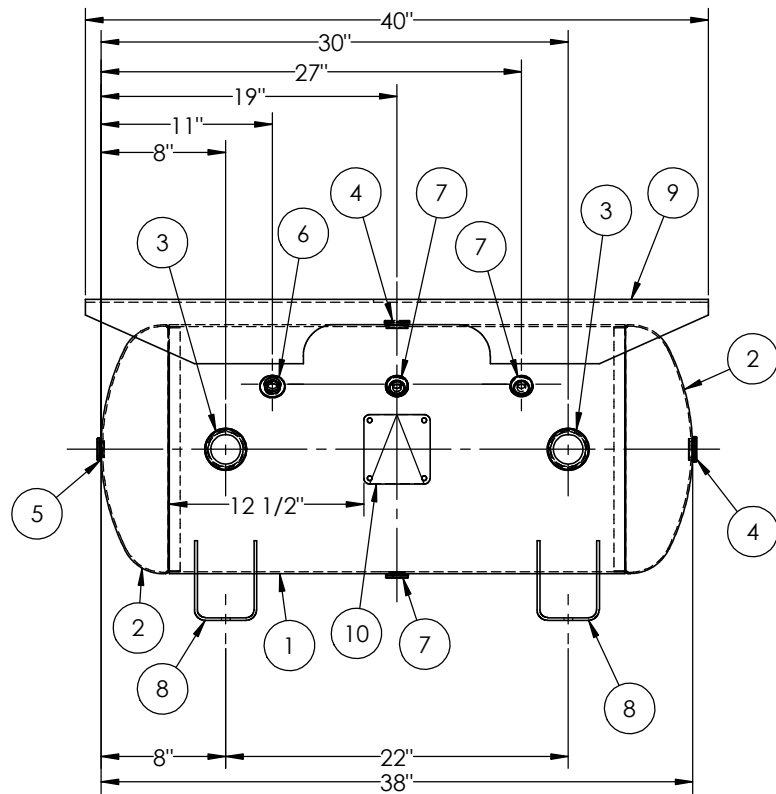


ITEM NO.	PART NO.	DESCRIPTION	QTY.
1	302686-SL	SHELL LAYOUT FOR 16" TANK	1
2	H32011	.099 MIN. 16" O.D. 2:1 ELLIP. JOG. HEAD	2
3	F30317	1 1/2"-NPT RADIAL FLANGE O-RING	2
4	F31840	3/4"-NPT FLAT FLANGE	2
5	F10250	1/2"-NPT FLAT FLANGE	1
6	F10300	3/8"-NPT FLAT FLANGE	1
7	F31826	1/4"-NPT FLAT FLANGE	4
8	A96095	SADDLE	2
9	A98354	TOPPLATE	1
10	A20910	ASME DATA PLATE	1



NOTES:

RELEASED FOR PRODUCTION
Q.C. _____ DATE _____

SPECIFICATIONS

O.D. 16 LGTH. 38
WT. 129 LBS.
S.A. 14.1 SQ.FT.
GAL. 30 CU.FT. 4 CRN: F2151.1C
CODE: ASME Section VIII, Div.1, LATEST EDITION
STD. TOLERANCES: M-2461 (UNLESS OTHERWISE NOTED)

MAWP 200 PSI @ 400°F

CORR ALW SH HD
WELD DETAILS: M-1932



**30 GALLON, HORIZONTAL
AIR RECEIVER**

DRAWN BY: _____ DATE: _____

APPR. BY: _____ DATE: _____

SCALE: NONE

DRWG NO. **302686**



ZONE	REV.	BY	DESCRIPTION	DATE	APP.
A	RC				DW