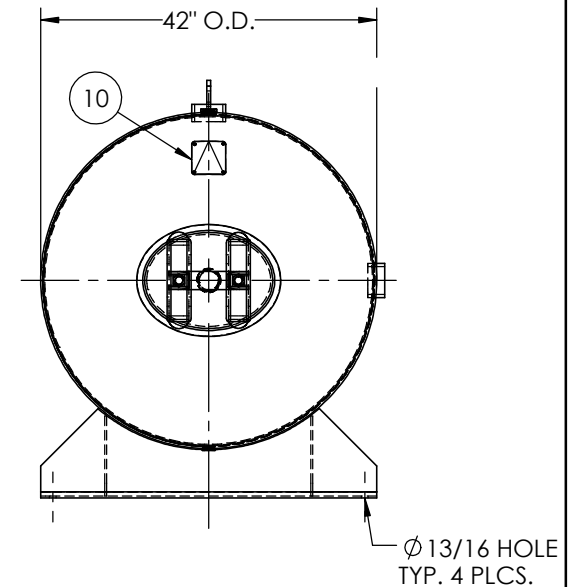
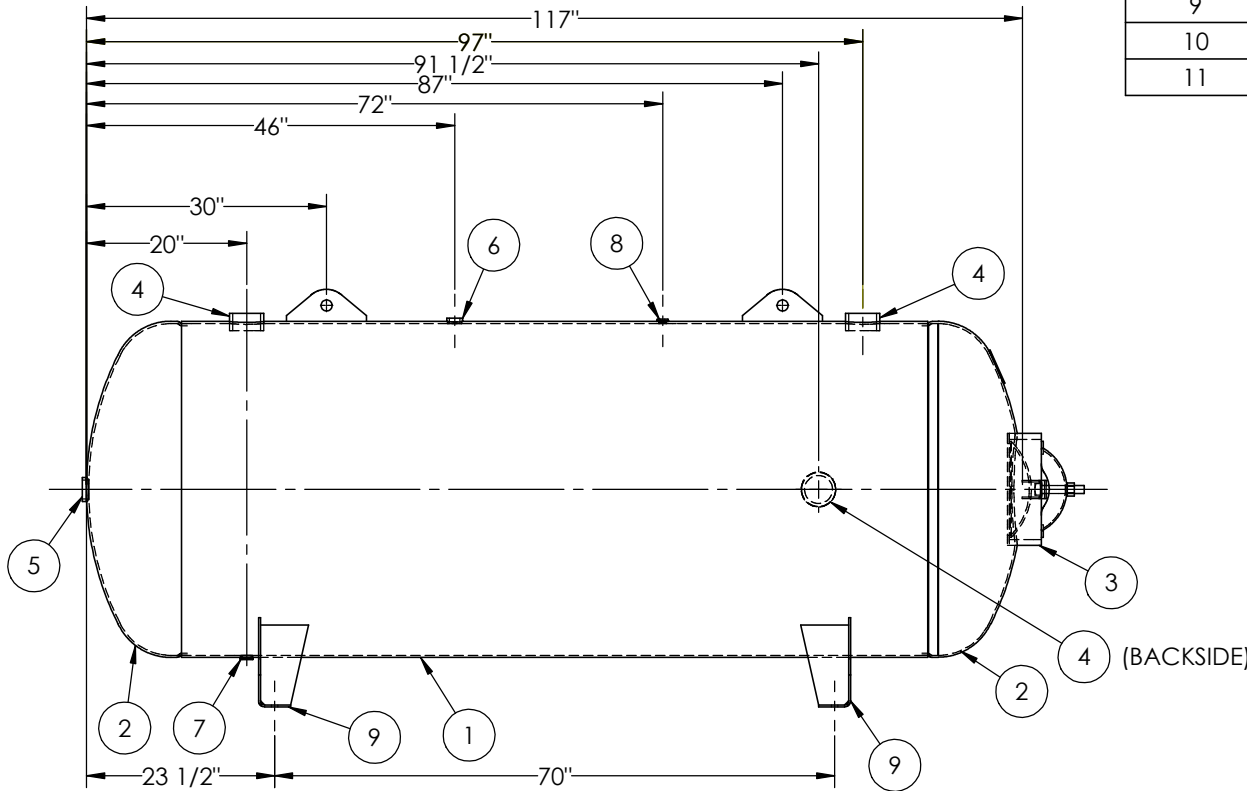


ITEM NO.	PART NO.	DESCRIPTION	QTY.
1	302491-SL	SHELL LAYOUT FOR 42" TANK	1
2	H44357	.250 MIN. 42" O.D. 2:1 ELLIP. JOG. HEAD	2
3	A72305	12" X 16" X 3/4" X 4" 300# MANWAY	1
4	F10400	3"-NPT HALF COUPLING	3
5	F30316	2"-NPT FLAT FLANGE O-RING	1
6	F30263	1"-NPT RADIAL FLANGE	1
7	F31840	3/4"-NPT FLAT FLANGE	1
8	F31826	1/4"-NPT FLAT FLANGE	1
9	A84539	SADDLE ASSEMBLY, 42"	2
10	A20910	ASME DATA PLATE	1
11	A84540	LIFT LUG	2



NOTES:  
1. 3NPT CPLG (4) STICKOUT = 1".

SPECIFICATIONS

O.D. 42 LGTH. 117  
WT. 1445 LBS.  
S.A.112.8 SQ.FT.  
GAL. 660 CU.FT.86 CRN: V6309.2C  
CODE: ASME Section VIII, Div.1, LATEST EDITION  
STD. TOLERANCES: M-2461 (UNLESS OTHERWISE NOTED)

MAWP 200 PSI @ 400°F  
W  
EXMT UG20(f) CORR ALW 0 SH 0 HD  
WELD DETAILS: M-1932



HORIZONTAL AIR RECEIVER

FILE LOCATION: O:\SolidWorks\3000\302491

DRAWN BY: DATE:

APPR. BY: DATE:

SCALE: NONE  
DRWG NO. 302491

RELEASED FOR PRODUCTION  
Q.C. \_\_\_\_\_ DATE \_\_\_\_\_

REVISIONS				
REV.	BY	DESCRIPTION	DATE	APP.
1	WDS			JC
A	JC			JC
B	KAT			JC
C	EASI			MK

