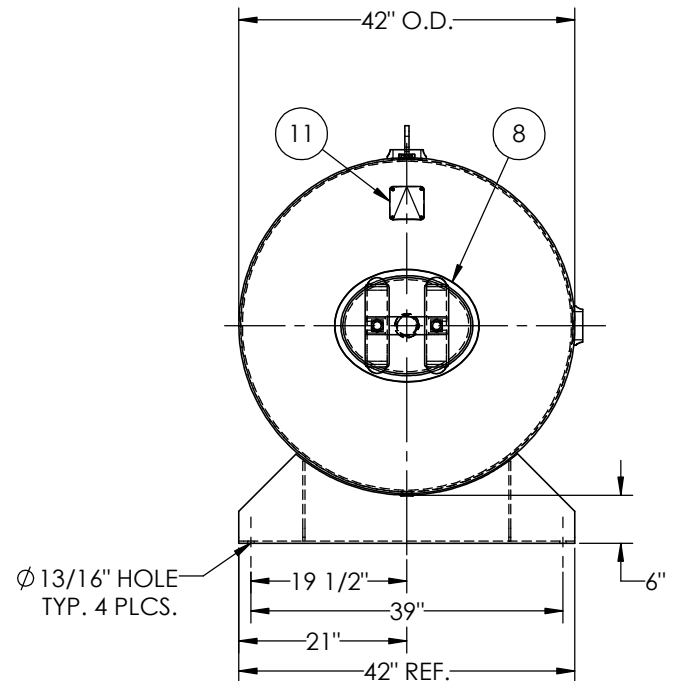
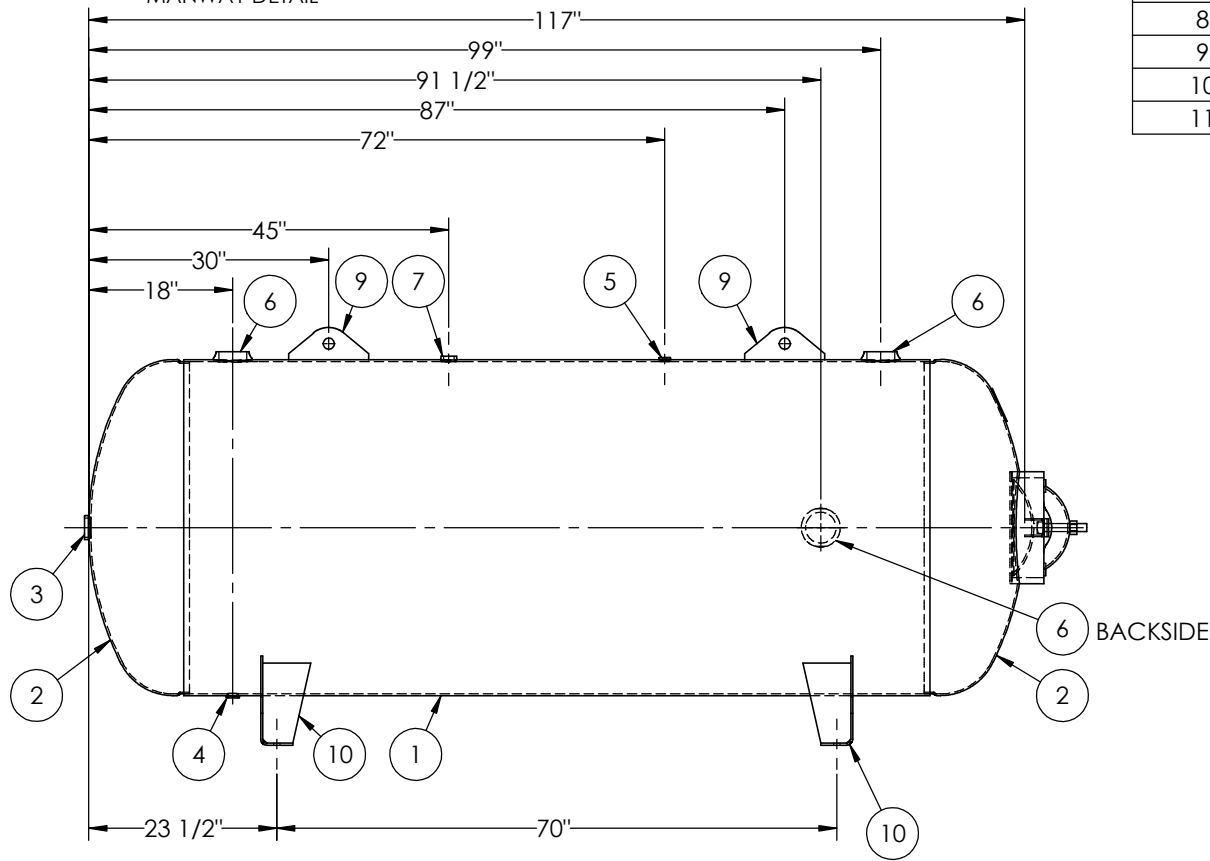


| ITEM NO. | PART NO. | DESCRIPTION | QTY. |
|----------|-----------|---|------|
| 1 | 302490-SL | SHELL LAYOUT FOR 42" TANK | 1 |
| 2 | H44813 | .209 MIN. 42" O.D. 2:1 ELLIP. JOG. HEAD | 2 |
| 3 | F30316 | 2"-NPT FLAT FLANGE O-RING | 1 |
| 4 | F31840 | 3/4"-NPT FLAT FLANGE | 1 |
| 5 | F31826 | 1/4"-NPT FLAT FLANGE | 1 |
| 6 | F25004 | 3"-NPT RADIAL FLANGE | 3 |
| 7 | F30263 | 1"-NPT RADIAL FLANGE | 1 |
| 8 | A72305 | 12" X 16" X 3/4" X 4" 300# MANWAY | 1 |
| 9 | A84540 | LIFT LUG | 2 |
| 10 | A84539 | SADDLE ASSEMBLY, 42" | 2 |
| 11 | A20910 | ASME DATA PLATE | 1 |



NOTES:
1. HEAD MIN IS PER MANWAY CALC.

SPECIFICATIONS

O.D. 42 LGTH. 117
 WT. 1383 LBS.
 S.A. 112.8 SQ.FT.
 GAL. 660 CU.FT.85.9 CRN: L8992.5C
 CODE: ASME Section VIII, Div.1, LATEST EDITION
 STD. TOLERANCES: M-2461 (UNLESS OTHERWISE NOTED)

MAWP 165 PSI @ 400°F

EXMT UG-20(f) CORR ALW 0 SH 0 HD
 WELD DETAILS: M-1932



HORIZONTAL AIR RECEIVER

RELEASED FOR PRODUCTION
 Q.C. _____ DATE _____

| REVISIONS | | DATE | APP. |
|-----------|------|-------------|------|
| REV. | BY | DESCRIPTION | |
| A | EASI | | DP |
| B | HD | | DS |

| | |
|--------------|-----------------|
| DRAWN BY: BS | DATE: |
| APPR. BY: JR | DATE: |
| SCALE: NONE | DRWG NO. 302490 |

