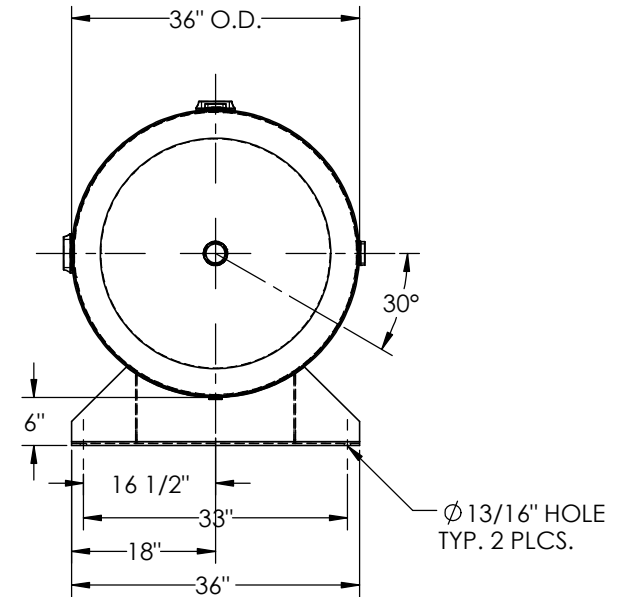
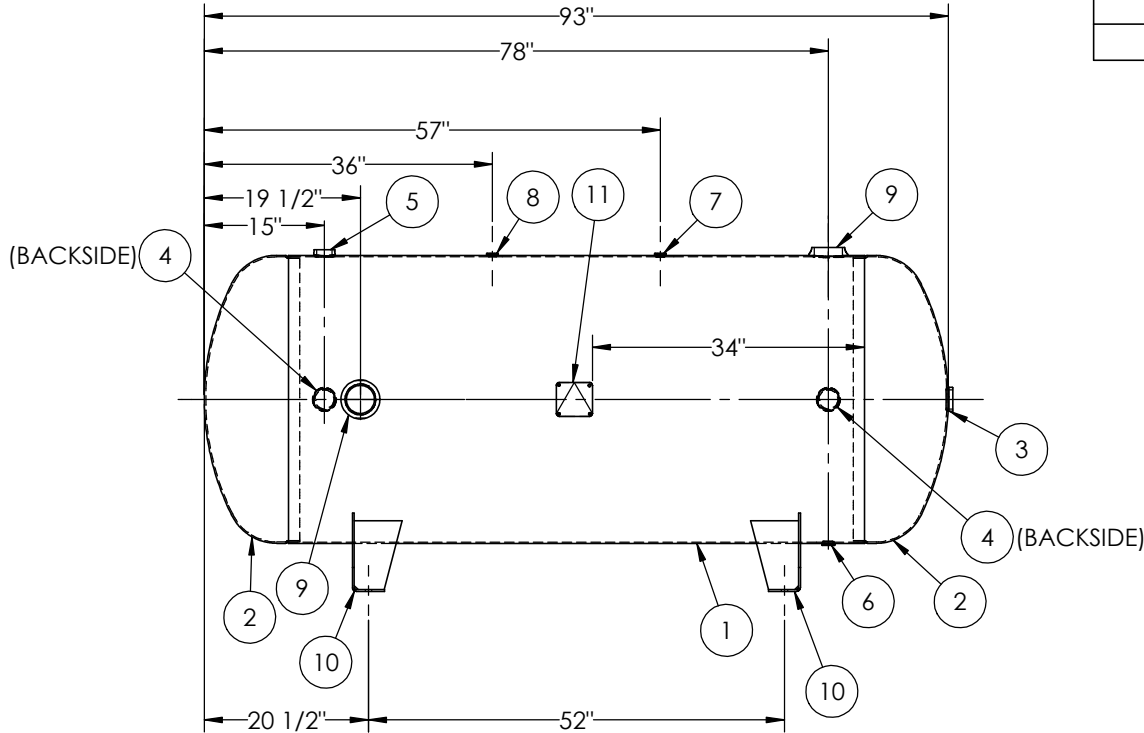


ITEM NO.	PART NO.	DESCRIPTION	QTY.
1	302487-SL	SHELL LAYOUT FOR 36" TANK	1
2	H44399	.176 MIN. 36" O.D. 2:1 ELLIP. JOG. HEAD	2
3	F30316	2"-NPT FLAT FLANGE O-RING	1
4	F30318	2"-NPT RADIAL FLANGE O-RING	2
5	F30317	1 1/2"-NPT RADIAL FLANGE O-RING	1
6	F31840	3/4"-NPT FLAT FLANGE	1
7	F10250	1/2"-NPT FLAT FLANGE	1
8	F31826	1/4"-NPT FLAT FLANGE	1
9	F25004	3"-NPT RADIAL FLANGE	2
10	A84493	L-BRACKET ASSEMBLY	2
11	A20910	ASME DATA PLATE	1



NOTES:

SPECIFICATIONS

O.D. 36 LGTH. 93 MAWP 165 PSI @ 400°F
 WT. 667 LBS.
 S.A. 77.1 SQ.FT.
 GAL. 400 CU.FT.50.2 CRN: L8907.5C
 CODE: ASME Section VIII, Div.1, LATEST EDITION
 STD. TOLERANCES: M-2461 (UNLESS OTHERWISE NOTED)

EXMT UG-20(f) CORR ALW 0 SH 0 HD
 WELD DETAILS: M-1932



HORIZONTAL AIR RECEIVER

FILE LOCATION: O:\SolidWorks\3000\302487

DRAWN BY: B. SKINNER DATE:

APPR. BY: J. REED DATE:

SCALE: NONE DRWG NO. 302487

REVISIONS				
REV.	BY	DESCRIPTION	DATE	APP.
A	EGB			EGB
B	EK			EK
C	EK			JC
D	EASI			MK

RELEASED FOR PRODUCTION
 Q.C. _____ DATE _____

