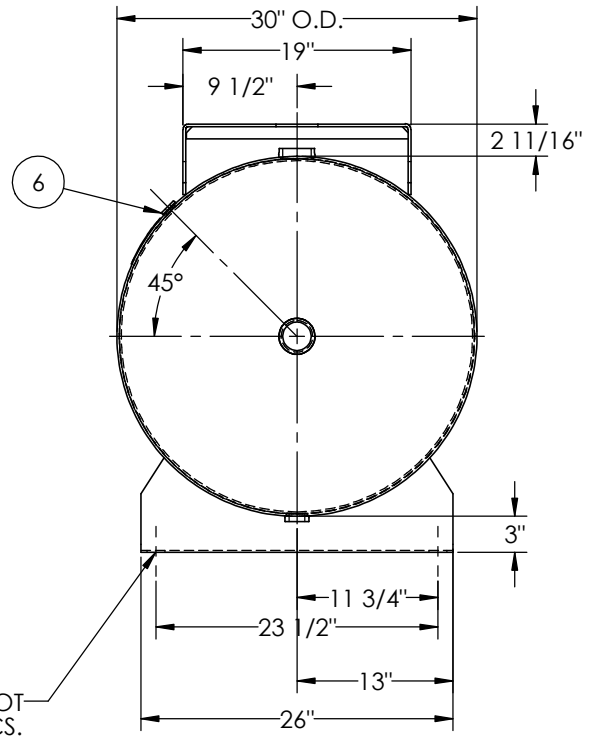
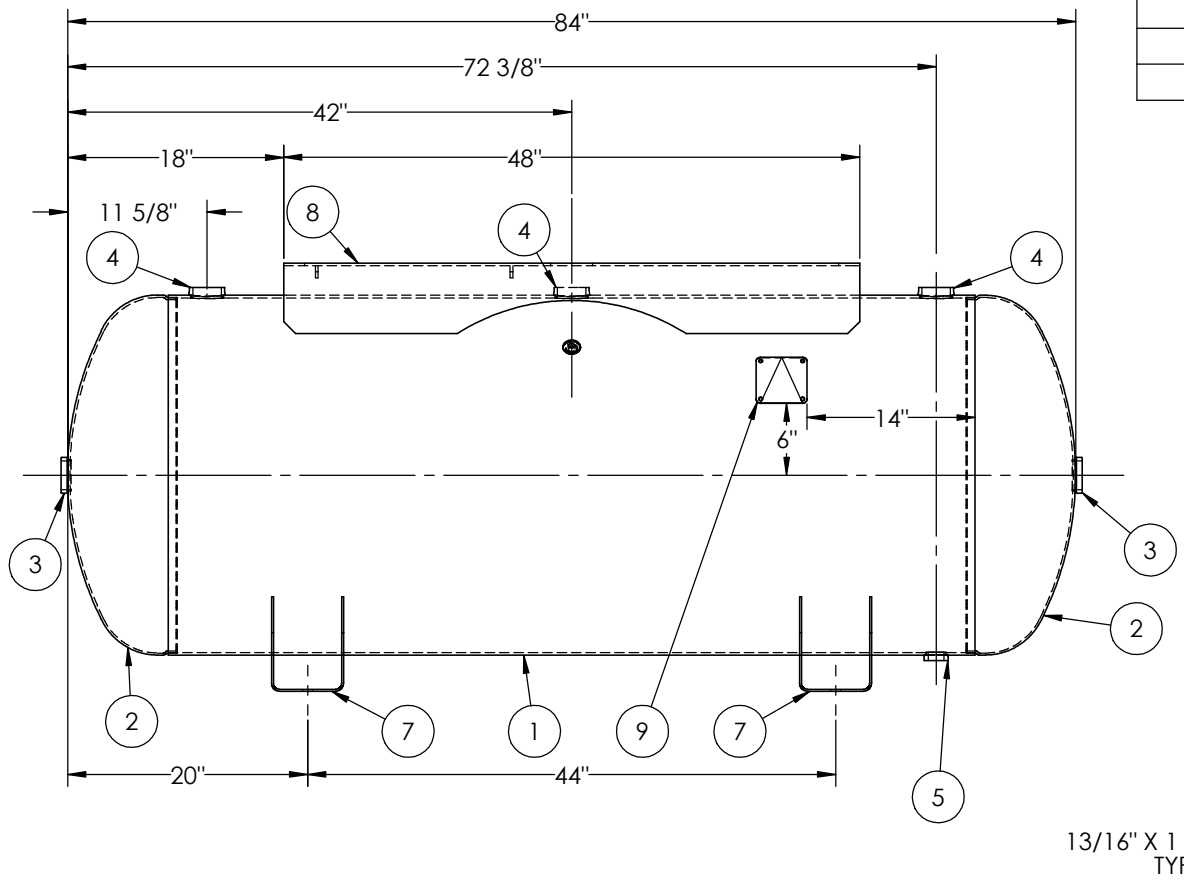


ITEM NO.	PART NO.	DESCRIPTION	QTY.
1	302485-SL	SHELL LAYOUT FOR 30" TANK	1
2	H32041	.186 MIN. 30" O.D. 2:1 ELLIP. JOG. HEAD	2
3	F30316	2"-NPT FLAT FLANGE O-RING	2
4	F30318	2"-NPT RADIAL FLANGE O-RING	3
5	F30263	1"-NPT RADIAL FLANGE	1
6	F31826	1/4"-NPT FLAT FLANGE	1
7	A55848.2	7GA SADDLE	2
8	A55839	TOPPLATE ASY.	1
9	A20910	ASME DATA PLATE	1



NOTES:

RELEASED FOR PRODUCTION
Q.C. _____ DATE _____

REV.		BY	DATE	APP.
A	EGB			
B	KAT			
C	RC			

REVISIONS		DATE	APP.

SPECIFICATIONS

O.D. 30 LGTH. 84
WT. 689 LBS.
S.A. 57.8 SQ.FT.
GAL. 240 CU.FT.31.3 CRN: F0628.1C
CODE: ASME Section VIII, Div.1, LATEST EDITION
STD. TOLERANCES: M-2461 (UNLESS OTHERWISE NOTED)

MAWP 200 PSI @ 400°F
W
EXMT UG-20(f) CORR ALW 0 SH 0 HD
WELD DETAILS: M-1932



HORIZONTAL AIR RECEIVER

FILE LOCATION: O:\SolidWorks\3000\302485

DRAWN BY: _____ DATE: _____

APPR. BY: _____ DATE: _____

SCALE: NONE DRWG NO. **302485**