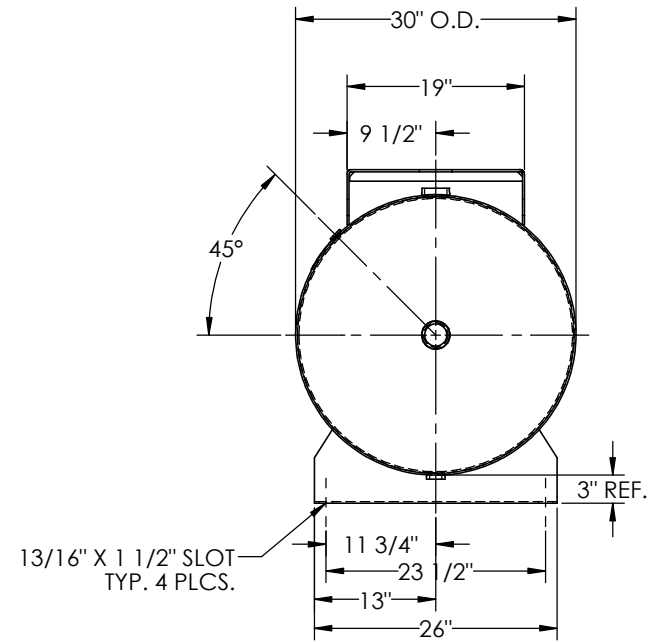
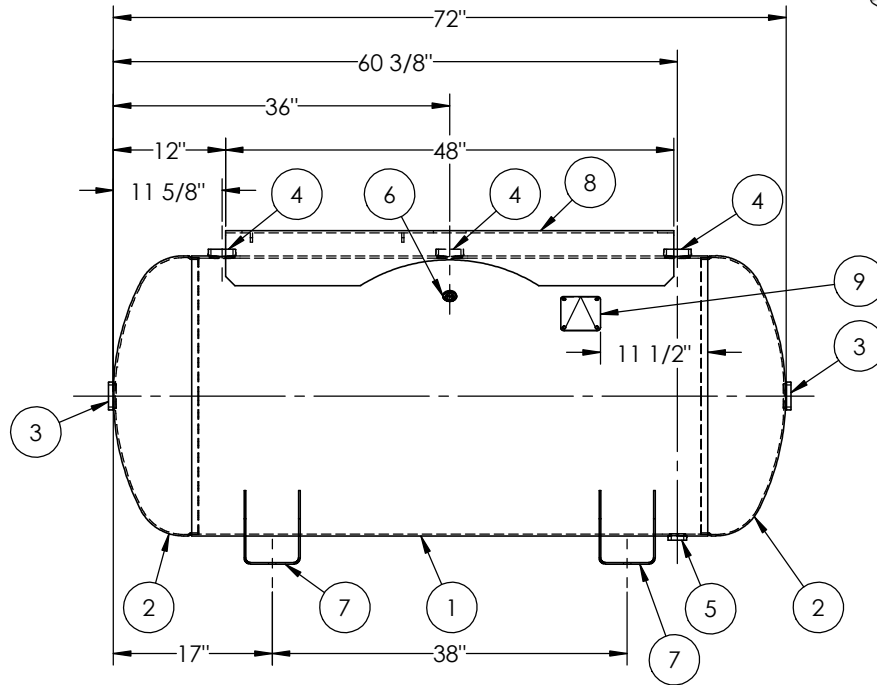


ITEM NO.	PART NO.	DESCRIPTION	QTY.
1	302483-SL	SHELL LAYOUT FOR 30" TANK	1
2	H32041	.186 MIN. 30" O.D. 2:1 ELLIP. JOG. HEAD	2
3	F30316	2"-NPT FLAT FLANGE O-RING	2
4	F30318	2"-NPT RADIAL FLANGE O-RING	3
5	F30263	1"-NPT RADIAL FLANGE	1
6	F31826	1/4"-NPT FLAT FLANGE	1
7	A55848.2	7GA SADDLE	2
8	A55839	TOPPLATE ASY.	1
9	A20910	ASME DATA PLATE	1



NOTES:

RELEASED FOR PRODUCTION
Q.C. _____ DATE _____



SPECIFICATIONS

O.D. 30 LGTH. 72
WT. 613 LBS.
S.A. 50 SQ.FT.
GAL. 200 CU.FT.26.5 CRN: F0628.1C
CODE: ASME Section VIII, Div.1, LATEST EDITION
STD. TOLERANCES: M-2461 (UNLESS OTHERWISE NOTED)

MAWP 200 PSI @ 400°F

EXMT UG-20(f) CORR ALW 0 SH 0 HD
WELD DETAILS: M-1932



HORIZONTAL AIR RECEIVER

FILE LOCATION: O:\SolidWorks\3000\302483

DRAWN BY: EGB DATE:

APPR. BY: JR DATE:

SCALE: NONE
DRWG NO. **302483**

REVISIONS			
REV.	BY	DESCRIPTION	DATE
A	BAK		JC
B	DS		DS