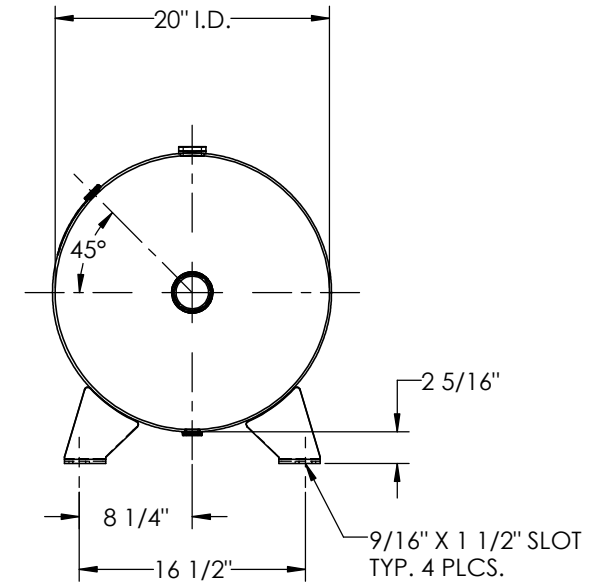
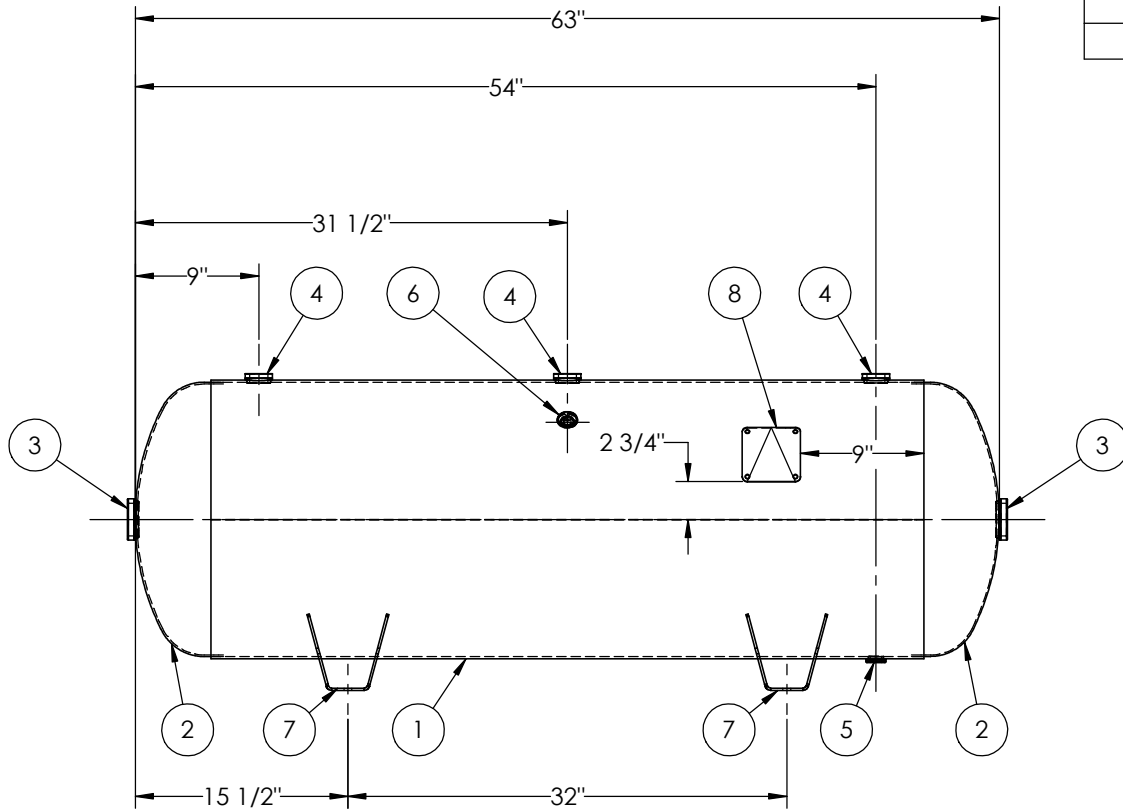


ITEM NO.	PART NO.	DESCRIPTION	QTY.
1	A302476-SL	SHELL LAYOUT FOR 20" I.D. TANK	1
2	H32020	.124 MIN. 20" O.D. 2:1 ELLIP. PLAIN HEAD	2
3	F30316	2"-NPT FLAT FLANGE O-RING	2
4	F30263	1"-NPT RADIAL FLANGE	3
5	F10250	1/2"-NPT FLAT FLANGE	1
6	F31826	1/4"-NPT FLAT FLANGE	1
7	A55178	STD. WING FOOT FOR 20" DIA.	4
8	A20910	ASME DATA PLATE	1



NOTES:

RELEASED FOR PRODUCTION
Q.C. _____ DATE _____



SPECIFICATIONS

I.D. 20 LGTH. 63
 WT. 200 LBS.
 S.A. 29.2 SQ.FT.
 GAL. 80 CU.FT.10.8 CRN: E7399.2C
 CODE: ASME Section VIII, Div.1, LATEST EDITION
 STD. TOLERANCES: M-2461 (UNLESS OTHERWISE NOTED)

MAWP 200 PSI @ 400°F

EXMT UG20(f) CORR ALW 0 SH 0 HD
 WELD DETAILS: M-1932



HORIZONTAL AIR RECEIVER

REVISIONS				
REV.	BY	DESCRIPTION	DATE	APP.
A	CM			DP
B	MK			DW
C	KG			BC
D	UG			MK

DRAWN BY:	EGB	DATE:	
APPR. BY:	EGB	DATE:	
SCALE:	NONE	DRWG NO.	302476