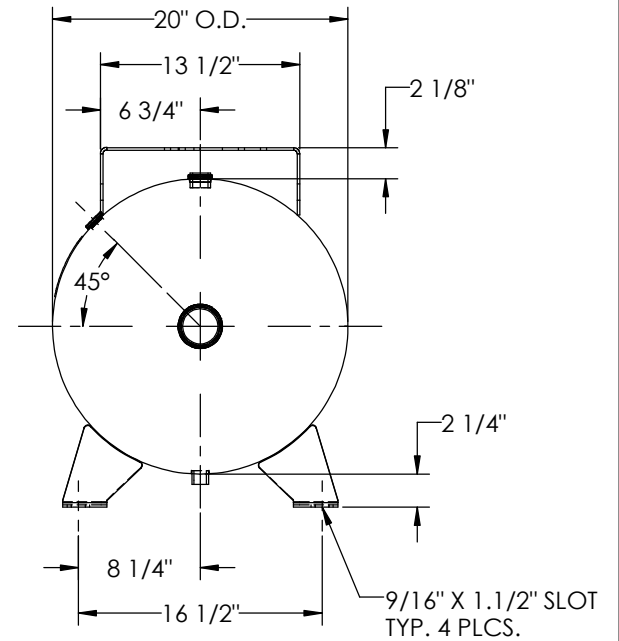
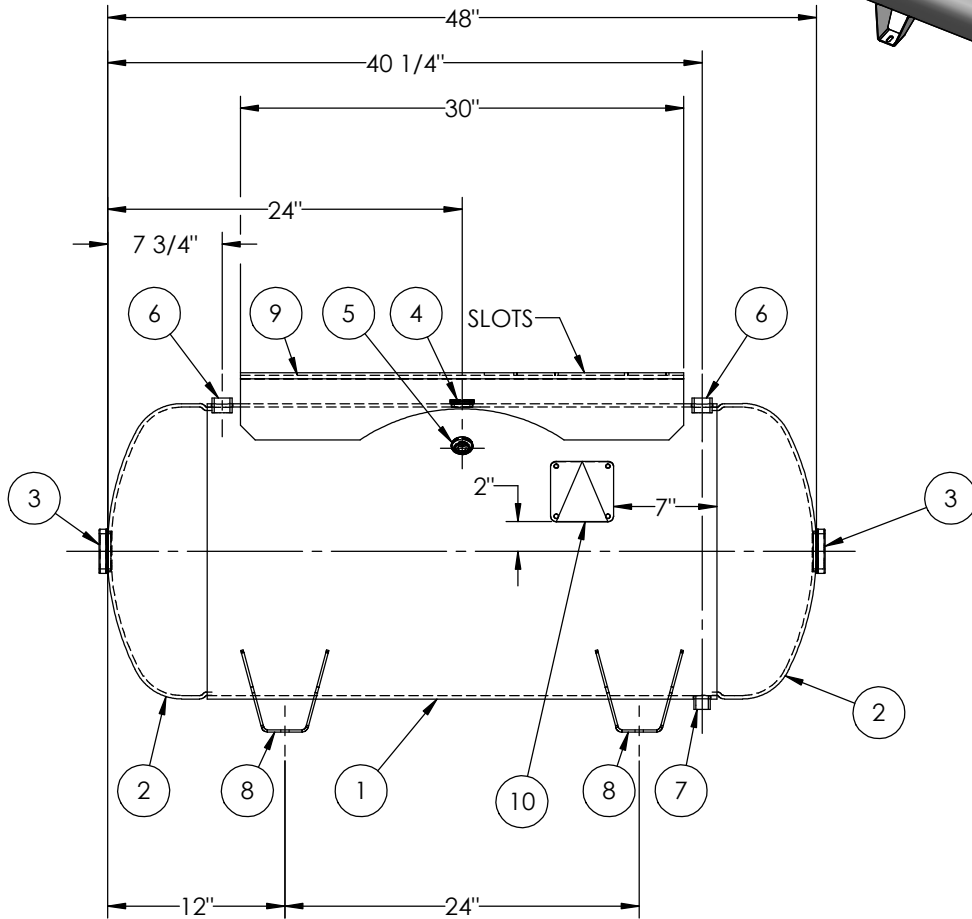


ITEM NO.	PART NO.	DESCRIPTION	QTY.
1	A302475-SL	SHELL LAYOUT FOR 20" O.D. TANK	1
2	H40541	.235 MIN. 20" O.D. 2:1 ELLIP. JOG. HEAD	2
3	F30316	2"-NPT FLAT FLANGE O-RING	2
4	F31840	3/4"-NPT FLAT FLANGE	1
5	F31826	1/4"-NPT FLAT FLANGE	1
6	F10170	3/4"-NPT HALF COUPLING	2
7	F10260	1/2"-NPT HALF COUPLING	1
8	A55178	STD. WING FOOT FOR 20" DIA.	4
9	A55916	7GA TOPPLATE	1
10	A20910	ASME DATA PLATE	1



NOTES:
1. DRAIN (7) TO BE FLUSH TO INSIDE OF BOTTOM SHELL.

SPECIFICATIONS	
O.D. 20 LGTH. 48	MAWP 300 PSI @ 400°F
WT. 270 LBS.	
S.A. 22.2 SQ.FT.	
GAL. 60 CU.FT.7.7 CRN: F1164.1C	
CODE: ASME Section VIII, Div.1, LATEST EDITION	W
STD. TOLERANCES: M-2461 (UNLESS OTHERWISE NOTED)	EXMT UG20(f) CORR ALW 0 SH 0 HD
	WELD DETAILS: M-1932



HORIZONTAL AIR RECEIVER

REVISIONS			
REV.	BY	DESCRIPTION	DATE
A	EGB		
B	EGB		
C	JC		
D	JC		
E	MK		
F	MK		
G	UG		

DRAWN BY:	EGB	DATE:	
APPR. BY:	MR	DATE:	
SCALE:	NONE	DRWG NO.	302475

RELEASED FOR PRODUCTION
Q.C. _____ DATE _____

