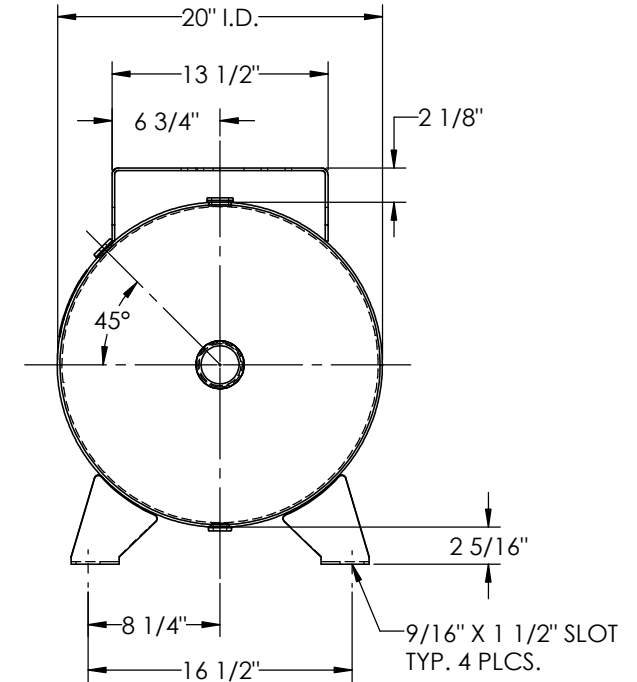
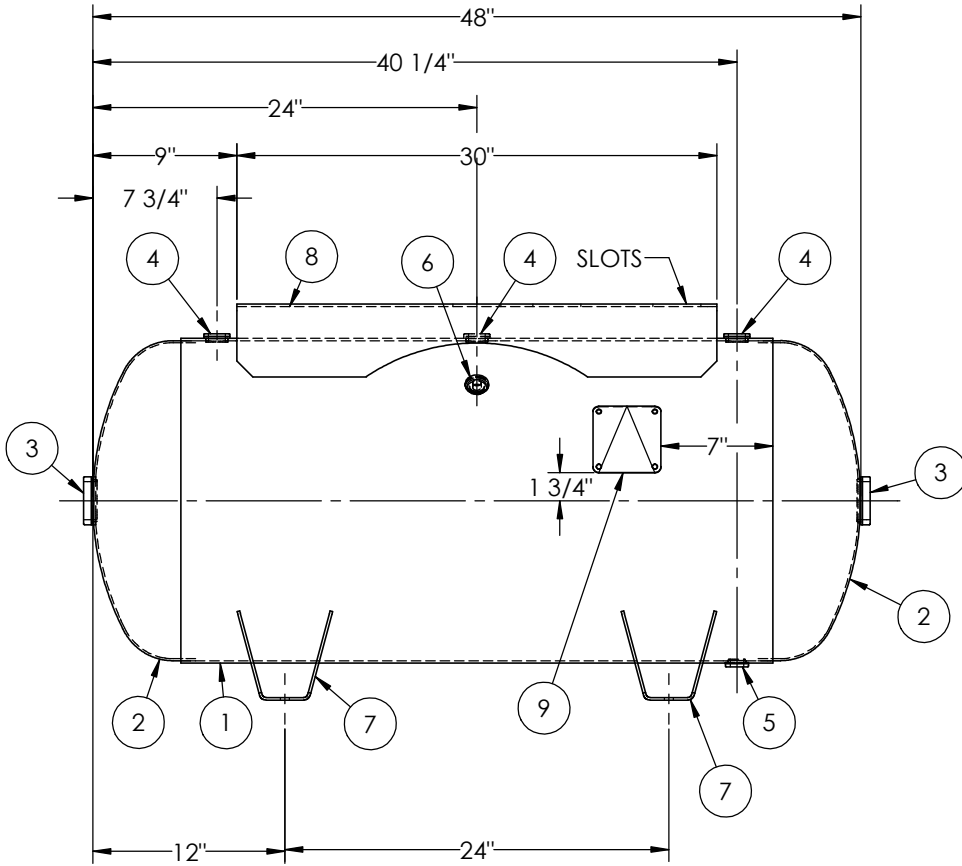


ITEM NO.	PART NO.	DESCRIPTION	QTY.
1	A302474-SL	SHELL LAYOUT FOR 20" I.D. TANK	1
2	H32020	.124 MIN. 20" O.D. 2:1 ELLIP. PLAIN HEAD	2
3	F30316	2"-NPT FLAT FLANGE O-RING	2
4	F31840	3/4"-NPT FLAT FLANGE	3
5	F10250	1/2"-NPT FLAT FLANGE	1
6	F31826	1/4"-NPT FLAT FLANGE	1
7	A55178	STD. WING FOOT FOR 20" DIA.	4
8	A55916	7GA TOPPLATE	1
9	A20910	ASME DATA PLATE	1



NOTES:

RELEASED FOR PRODUCTION
 Q.C. _____ DATE _____

SPECIFICATIONS	
I.D. 20 LGTH. 48	MAWP 200 PSI @ 400°F
WT. 186 LBS.	
S.A. 22.6 SQ.FT.	
GAL. 60 CU.FT.8.0 CRN: E7399.2C	
CODE: ASME Section VIII, Div.1, LATEST EDITION	W
STD. TOLERANCES: M-2461 (UNLESS OTHERWISE NOTED)	EXMT UG20(f) CORR ALW 0 SH 0 HD
	WELD DETAILS: M-1932

MANCHESTER TANK

HORIZONTAL AIR RECEIVER

REVISIONS				
REV.	BY	DESCRIPTION	DATE	APP.
A	CM			DP
B	KG			DS
C	RK			MK

DRAWN BY: EGB	DATE:
APPR. BY: EGB	DATE:
SCALE: NONE	DRWG NO. 302474

