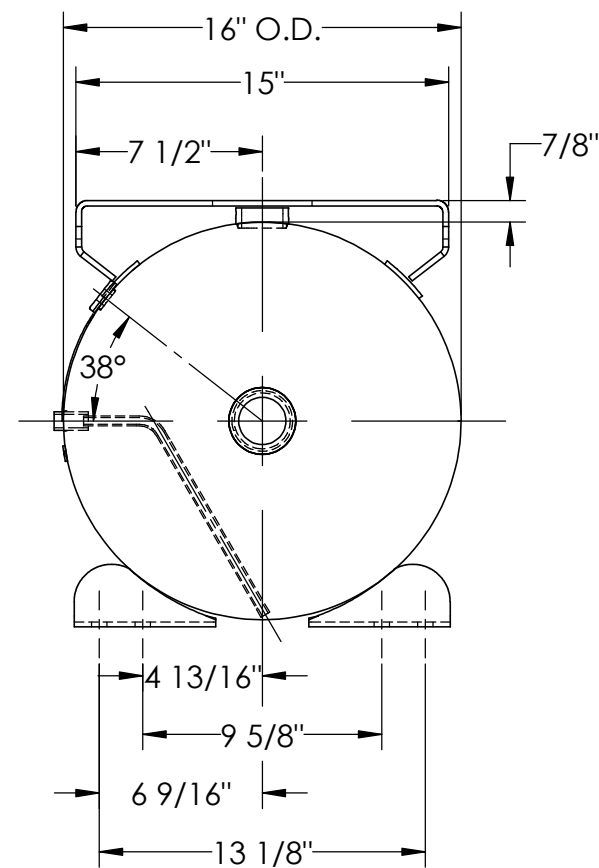
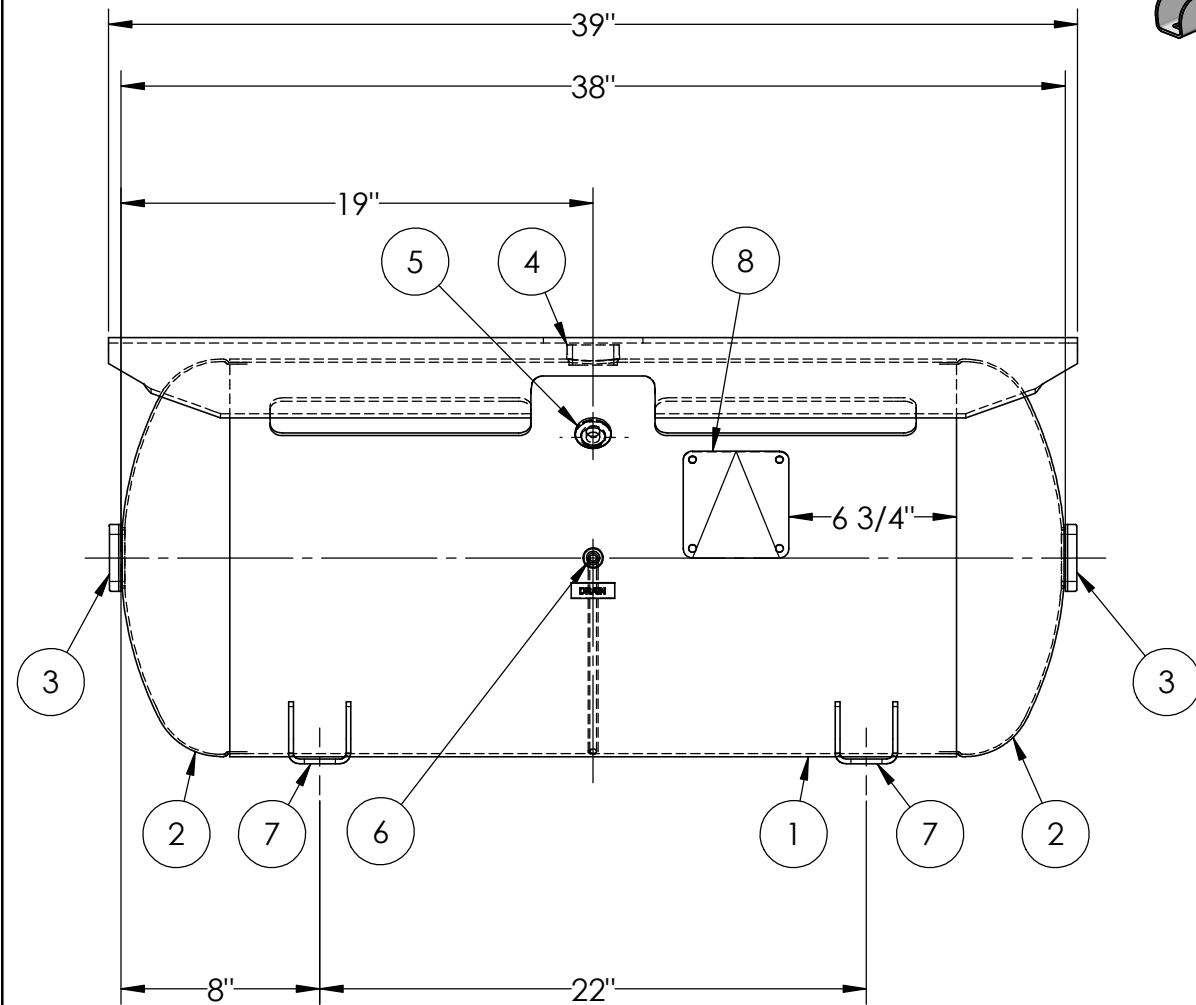


ITEM NO.	PART NO.	DESCRIPTION	QTY.
1	A302472-SL	SHELL LAYOUT FOR 16" O.D. TANK	1
2	H32011	.099 MIN. 16" O.D. 2:1 ELLIP. JOG. HEAD	2
3	F30315	1 1/2"-NPT FLAT FLANGE O-RING	2
4	F12520	1 1/4"-NPT RADIAL FLANGE	1
5	F31826	1/4"-NPT FLAT FLANGE	1
6	A50193	PIPE ASY LIQ SERV 1/4	1
7	A51178	TEARDROP FOOT BRKT	4
8	A20910	ASME DATA PLATE	1
9	A71757	PAD	4
10	A50198	DRAIN TAB	1
11	A50196	TOPPLATE	1



NOTES:

RELEASED FOR PRODUCTION  
Q.C. \_\_\_\_\_ DATE \_\_\_\_\_



SPECIFICATIONS

O.D. 16 LGTH. 38  
WT. 137 LBS.  
S.A. 14.1 SQ.FT.  
GAL. 30 CU.FT.4.0 CRN: F2151.1C  
CODE: ASME Section VIII, Div.1, LATEST EDITION  
STD. TOLERANCES: M-2461 (UNLESS OTHERWISE NOTED)

MAWP 200 PSI @ 400°F

EXMT UG20(f) CORR ALW 0 SH 0 HD  
WELD DETAILS: M-1932

REVISIONS

REV.	BY	DESCRIPTION	DATE	APP.
A	EGB			MR
B	MK			MK
C	BC			BC
D	UG			MK



**HORIZONTAL AIR RECEIVER**

DRAWN BY:	LB	DATE:
APPR. BY:	AS	DATE:
SCALE:	NONE	DRWG NO. <b>302472</b>