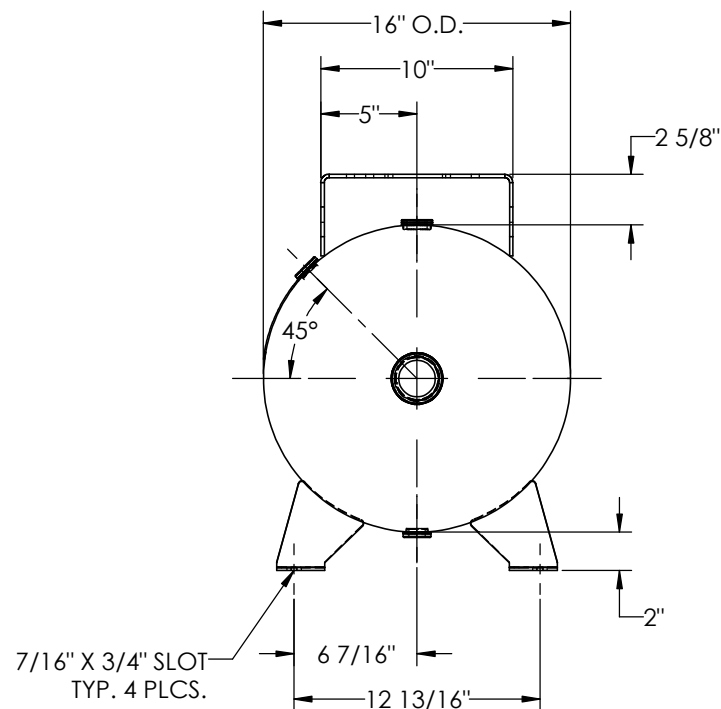
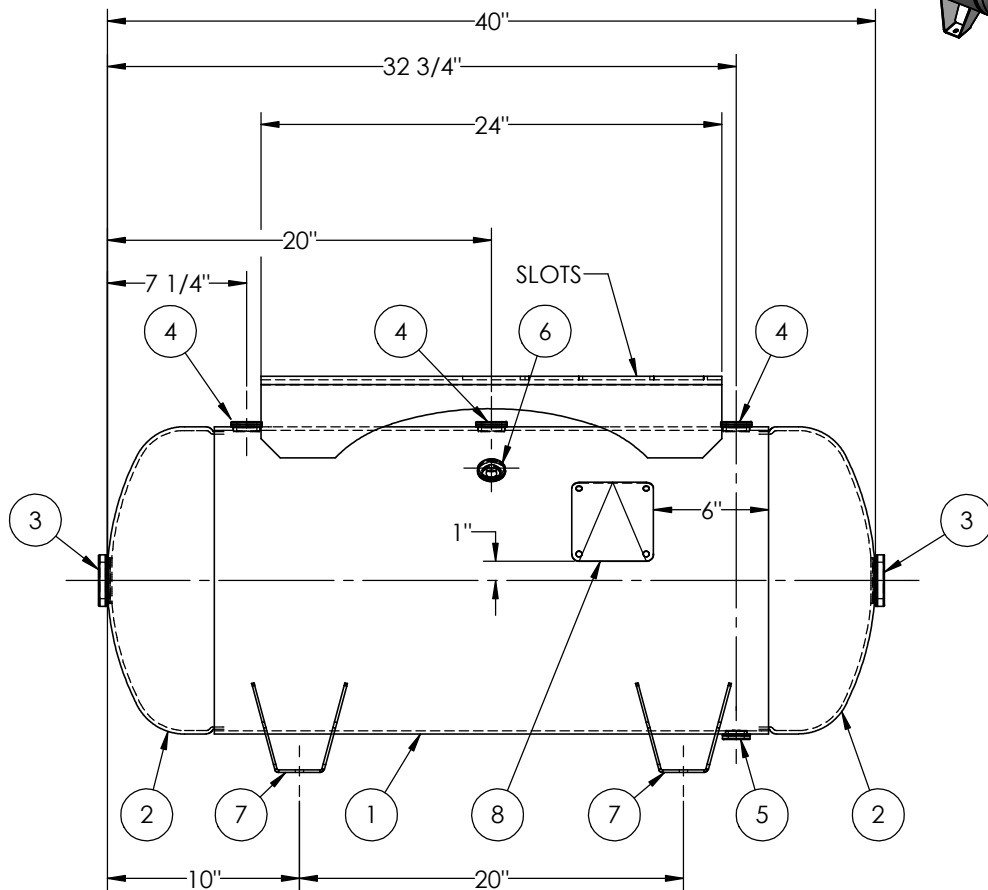


ITEM NO.	PART NO.	DESCRIPTION	QTY.
1	A302471-SL	SHELL LAYOUT FOR 16" O.D. TANK	1
2	H44376	.167 MIN. 16" O.D. 2:1 ELLIP. JOG. HEAD	2
3	F30315	1 1/2"-NPT FLAT FLANGE O-RING	2
4	F31840	3/4"-NPT FLAT FLANGE	3
5	F10250	1/2"-NPT FLAT FLANGE	1
6	F31826	1/4"-NPT FLAT FLANGE	1
7	A55819	FOOT WING FOR 16" TANK	4
8	A20910	ASME DATA PLATE	1
9	A55175	7GA TOPPLATE	1



NOTES:

RELEASED FOR PRODUCTION
Q.C. _____ DATE _____



SPECIFICATIONS

O.D. 16 LGTH. 40
WT. 136 LBS.
S.A. 14.8 SQ.FT.
GAL. 30 CU.FT.4.1 CRN: H5007.51234567890
CODE: ASME Section VIII, Div.1, LATEST EDITION
STD. TOLERANCES: M-2461 (UNLESS OTHERWISE NOTED)

MAWP 300 PSI @ 400°F

EXMT UG20(f) CORR ALW 0 SH 0 HD
WELD DETAILS: M-1932



HORIZONTAL AIR RECEIVER

REVISIONS			
REV.	BY	DESCRIPTION	DATE
A	EGB		
B	CDH		
C	AW		
D	JC		
E	MK		
F	UG		

DRAWN BY:	EGB	DATE:	
APPR. BY:	MR	DATE:	
SCALE:	NONE	DRWG NO.	302471