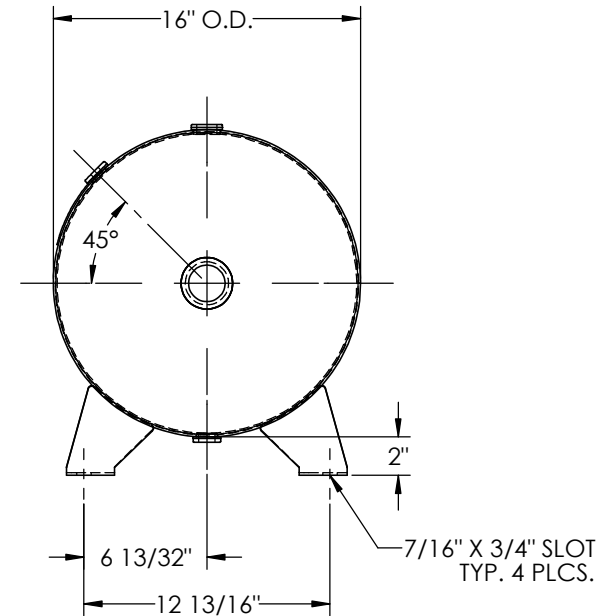
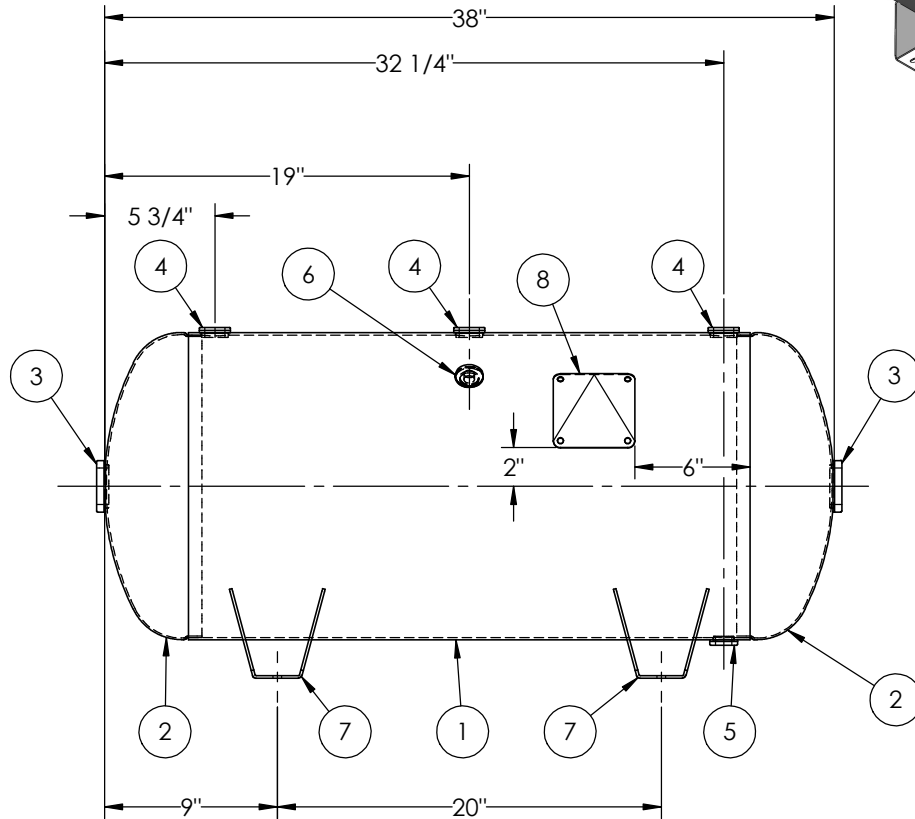
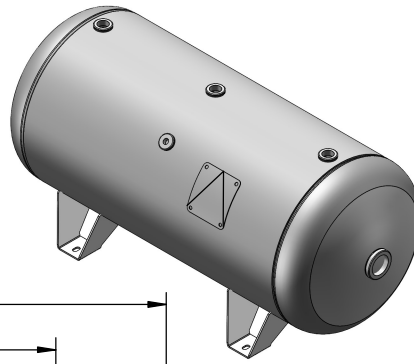


ITEM NO.	PART NO.	DESCRIPTION	QTY.
1	302469-SL	SHELL LAYOUT FOR 16" TANK	1
2	H32011	.099 MIN. 16" O.D. 2:1 ELLIP. JOG. HEAD	2
3	F30315	1 1/2"-NPT FLAT FLANGE O-RING	2
4	F31840	3/4"-NPT FLAT FLANGE	3
5	F10250	1/2"-NPT FLAT FLANGE	1
6	F31826	1/4"-NPT FLAT FLANGE	1
7	A55819	FOOT WING FOR 16" TANK	4
8	A20910	ASME DATA PLATE	1



NOTES:

SPECIFICATIONS

O.D. 16 LGTH. 38
 WT. 86 LBS.
 S.A. 14.1 SQ.FT.
 GAL. 30 CU.FT.4.0 CRN: F2151.1C
 CODE: ASME Section VIII, Div.1 LATEST EDITION
 STD. TOLERANCES: M-2461 (UNLESS OTHERWISE NOTED)

MAWP 200 PSI @ 400°F

EXMT UG-20(f) CORR ALW 0 SH 0 HD
 WELD DETAILS: M-1932



HORIZONTAL AIR RECEIVER

FILE LOCATION: O:\SolidWorks\3000\302469

DRAWN BY: DATE:

APPR. BY: DATE:

SCALE: NONE

DRWG NO. **302469**

RELEASED FOR PRODUCTION
 Q.C. _____ DATE _____



REVISIONS				
REV.	BY	DESCRIPTION	DATE	APP.
A	EGB			EGB
B	JC			JC
C	MK			MK