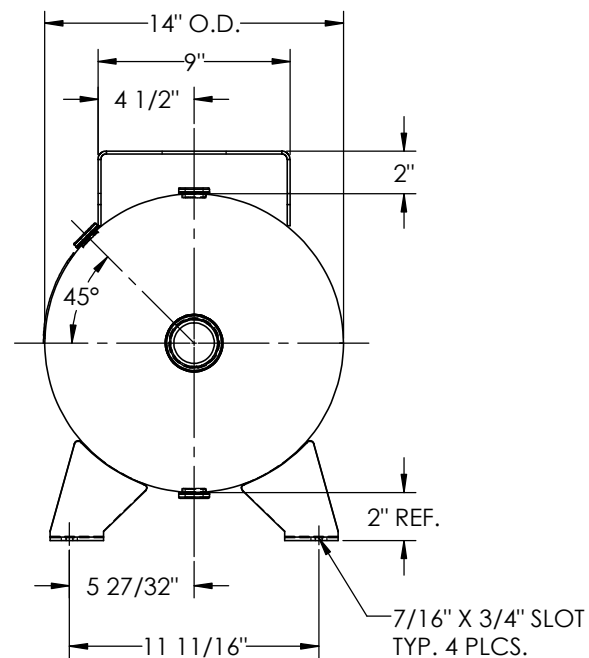
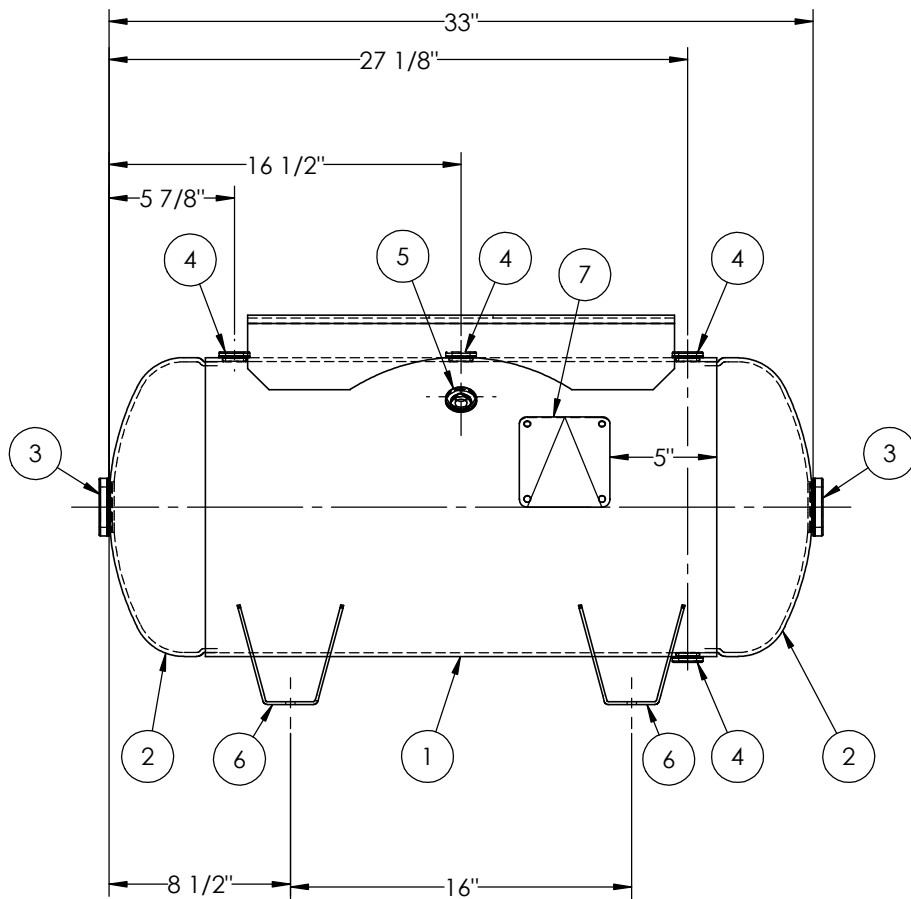


ITEM NO.	PART NO.	DESCRIPTION	QTY.
1	A302468-SL	SHELL LAYOUT FOR 14" O.D. TANK	1
2	H46887	.187 MIN. 14" O.D. 2:1 ELLIP. JOG. HEAD	2
3	F30315	1 1/2"-NPT FLAT FLANGE O-RING	2
4	F10250	1/2"-NPT FLAT FLANGE	4
5	F31826	1/4"-NPT FLAT FLANGE	1
6	A55819	FOOT WING FOR 16" TANK	4
7	A20910	ASME DATA PLATE	1
8	A57672	10GA TOPPLATE	1



NOTES:

SPECIFICATIONS

O.D. 14 LGTH. 33 MAWP 300 PSI @ 400°F  
 WT. 107 LBS.  
 S.A. 10.7 SQ.FT.  
 GAL. 20 CU.FT.2.6 CRN: H8370.1234567890  
 CODE: 49CFR Spec. Cylinder ASME Section VIII, Div. 1, LATEST EDITION UG20(f) CORR ALW 0 SH 0 HD  
 STD. TOLERANCES: M-2461 (UNLESS OTHERWISE NOTED) WELD DETAILS: M-1932



**HORIZONTAL AIR RECEIVER**

RELEASED FOR PRODUCTION  
 Q.C. \_\_\_\_\_ DATE \_\_\_\_\_

REV.	BY	DESCRIPTION	DATE	APP.
A	MK			MK
B	RK			MK

DRAWN BY: EGB DATE:

APPR. BY: MR DATE:

SCALE: NONE

DRWG NO.  
**302468**

