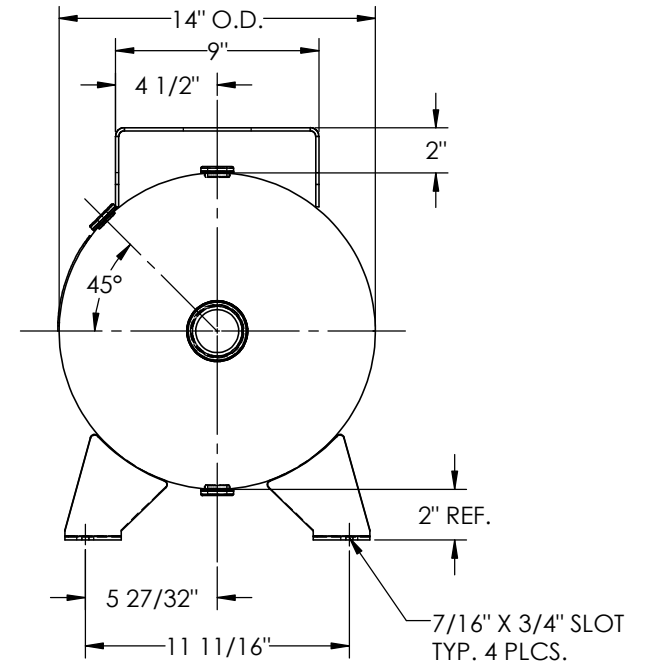
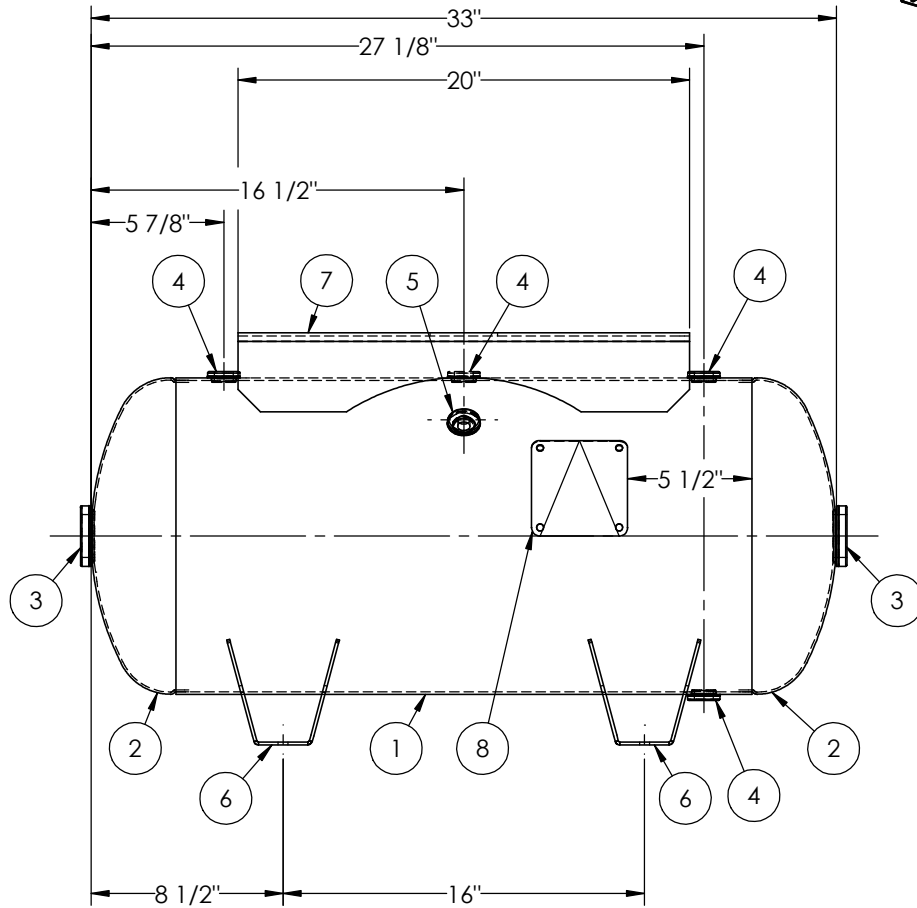
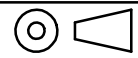


ITEM NO.	PART NO.	DESCRIPTION	QTY.
1	A302467-SL	SHELL LAYOUT FOR 14" O.D. TANK	1
2	H12081	.094 MIN. 14" O.D. 2:1 ELLIP. JOG. HEAD	2
3	F30315	1 1/2"-NPT FLAT FLANGE O-RING	2
4	F10250	1/2"-NPT FLAT FLANGE	4
5	F31826	1/4"-NPT FLAT FLANGE	1
6	A55819	FOOT WING FOR 16" TANK	4
7	A57672	10GA TOPPLATE	1
8	A20910	ASME DATA PLATE	1



NOTES:

RELEASED FOR PRODUCTION
Q.C. _____ DATE _____



SPECIFICATIONS

O.D. 14 LGTH. 33 MAWP 200 PSI @ 400°F
 WT. 71 LBS.
 S.A. 10.7 SQ.FT.
 GAL. 20 CU.FT.2.6 CRN: H5605.5123467890
 CODE: ASME Section VIII, Div.1, LATEST EDITION
 STD. TOLERANCES: M-2461 (UNLESS OTHERWISE NOTED)
 EXMT UG20(f) CORR ALW 0 SH 0 HD
 WELD DETAILS: M-1932



HORIZONTAL AIR RECEIVER

REVISIONS			
REV.	BY	DESCRIPTION	DATE
A	EGB		
B	EGB		
C	MK		
D	KG		
E	RK		

DRAWN BY:	EGB	DATE:	
APPR. BY:	EGB	DATE:	
SCALE:	NONE	DRWG NO.	302467