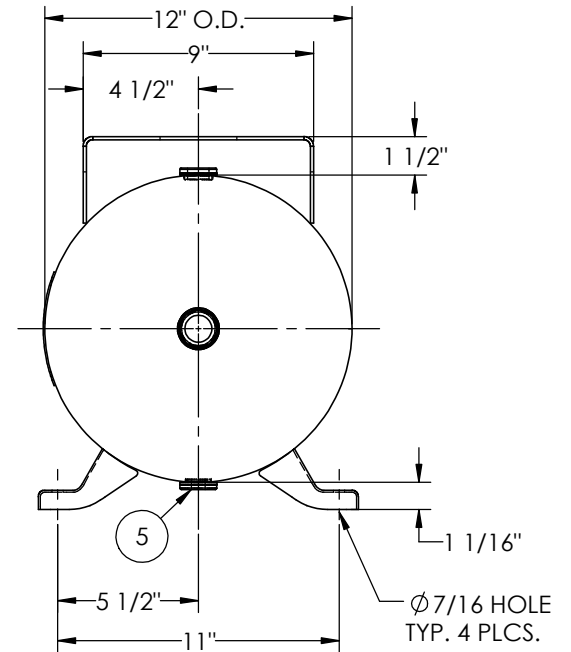
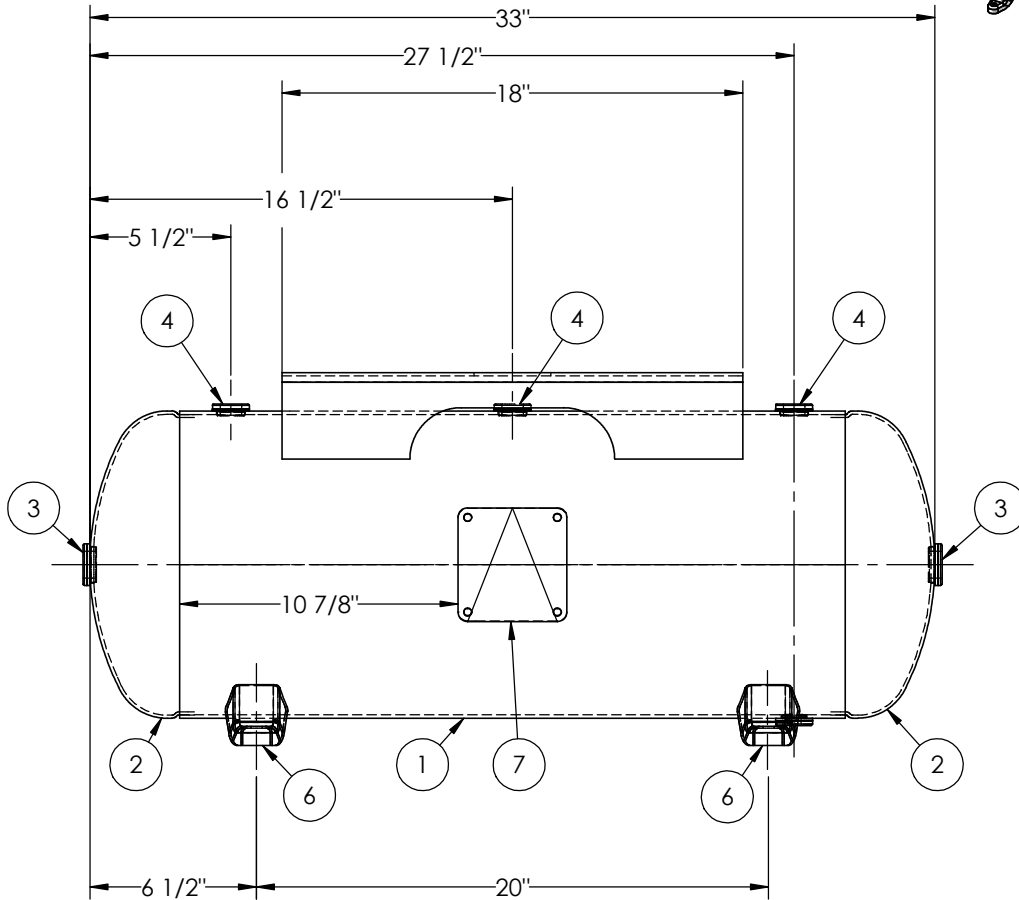


ITEM NO.	PART NO.	DESCRIPTION	QTY.
1	A302465-SL	SHELL LAYOUT FOR 12" O.D. TANK	1
2	H44364	.123 MIN. 12" O.D. 2:1 ELLIP. JOG. HEAD	2
3	F31840	3/4"-NPT FLAT FLANGE	2
4	F10250	1/2"-NPT FLAT FLANGE	3
5	F31826	1/4"-NPT FLAT FLANGE	1
6	A21150.1	DEFIANCE FOOT H1011X	4
7	A20910	ASME DATA PLATE	1
8	A88700	10GA TOPPLATE	1



NOTES:

RELEASED FOR PRODUCTION  
Q.C. \_\_\_\_\_ DATE \_\_\_\_\_

SPECIFICATIONS	
O.D. 12 LGTH. 33	MAWP 300 PSI @ 400°F
WT. 66 LBS.	
S.A. 9.1 SQ.FT.	
GAL. 15 CU.FT.2	CRN: H8368.1234567890
CODE: ASME Section VIII, Div. 1, LATEST EDITION	EXMT UG20(f) CORR ALW 0 SH 0 HD
STD. TOLERANCES: M-2461 (UNLESS OTHERWISE NOTED)	WELD DETAILS: M-1932

**MANCHESTER TANK**

**HORIZONTAL AIR RECEIVER**

DRAWN BY: EGB	DATE:
APPR. BY: JR	DATE:
SCALE: NONE	DRWG NO. <b>302465</b>

REVISIONS			
REV.	BY	DESCRIPTION	DATE
A	MK		
B	RK		