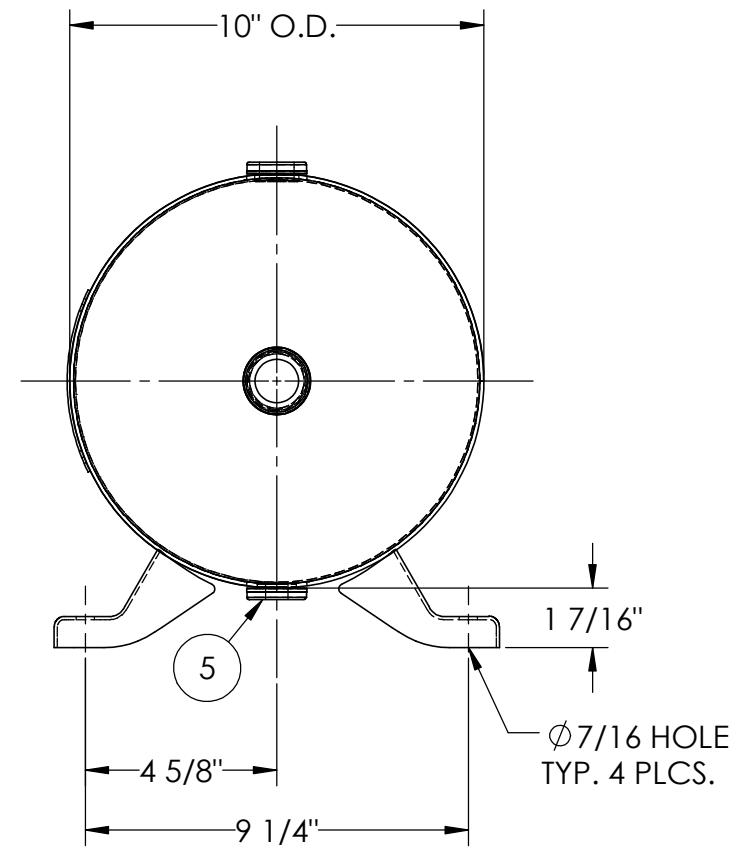
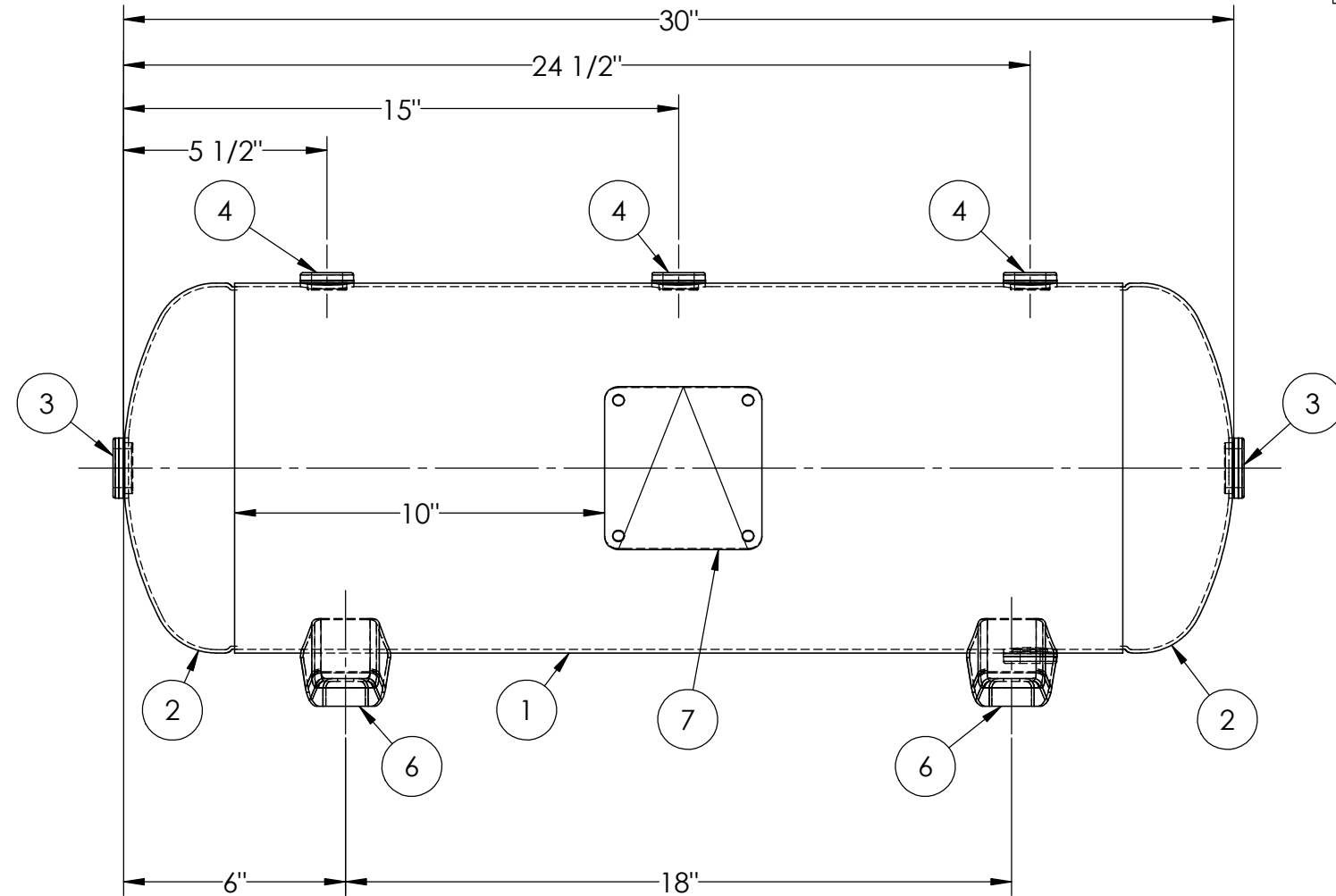


ITEM NO.	PART NO.	DESCRIPTION	QTY.
1	A302460-SL	SHELL LAYOUT FOR 10" O.D. TANK	1
2	H11001	.094 MIN. 10" O.D. 2:1 ELLIP. JOG. HEAD	2
3	F31840	3/4"-NPT FLAT FLANGE	2
4	F10250	1/2"-NPT FLAT FLANGE	3
5	F31826	1/4"-NPT FLAT FLANGE	1
6	A21150.1	DEFIANCE FOOT H1011X	4
7	A20910	ASME DATA PLATE	1



NOTES:

SPECIFICATIONS

O.D. 10 LGTH. 30  
 WT. 33 LBS.  
 S.A. 6.9 SQ.FT.  
 GAL. 10 CU.FT.1.2 CRN: F2150.1C  
 CODE: ASME Section VIII, Div.1, LATEST EDITION  
 STD. TOLERANCES: M-2461 (UNLESS OTHERWISE NOTED)

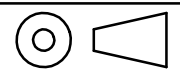
MAWP 200 PSI @ 400°F

EXMT UG20(f) CORR ALW 0 SH 0 HD  
 WELD DETAILS: M-1932



**HORIZONTAL AIR RECEIVER**

RELEASED FOR PRODUCTION  
 Q.C. \_\_\_\_\_ DATE \_\_\_\_\_



REVISIONS				
REV.	BY	DESCRIPTION	DATE	APP.
A	DP			DP
B	MK			MK
C	RK			MK

DRAWN BY: EGB	DATE:
APPR. BY: JR	DATE:
SCALE: NONE	DRWG NO. <b>302460</b>