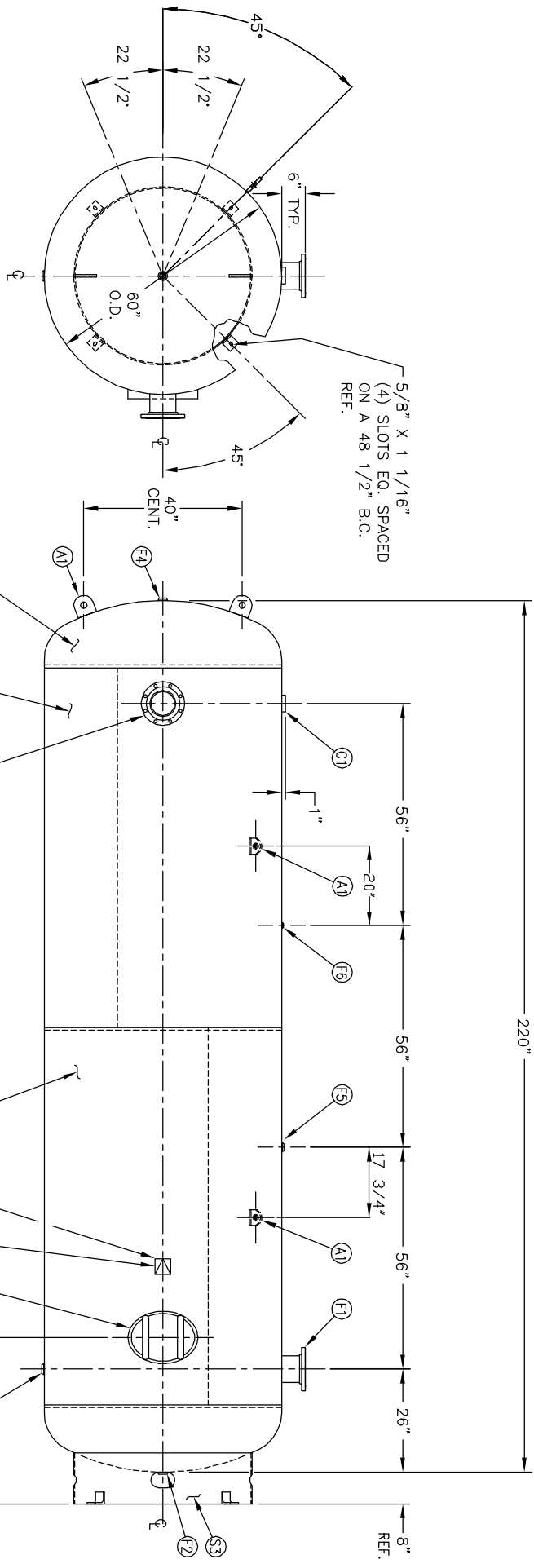




6" NOZZLE DETAIL

| NO. QTY. | DESCRIPTION                                   | SPEC               | SUB-DWG. |
|----------|---|--------------------|----------|
| S1 1     |   |                    |          |
| S2 1     |   |                    |          |
| H1 2     |   |                    |          |
| F1 2     | 6" 150# ANSI RF SQ. FLANGE                    | SA-105             |          |
| F1 2     | 6" SCH.120 PIPE X 7 1/2" LONG                 | SA-106-B           |          |
| F1 2     | .134 X 8 5/8" O.D. X 6 5/8" I.D. BACKING RING | C1008/SA-36        |          |
| F2 1     | 1 1/4"-NPT 1500# FLAT FLANGE                  | SA-181-70          |          |
| F3 1     | 1 1/4"-NPT 1500# RADIAL FLANGE                | SA-181-70          |          |
| F4 1     | 1"-NPT 1500# FLAT FLANGE                      | SA-181-70          |          |
| F5 1     | 1"-NPT 1500# RADIAL FLANGE                    | SA-181-70          |          |
| F6 1     | 1/4"-NPT 1500# FLAT FLANGE                    | SA-181-70          |          |
| C1 1     | 3"-NPT 3000# HALF COUPLING                    | SA-105             |          |
| M1 1     | 12" X 16" X 1" X 4" 300# MANWAY               | SA-675-70/SA-106-C |          |
| A1 4     | 3/4" X 5" X 5" STANDARD LIFT LUG              | A84524             |          |
| S3 1     | STANDARD 8" SKIRT & CLIP ASSY. FOR 60" DIA.   | A85012             |          |
| NP 1     | ASME DATA PLATE                               | C1010              |          |



|  |                            |
|--|----------------------------|
| ENG. _____ DATE _____  | Q.C. _____ DATE _____      |
| REV. DATE BY   | REVISION                   |
| 1 AW   | JR                         |
| 2 JC   |                            |
| NOTES  |                            |
| SPECIFICATIONS   |                            |
| O.D. 60  | LGH. 220                   |
| MANIP 200 PSI @ 400 F.   | SH. HD.                    |
| RT - MDMT -20 F @ PSI  | QAL. 2560 S.A.             |
| EXMT TEST  | WT. 5300# CU.T.            |
| CRN  | SH. HD.                    |
| WELD DETAILS: M-1932   | CODE ASME SEC. VIII DIV. 1 |
| STD. TOLERANCES (UNLESS OTHERWISE NOTED): M-2461   | PER DATE OF DWG/LAST REV   |
|  |                            |
| <p>60" X 220" VERT. STANDARD AIR RECEIVER</p> <p>SCALE: NONE</p> <p>DRAWING NO. 302453</p> |                            |