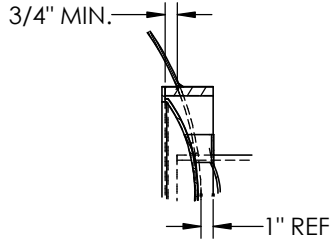


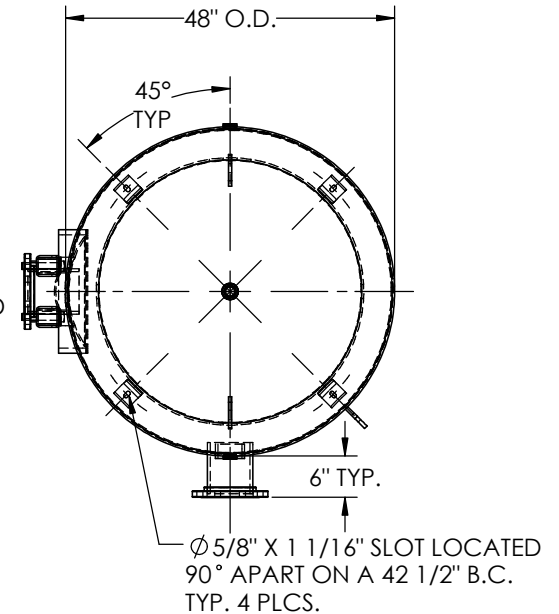
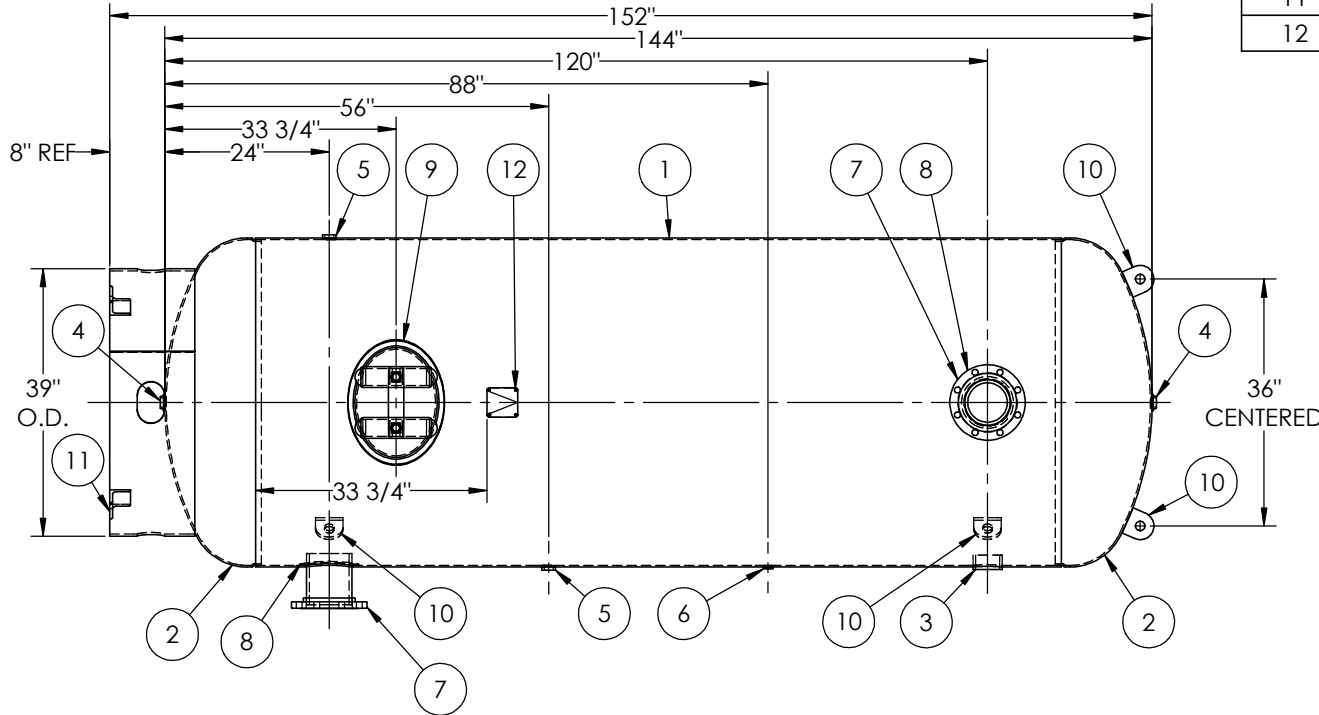
6" NOZZLE DETAIL



MANWAY DETAIL



ITEM NO.	PART NO.	DESCRIPTION	QTY.
1	302443-SL	SHELL LAYOUT FOR 48" TANK	1
2	H46475	.250 MIN. 48" O.D. 2:1 ELLIP. JOG. HEAD	2
3	F10400	3"-NPT HALF COUPLING	1
4	F10370	1"-NPT FLAT FLANGE	2
5	F30263	1"-NPT RADIAL FLANGE	2
6	F31826	1/4"-NPT FLAT FLANGE	1
7	A99220	6" 150# ANSI, S/80 PIPE, RFSO FLANGE	2
8	A84390.48	6" PIPE BACKING RING	2
9	A72305	12" X 16" X 3/4" X 4" 300# MANWAY	1
10	A85015	1/2" X 4" X 4" LIFT LUG	4
11	A85008	BASERING ASSEMBLY	1
12	A20910	ASME DATA PLATE	1



NOTES:
 1. BREAK ALL EXPOSE INTERIOR NOZZLE EDGES.
 2. FLANGE BOLT HOLES SHOULD STRADDLE VESSEL CENTERLINES.

SPECIFICATIONS	
O.D. 48 LGTH. 144	MAWP 165 PSI @ 400°F
WT. 2036 LBS.	
S.A. 160.54 SQ.FT.	
GAL. 1060 CU.FT.139.65 CRN: L8976.5C	
CODE: ASME Section VIII, Div.1, LATEST EDITION	W
STD. TOLERANCES: M-2461 (UNLESS OTHERWISE NOTED)	EXMT UG20(f) CORR ALW 0 SH 0 HD
	WELD DETAILS: M-1932



VERTICAL AIR RECEIVER

REVISIONS			
REV.	BY	DESCRIPTION	DATE
E	EASi		
F	KG		
G	RC		
H	MK		

DRAWN BY: B. SKINNER	DATE:
APPR. BY: J. REED	DATE:
SCALE: NONE	DRWG NO. 302443

RELEASED FOR PRODUCTION
 Q.C. _____ DATE _____

