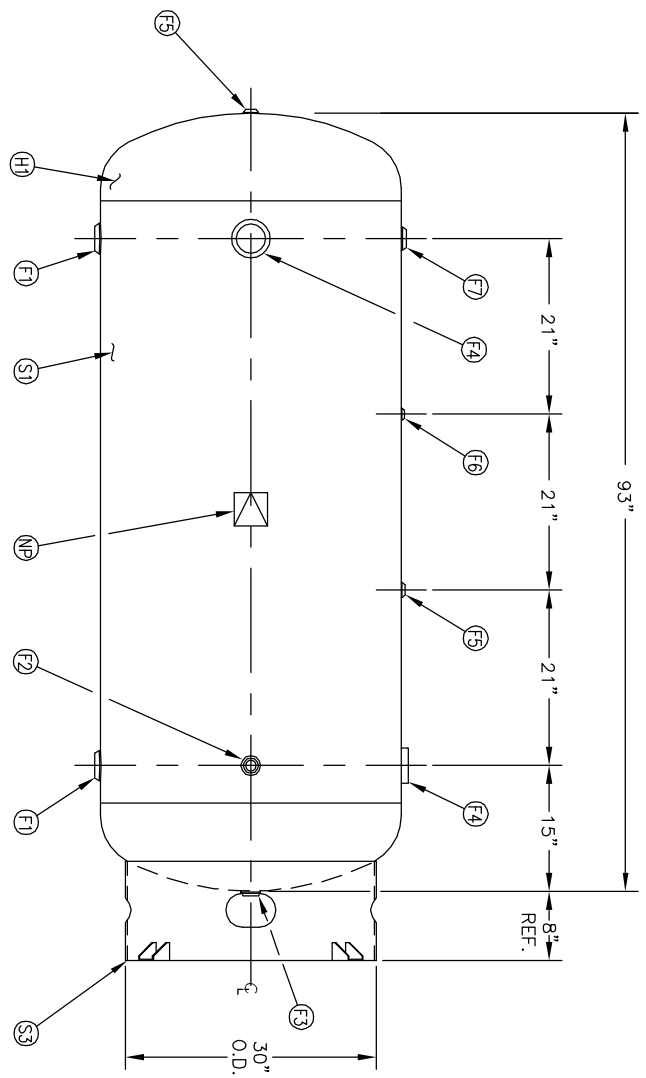
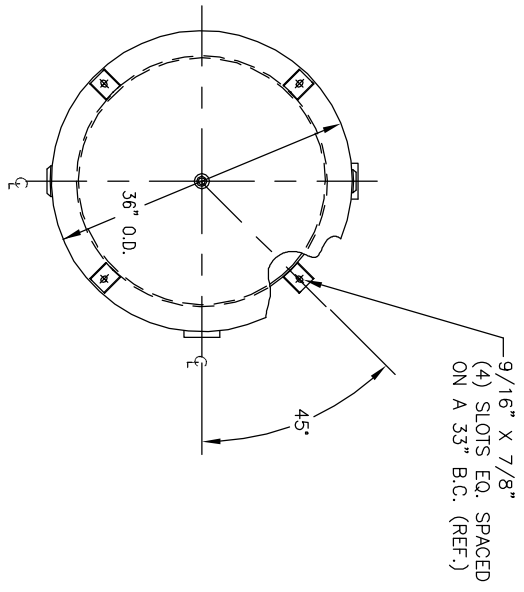


NO. QTY	DESCRIPTION	SPEC	SUB-DWG.
F1 2	2"-NPT 1500# RADIAL FLANGE	SA-181-70	
F2 1	1"-NPT 1500# RADIAL FLANGE	SA-181-70	
F3 1	1"-NPT 1500# FLAT FLANGE	SA-181-70	
F4 2	3"-NPT 3000# HALF COUPLING	SA-105	
F5 2	1/2"-NPT 1500# FLAT FLANGE	SA-181-70	
F6 1	1/4"-NPT 1500# FLAT FLANGE	SA-181-70	
F7 1	1 1/2"-NPT 1500# RADIAL FLANGE	SA-181-70	
S3 1	STANDARD 8" HIGH SKIRT & CLIP ASSY. FOR 36" DIA.		AB5004
NP 1	ASME DATA PLATE	C1010	



SM/DATE	BY	REVISION	APP	XREF	REV	NOTES	SPECIFICATIONS
1	JC		JPR				
A	JPR		JC				
B	JC		JC				

ENG. \_\_\_\_\_ DATE \_\_\_\_\_  
 Q.C. \_\_\_\_\_ DATE \_\_\_\_\_

**MANCHESTER TANK**  
 36" X 93" VERT. STANDARD AIR RECEIVER  
 Q:\3000

0.D. 36 LGH. 93  
 MAMP 200 PSI @ 400 F  
 RT- ADMT T@ PSI  
 EXMT UG20(f) TEST PSI  
 CRN ---

QAL 400 SA. 78.53  
 Wt. 740 CUFT. 50.33  
 CORR ALW SH HD  
 CODE ASME UM-12(c)  
 PER DATE OF DWG/LAST REV

WELD DETAILS: M-1932  
 STD. TOLERANCES (UNLESS OTHERWISE NOTED): M-2461

DRAWN BY: S. Flanagan  
 APP. BY: J. Reed  
 DATE: \_\_\_\_\_  
 SCALE: NONE  
 DRAWING NO. 302433