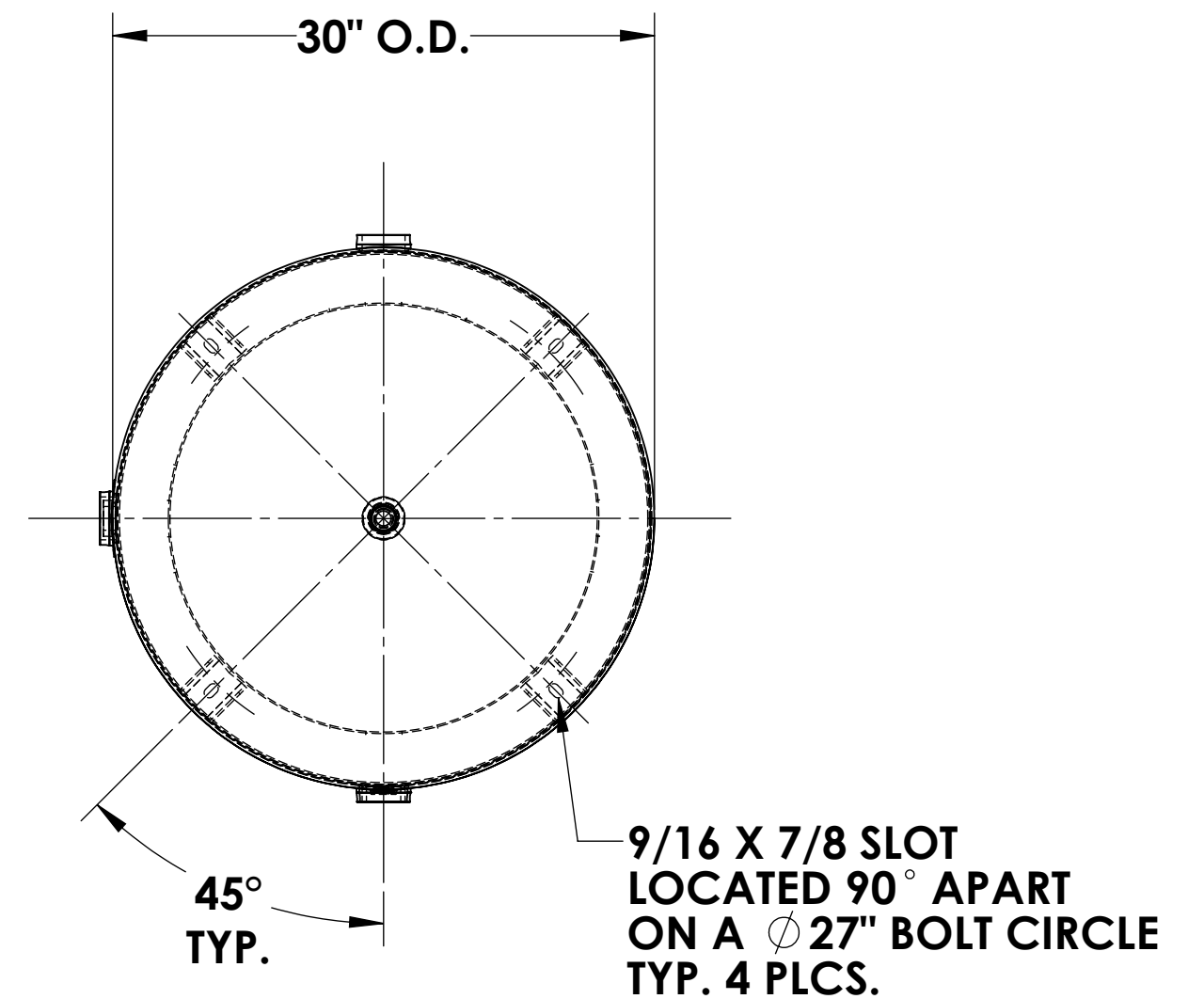
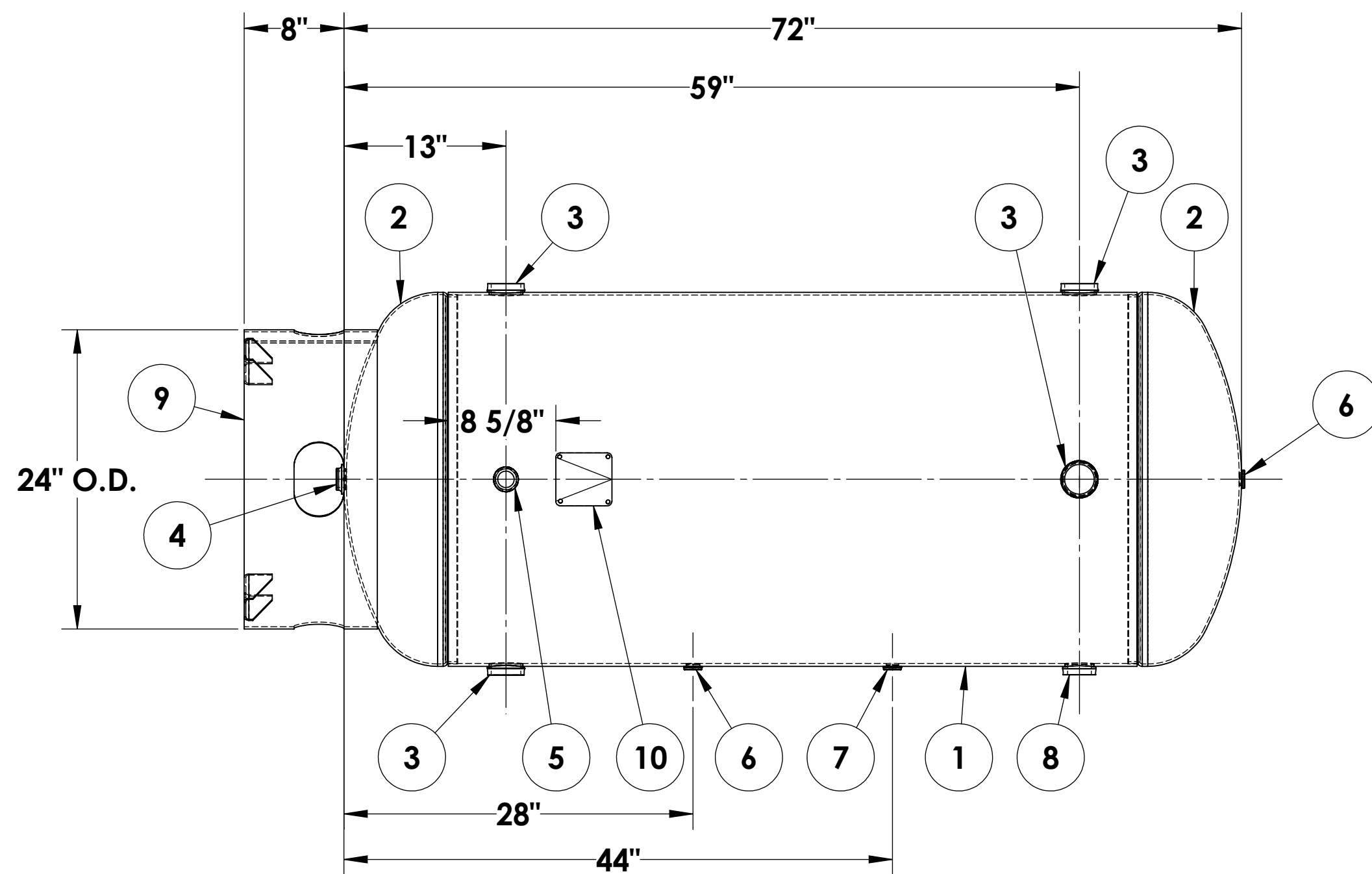




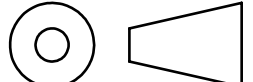
ITEM NO.	PART NO.	DESCRIPTION	QTY.
1	302426-SL	SHELL LAYOUT FOR 30" TANK	1
2	H32041	.186 MIN. 30" O.D. 2:1 ELLIP. JOG. HEAD	2
3	F30318	2"-NPT RADIAL FLANGE O-RING	4
4	F10370	1"-NPT FLAT FLANGE	1
5	F30263	1"-NPT RADIAL FLANGE	1
6	F10250	1/2"-NPT FLAT FLANGE	2
7	F31826	1/4"-NPT 1500# FLAT FLANGE	1
8	F30317	1 1/2"-NPT RADIAL FLANGE O-RING	1
9	A85002	BASERING ASY.	1
10	A20910	ASME DATA PLATE	1



NOTES:

RELEASED FOR PRODUCTION

Q.C. _____ DATE _____



SPECIFICATIONS	
O.D. 30 LGTH. 72	MAWP 200 PSI @ 400°F
WT. 533 LBS.	
S.A. 50 SQ.FT.	
GAL. 200 CU.FT. 26.5 CRN: F0628.1C	
CODE: ASME Section VIII, Div.1 LATEST EDITION	EXMT UG20(f) CORR ALW 0 SH 0 HD
STD. TOLERANCES: M-2461 (UNLESS OTHERWISE NOTED)	WELD DETAILS: M-1932



MANCHESTER TANK

VERTICAL AIR RECEIVER

FILE LOCATION: O:\SolidWorks\3000\302426	
DRAWN BY:	DATE:
APPR. BY:	DATE:
SCALE: NONE	DRWG NO. 302426