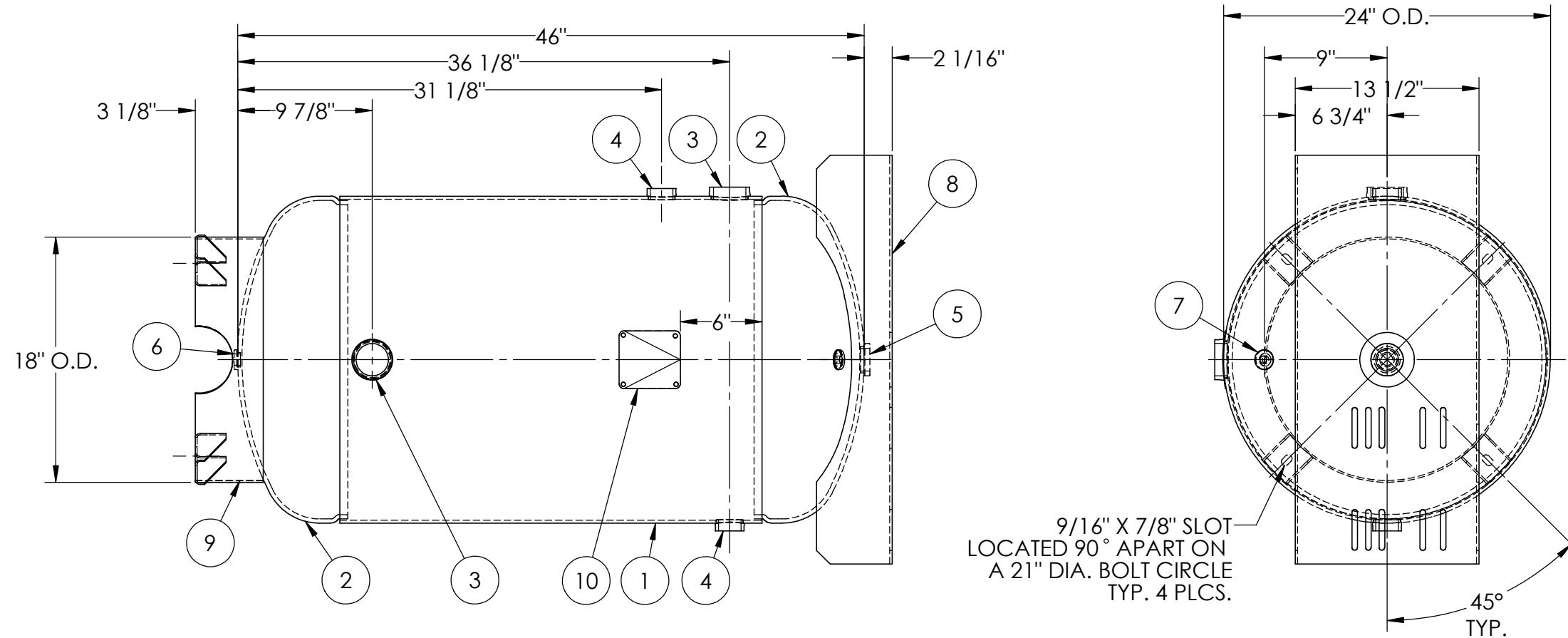




ITEM NO.	PART NO.	DESCRIPTION	QTY.
1	302420-SL	SHELL LAYOUT FOR 24" TANK	1
2	H44754	.285 MIN. 24" O.D. 2:1 ELLIP. JOG. HEAD	2
3	F30318	2"-NPT RADIAL FLANGE O-RING	2
4	F12520	1 1/4"-NPT RADIAL FLANGE	2
5	F10360	1 1/4"-NPT FLAT FLANGE	1
6	F10250	1/2"-NPT FLAT FLANGE	1
7	F31826	1/4"-NPT FLAT FLANGE	1
8	A55842	TOPPLATE	1
9	A89660	BASERING ASY FOR 24" VER REC	1
10	A20910	ASME DATA PLATE	1



NOTES:

SPECIFICATIONS

O.D. 24 LGTH. 46 MAWP 300 PSI @ 400°F
 WT. 354 LBS.
 S.A. 25.9 SQ.FT.
 GAL. 80 CU.FT.10.5 CRN: F1166.1C W
 CODE: ASME Section VIII, Div.1, LATEST EDITION EXMT UG-20(f) CORR ALW 0 SH 0 HD
 STD. TOLERANCES: M-2461 (UNLESS OTHERWISE NOTED) WELD DETAILS: M-1932



VERTICAL AIR RECEIVER

FILE LOCATION: O:\SolidWorks\3000\302420
 DRAWN BY: DATE:

RELEASED FOR PRODUCTION
 Q.C. _____ DATE _____

REV.	BY	DESCRIPTION	DATE	APP.
A	EGB			EGB
B	EGB			TA
C	BC			BC

APPR. BY: DATE:
 SCALE: NONE
 DRWG NO. **302420**

