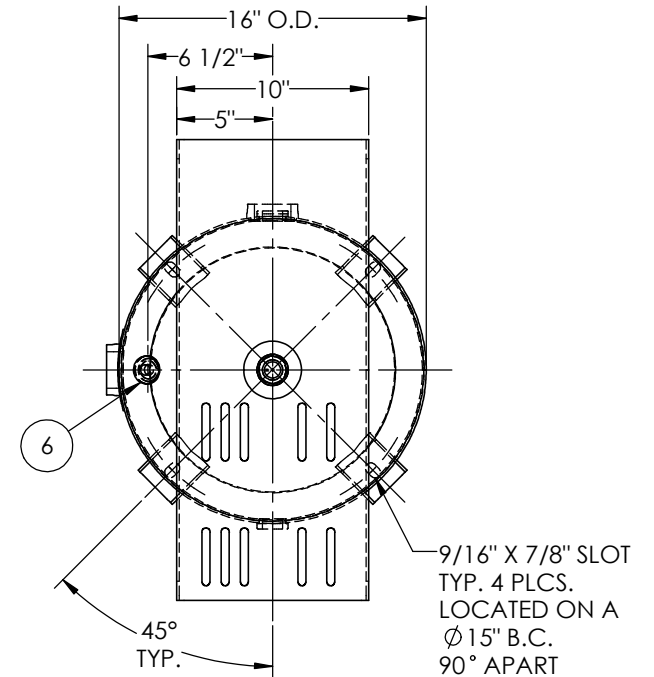
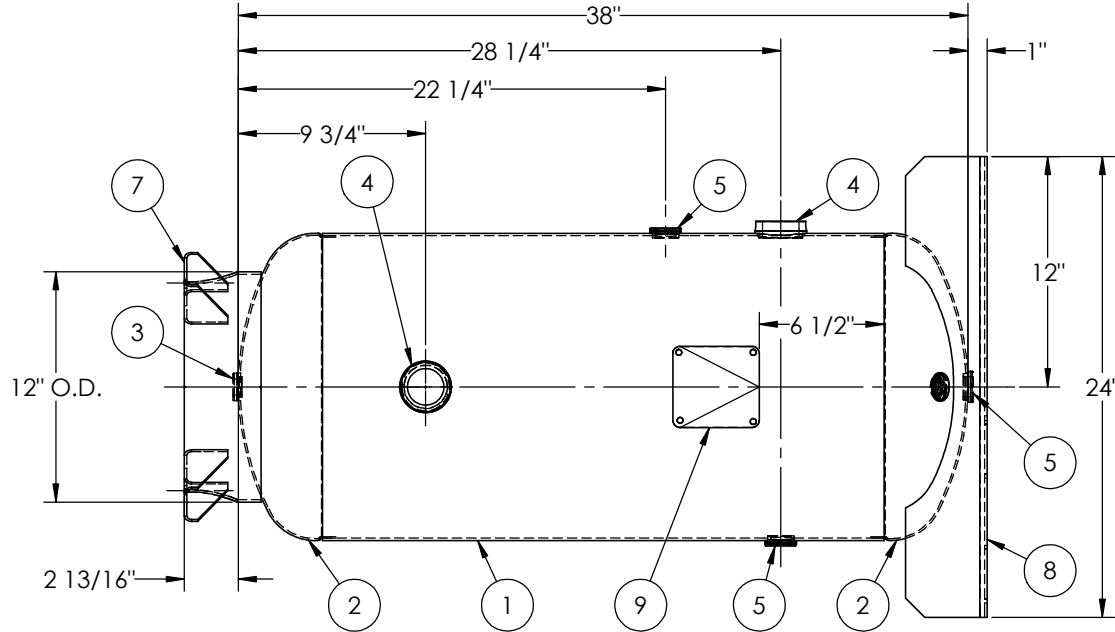


ITEM NO.	PART NO.	DESCRIPTION	QTY.
1	302408-SL	SHELL LAYOUT FOR 16" O.D. TANK	1
2	H32011	.099 MIN. 16" O.D. 2:1 ELLIP. JOG. HEAD	2
3	F10250	1/2"-NPT FLAT FLANGE	1
4	F30317	1 1/2"-NPT RADIAL FLANGE O-RING	2
5	F31840	3/4"-NPT FLAT FLANGE	3
6	F31826	1/4"-NPT FLAT FLANGE	1
7	A55879	10GA BASERING ASY	1
8	A76641	TOPPLATE	1
9	A20910	ASME DATA PLATE	1



NOTES:

SPECIFICATIONS

O.D. 16 LGTH. 38 MAWP 200 PSI @ 400°F
 WT. 98 LBS.
 S.A. 14.1 SQ.FT.
 GAL. 30 CU.FT.4 CRN: F2151.1C
 CODE: ASME Section VIII, Div.1, LATEST EDITION
 STD. TOLERANCES: M-2461 (UNLESS OTHERWISE NOTED) EXMT UG20(f) CORR ALW 0 SH 0 HD
 WELD DETAILS: M-1932



VERTICAL AIR RECEIVER

RELEASED FOR PRODUCTION
 Q.C. _____ DATE _____

REVISIONS				
REV.	BY	DESCRIPTION	DATE	APP.
A	EGB			EGB
B	EGB			TA
C	KG			DS
D	RK			MK

DRAWN BY:	EGB	DATE:	
APPR. BY:	EGB	DATE:	
SCALE:	NONE	DRWG NO.	302408