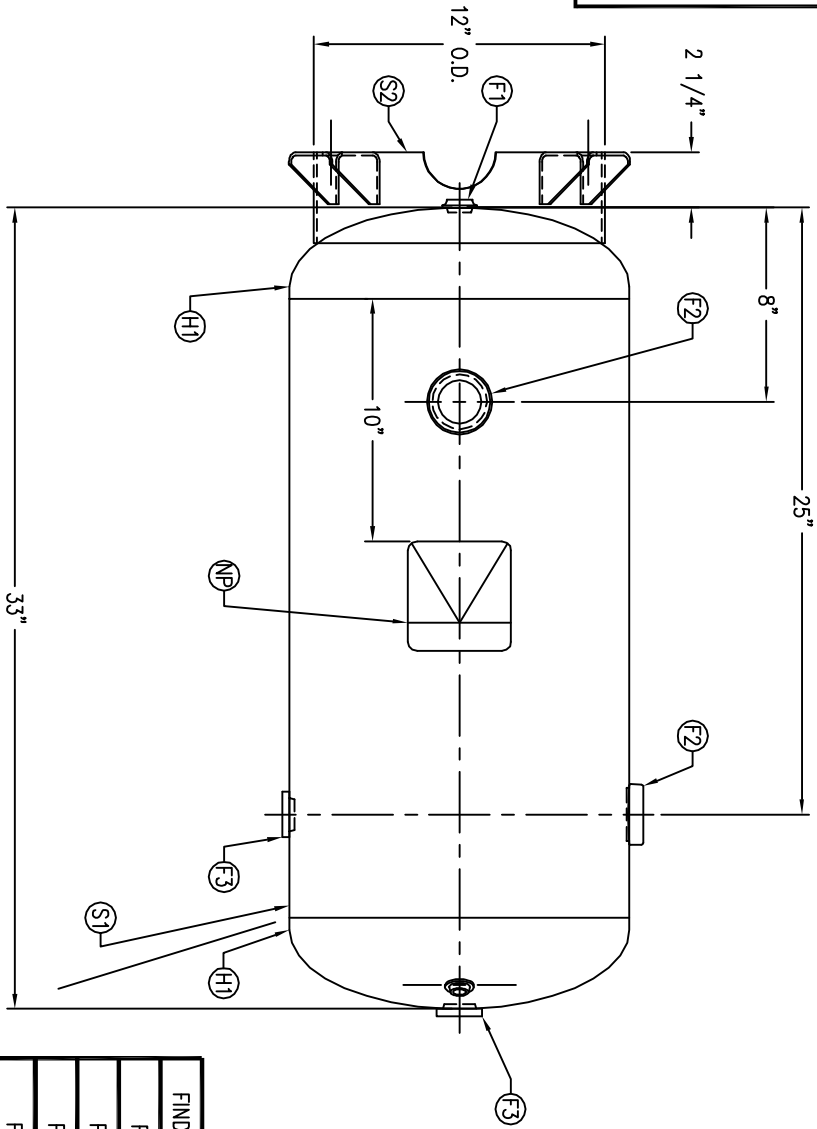
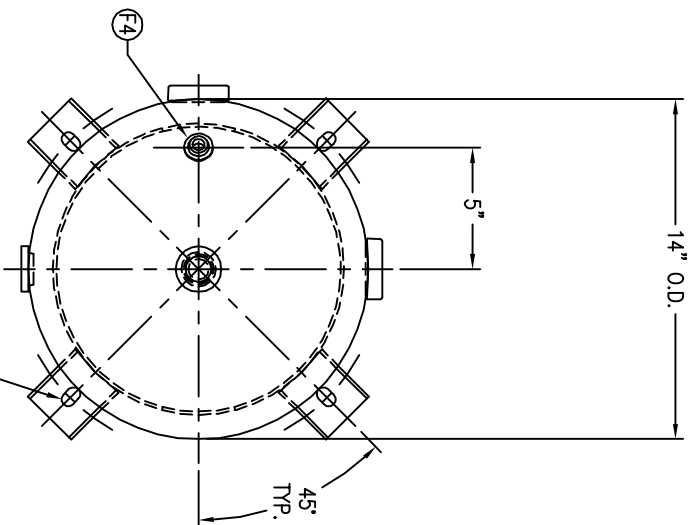


CODE/ADDENDA 2010/2011A APPROVED DP  
 RELEASED FOR PRODUCTION  
 Q.C. \_\_\_\_\_ DATE \_\_\_\_\_




FIND NO.	NPT SIZE
F1	1/2
F2	1-1/2
F3	3/4
F4	1/4



9/16" X 7/8" SLOT  
 ON A 15" BOLT CIRCLE  
 TYP. 4 PLCS.

SYM	DATE	BY	REVISION	APP	XREF	REV.	NOTES
A		EGB			C1111		
B		EGB					

SPECIFICATIONS	
O.D. 14	LGTH. 33
MAWP 200	PSI @ 650 °F
RT- MDMT-20	°F @ 200 PSI
EXMT UG20(f)	TEST PSI
XRAY	W
CRN	HS605.5123467890
WELD DETAILS:	M-1932
STD. TOLERANCES	(UNLESS OTHERWISE NOTED): M-2461



MANCHESTER VALVE

VERTICAL AIR RECEIVER

DRAWN BY	DATE	SCALE:	NONE
EGB		DRAWING NO.	302404
APP. BY	DATE		
EGB			