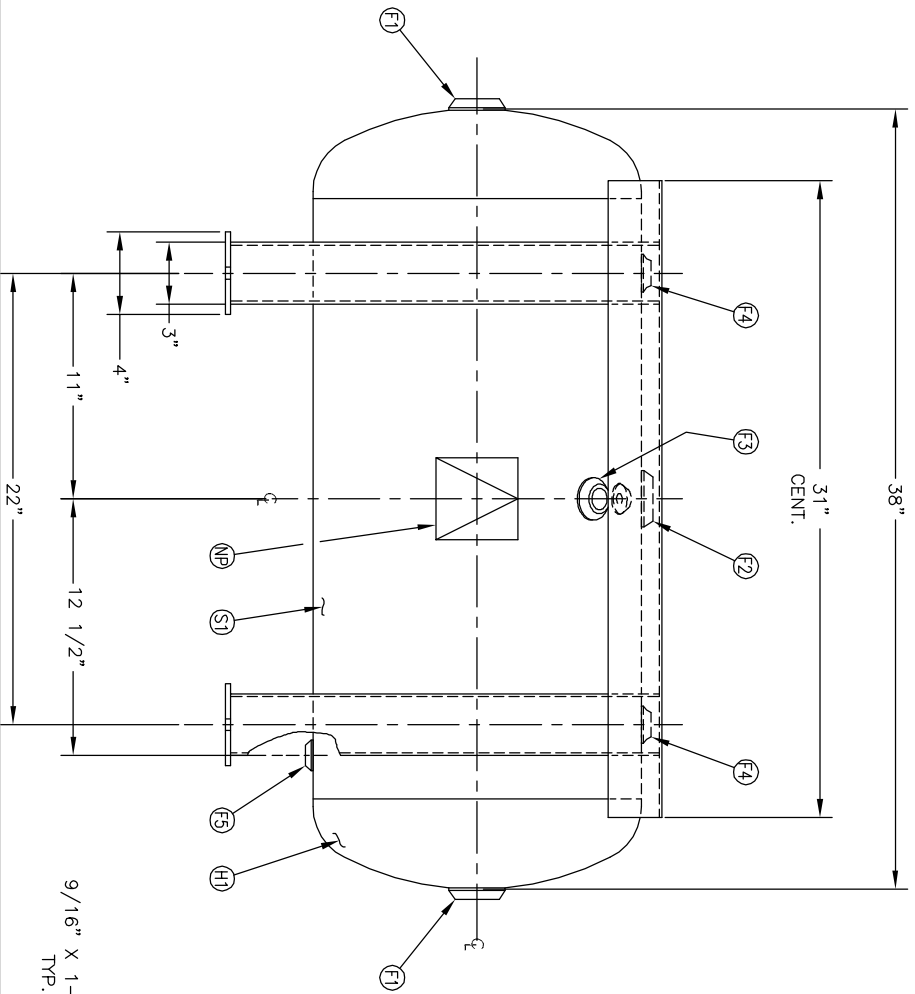
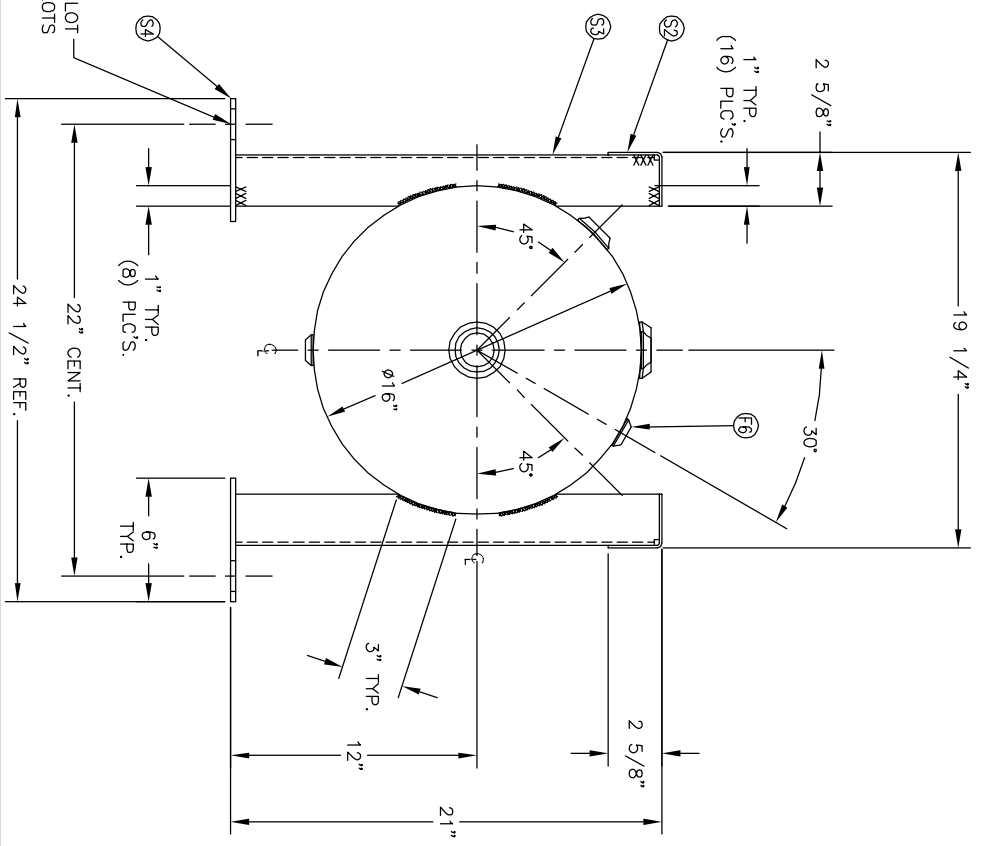


DETAIL OF FOOT



9/16" X 1-1/2" SLOT
TYP. (4) SLOTS



NO. QTY	DESCRIPTION	SPEC	SUB-DWG.
S1 1			
H1 2			
F1 2	1 1/2"-NPT 1500# FLAT FLANGE	SA-181-70	
F2 1	1 1/2"-NPT 1500# RADIAL FLANGE	SA-181-70	
F3 1	3/4"-NPT 1500# RADIAL FLANGE	SA-181-70	
F4 2	1/2"-NPT 1500# FLAT FLANGE	SA-181-70	
F5 1	1/4"-NPT 1500# FLAT FLANGE	SA-181-70	
F6 1	1/8"-NPT 1500# FLAT FLANGE	SA-181-70	
S2 2	1/8" X 5" X 31" FORMED RAIL	C1008	
S3 4	1/4" X 7 1/2" X 20 7/8" FORMED LEG	C1008	
S4 4	1/4" X 4" X 6" FOOT	C1008	
NP 1	ASME DATA PLATE	C1010	

SPECIFICATIONS

0.D. 16	LGH. 38	SH.
MANIP 200 PSI @ 650 F	HD.	
RT- MDMT -20 F @ 200 PSI	QAL 30	SA 14.4
EXMT TEST PSI	WT. 125#	CUT. 4
XRAY	SH	HD
CEN. F2151.1C	CODE ASME SECT. VIII, DIV. 1	
WELD DETAILS: M-1932	PER DATE OF DWG/LAST REV	
STD. TOLERANCES (UNLESS OTHERWISE NOTED): M-2461		

MANCHESTER TANK

16" X 38" STD. HORIZ. FRAME-MOUNT REC.

DRAWN BY	DATE	SCALE: NONE
JR		
APP. BY	DATE	DRAWING NO. 305438
JR		

SM/DATE	BY	REVISION	APP	XREF	REV	NOTES