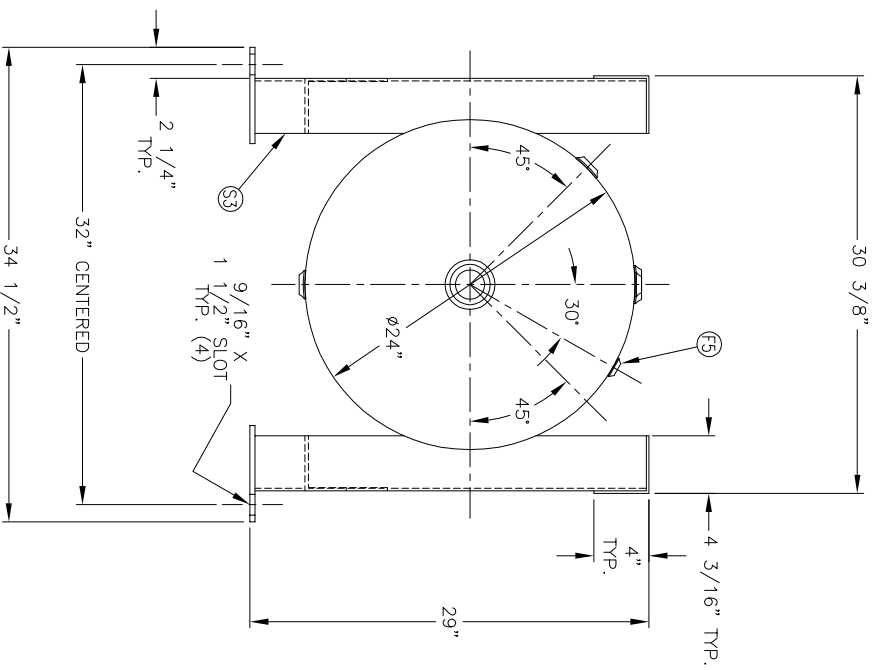
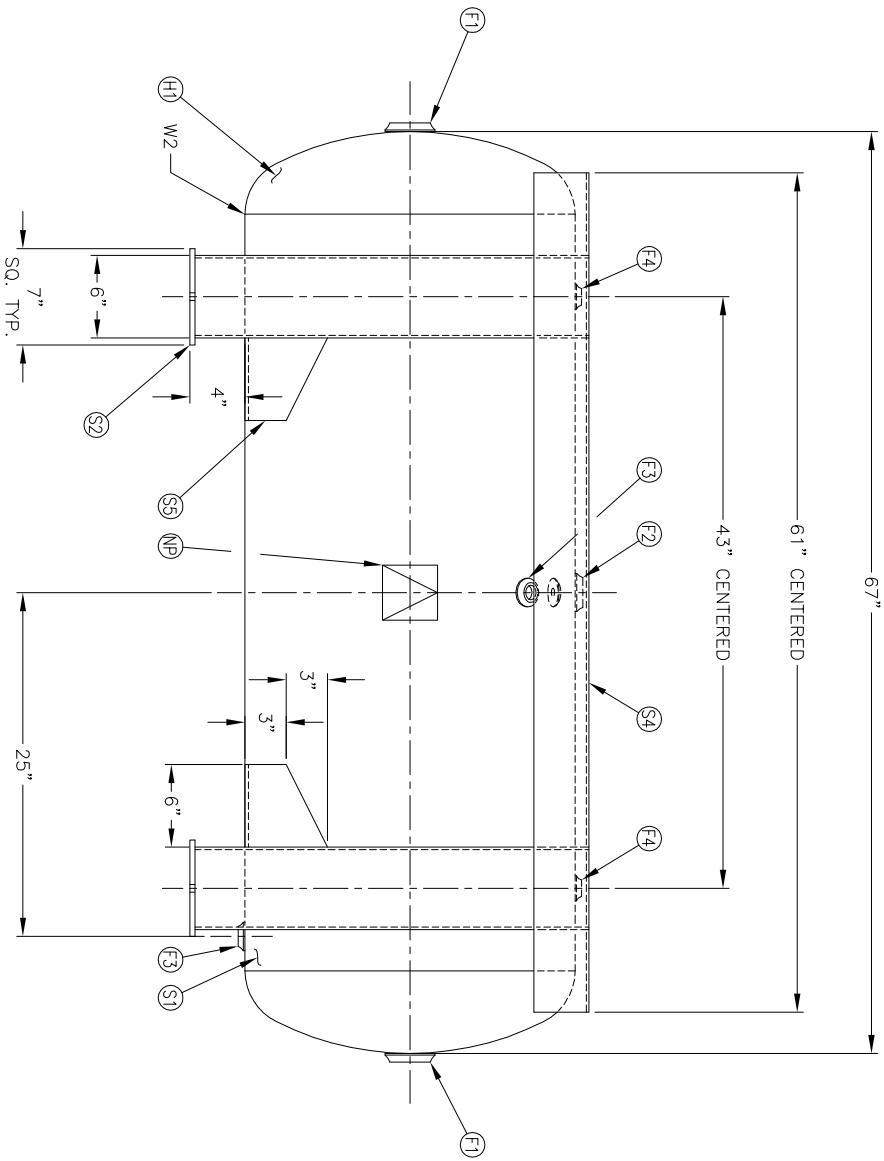


NO. QTY.	DESCRIPTION	SPEC	SUB-DWG.
S1 1			
H1 2			
F1 2	2 NPT 1500# FLAT FLANGE	SA-181-70	
F2 1	1 1/2 NPT 1500# RADIAL FLANGE	SA-181-70	
F3 2	3/4 NPT 1500# FLAT FLANGE	SA-181-70	
F4 2	1/2 NPT 1500# FLAT FLANGE	SA-181-70	
F5 1	1/8 NPT 1500# FLAT FLANGE	SA-181-70	
S2 4	3/8" X 7" X 7" PAD	C1008/SA-36	
S3 4	3/16" X 13 1/4" X 28 7/16" LEG	C1010	
S4 2	3/16" X 7 13/16" X 61" ANGLE	C1010	
S5 4	1/4" X 6" X 9 1/2" ANGLE	C1008	
NP 1	ASME DATA PLATE	C1010	



SYMBOL	DATE	BY	REVISION	APP	REF	REQ	NOTES

**SPECIFICATIONS**

O.D. 24 LGTH. 67  
 MANIP 200 PSI @ 450 °F

GAL. 120  
 WT. 460#

CORR ALW 0 SH 0 HD  
 CODE ASME SEC. VIII DIV. 1  
 PER DATE OF DWG/LAST REV



Q:\3000\

**HORZ. AIR REC.  
 GRASSHOPPER**

WELD DETAILS: M-1932  
 STD. TOLERANCES (UNLESS OTHERWISE NOTED): M-2461

SCALE: NONE  
 DRAWING NO. 302481

APP.	BY	DATE	DATE