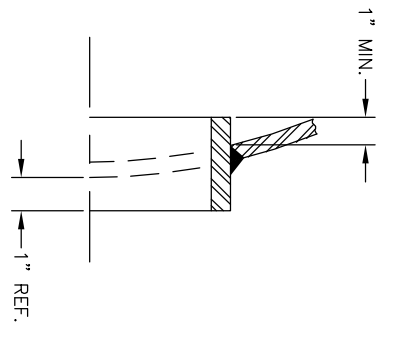
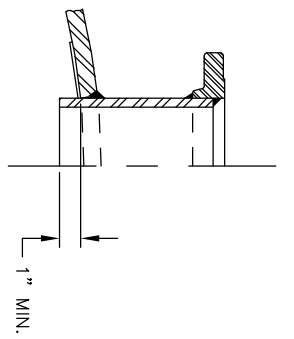


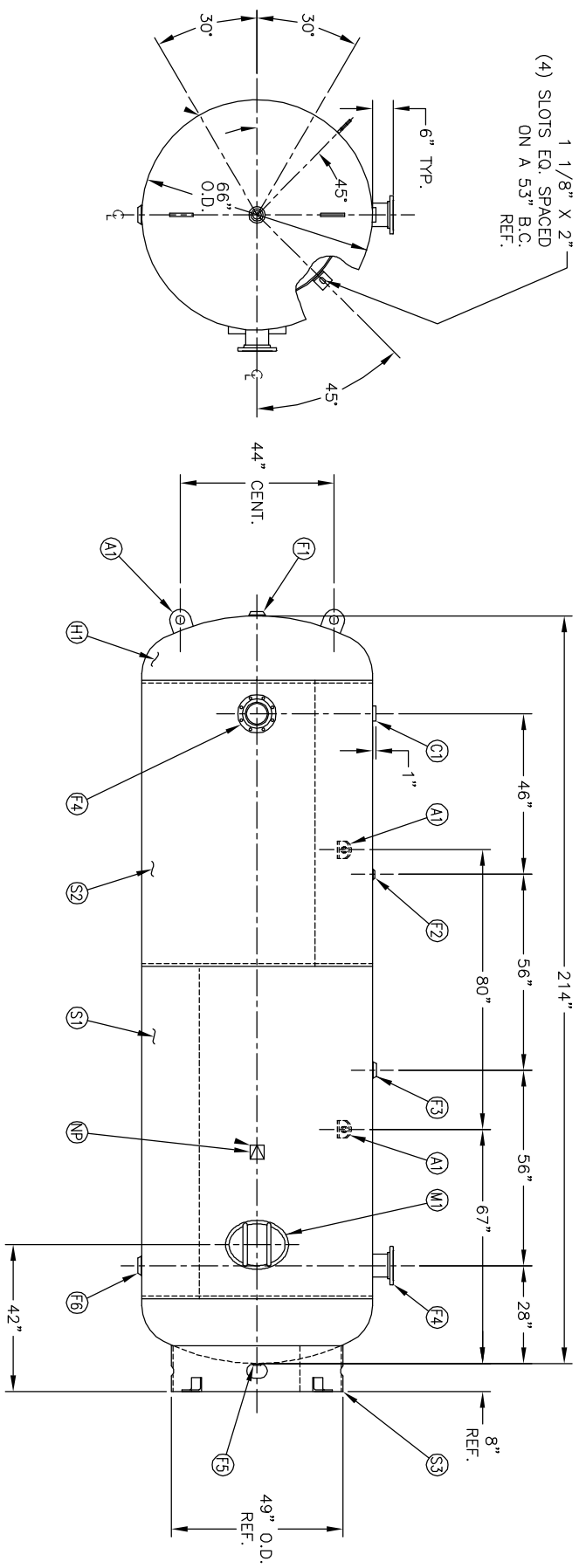
CODE/ADDENDA APPROVED  
 RELEASED FOR PRODUCTION  
 Q.C. \_\_\_\_\_ DATE \_\_\_\_\_



MANWAY DETAIL



NOZZLE DETAIL



NO. QTY	DESCRIPTION	SPEC	SUB-DWG.
S1 1			
S2 1			
H1 2			
C1 1	3 NPT 3000# HALF COUPLING	SA-105	
F1 1	1 NPT 1500# FLAT FLANGE	SA-181-70	
F2 1	1/4 NPT 1500# FLAT FLANGE	SA-181-70	
F3 1	1 NPT 1500# RADIAL FLANGE	SA-181-70	
F4 2	6" 150# ANSI RF SO. FLANGE	SA-105	
F4 2	6" SCH.80 PIPE X 7 1/2" LONG	SA-106-B	
F4 2	1.34 X 6 5/8" I.D. X 8 5/8" O.D. BACKING RING	C1008	
F5 1	1.1/4 NPT 1500# FLAT FLANGE	SA-181-70	
F6 1	1.1/4 NPT 1500# RADIAL FLANGE	SA-181-70	
M1 1	12" X 16" X 3/4" X 4" 300# MANWAY (OR 0H7098.5C)	SA-106-C	
S3 1	STANDARD 8" SKIRT & CLIP ASSY. FOR 66" DIA.	A84526	
A1 4	3/4" X 5" X 5" STANDARD LIFT LUG	A84524	
NP 1	ASME DATA PLATE	C1010	

SM	DATE	BY	REVISION	APP	NOTES	SPECIFICATIONS
A		AW		AW	BREAK ALL EXPOSED INTERIOR NOZZLE EDGES ALL FLANGE BOLT HOLES TO STRADDLE VESSEL CENTRELINES	O.D. 66 LGH. 214 SH. HD. MAMP 185 PSI @ 400 F. CAL. 3000 S.A. 326.60 RT- MDMT T@ PSI GAL. 5700 CU.FT. 393.35 EXMT TEST HD CRN --- PER DATE OF DWG/LAST REV WELD DETAILS: M-1932 STD. TOLERANCES (UNLESS OTHERWISE NOTED): M-2461
B		JC		JC		
C		BAK		BAK		
D		BS		BS		



66" X 214" VERTICAL  
 STANDARD AIR RECEIVER

SCALE: NONE  
 DRAWING NO. 302465