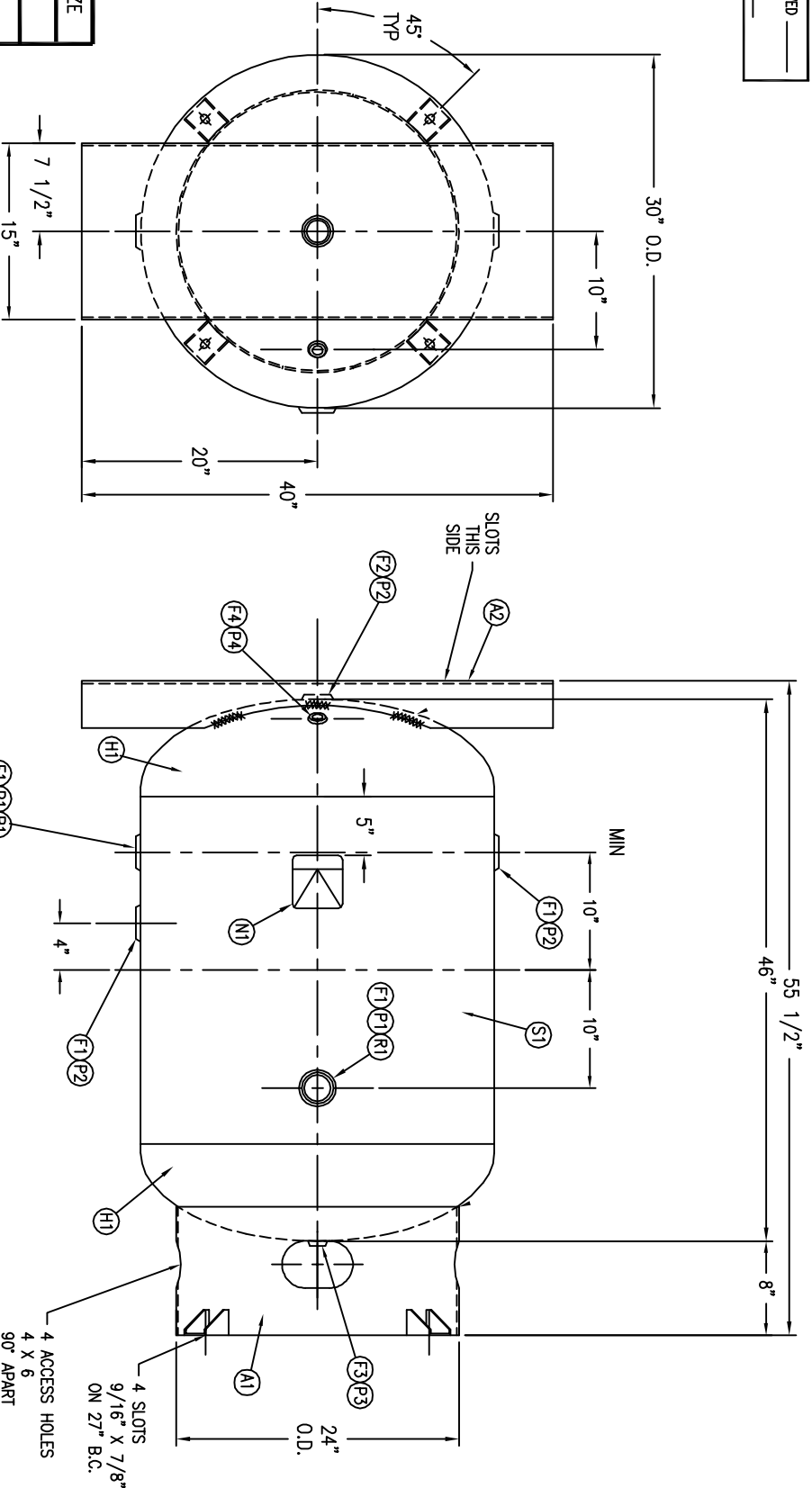


CODE/ADDENDUM \_\_\_\_\_ APPROVED \_\_\_\_\_  
 RELEASED FOR PRODUCTION \_\_\_\_\_  
 Q.C. \_\_\_\_\_ DATE \_\_\_\_\_



FIND NO.	NPT SIZE
F1	2
F2	2
F3	1/2
F4	1/4

SYM. DATE	BY	REVISION	APP	NOTES
A	EGB		TA	

SPECIFICATIONS	
O.D.: 30	LGTH: 46
MAWP: 200 PSI @ 400° F	RT MDMT: F @ PSI
EXMFT: X-RAY: CRN# F0628.1C	SH: HD: GAL: 120
	MATL: SA: 33 ft <sup>2</sup>
	WGT: 429#
	CULFT: 16
	CODE: ASME / NB
	PER DATE OF DWG/LAST REV
WELD DETAILS M-1932	
STD. TOLERANCES (UNLESS OTHERWISE NOTED) M-2461	

**MANCHESTER**  
 METRINT, APPS, DWG, 302

**VERTICAL AIR RECEIVER**  
**120 GALLON**

DRAWN BY	DATE	SCALE:	NONE
APP. BY	DATE	DRAWING NO.:	3022424

REF 203004601530  
 33624.1