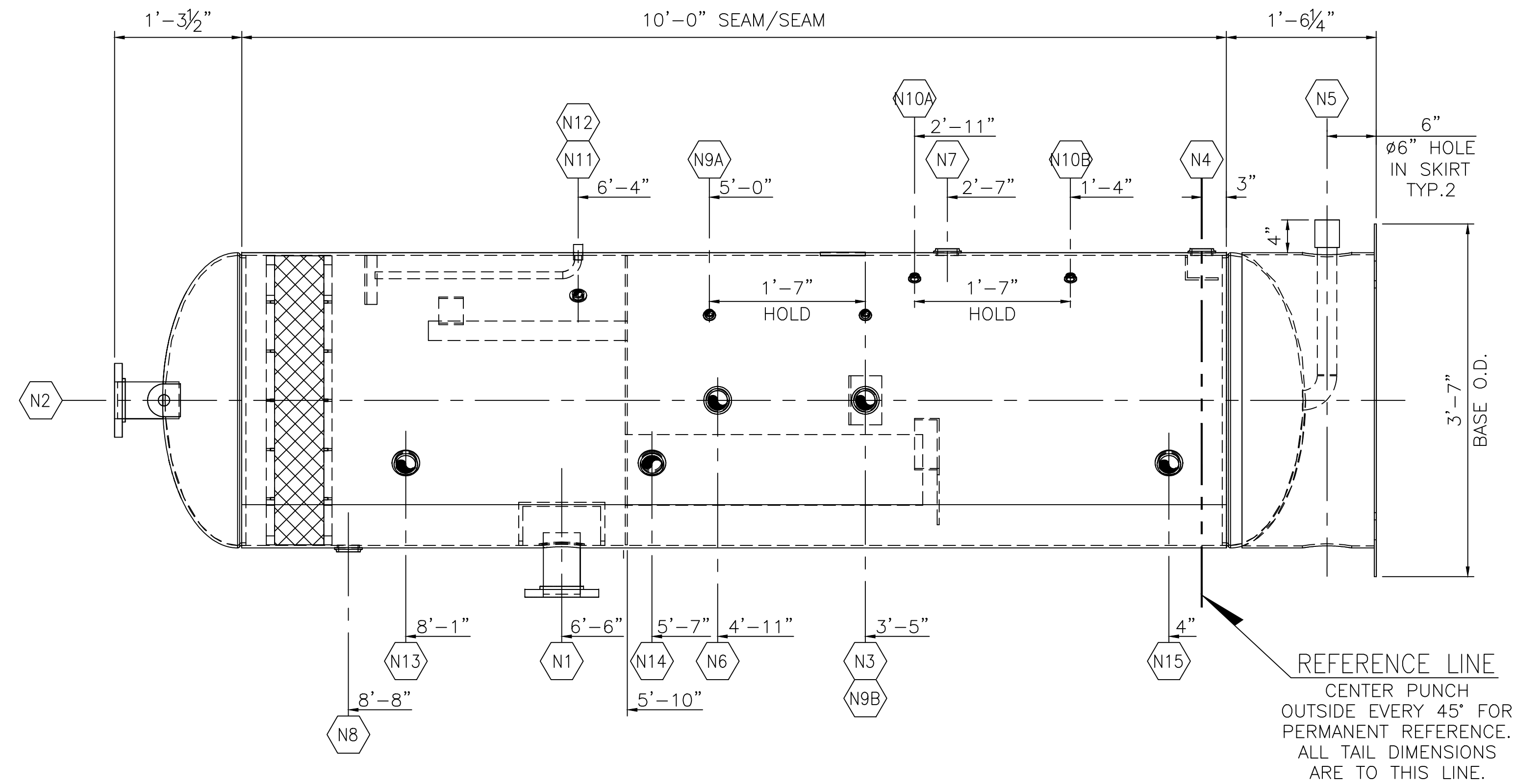
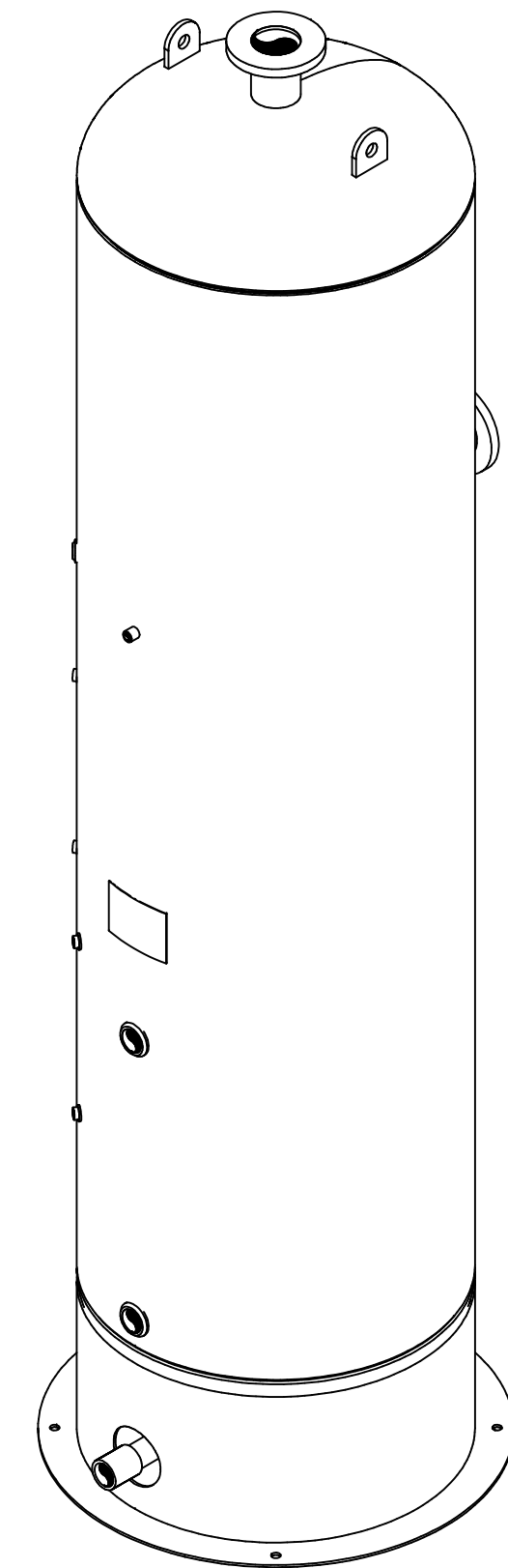


**PLAN VIEW**  
SCALE 1" = 1'-0"  
(TRUE ORIENTATION)



**ELEVATION VIEW**  
SCALE 1" = 1'-0"



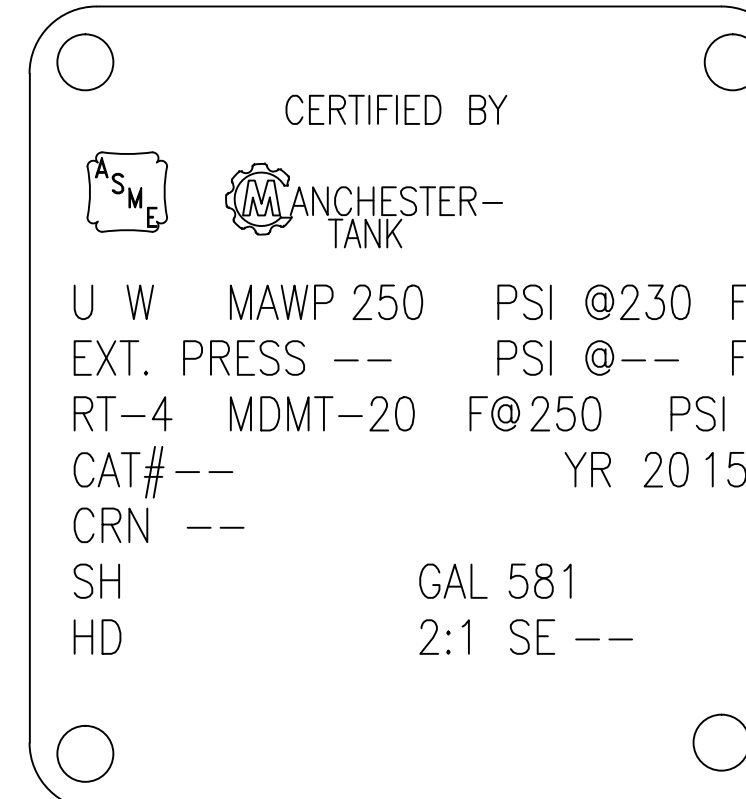
**ISOMETRIC VIEW**  
SCALE NONE

MARK	REQ'D.	SIZE	RATING & TYPE	SERVICE	NECK O.D.	NECK SCH.	O.S. PROJECTION	I.S.	REINF. PAD SIZE	WELDING DETAIL NO.	A	B	C
N15	1	2"	1500# NPT	LIQUID LLSD	-	-	-	-	-	W13	3/16"	-	-
N14	1	2"	1500# NPT	OIL HLSD	-	-	-	-	-	W13	3/16"	-	-
N13	1	2"	1500# NPT	LIQUID HLSD	-	-	-	-	-	W13	3/16"	-	-
N12	1	1/2"	3000# CPLG	PI/SUPPLY	-	-	-	-	-	W14	1/8"	-	-
N11	1	3/4"	1500# NPT	TEMPERATURE INDICATOR	-	-	-	-	-	W13	3/16"	-	-
N10B	1	1/2"	1500# NPT	INTERFACE LEVEL GAUGE (LOWER)	-	-	-	-	-	W13	3/16"	-	-
N10A	1	1/2"	1500# NPT	INTERFACE LEVEL GAUGE (UPPER)	-	-	-	-	-	W13	3/16"	-	-
N9B	1	1/2"	1500# NPT	OIL LEVEL GAUGE (LOWER)	-	-	-	-	-	W13	3/16"	-	-
N9A	1	1/2"	1500# NPT	OIL LEVEL GAUGE (UPPER)	-	-	-	-	-	W13	3/16"	-	-
N8	1	2"	1500# NPT	RELIEF	-	-	-	-	-	W13	3/16"	-	-
N7	1	2"	1500# NPT	INTERFACE LEVEL CONTROLLER	-	-	-	-	-	W13	3/16"	-	-
N6	1	2"	1500# NPT	OIL LEVEL CONTROLLER	-	-	-	-	-	W13	3/16"	-	-
N5	1	2"	3000# CPLG	DRAIN	-	-	FLUSH	-	-	W3	1/8"	-	-
N4	1	2"	1500# NPT	WATER OUTLET	-	-	-	-	-	W13	3/16"	-	-
N3	1	2"	1500# NPT	OIL OUTLET	-	-	-	-	-	W13	3/16"	-	-
N2	1	4"	150# RFSO	GAS OUTLET	4.50"	S/40	ELEV. 1.00"	-	-	W7/W15	1/4"	1/4"	-
N1	1	4"	150# RFSO	INLET	4.50"	S/40	6.00" 1.00"	-	-	W7/W15	3/8"	-	-

**NOZZLE SCHEDULE & WELDING DETAILS**

NOZZLE NOTES: 1) DRILL AND TAP 1/4" N.P.T. HOLE IN REINFORCING PADS. 2) INSIDE EDGES OF NOZZLE NECKS SHALL BE ROUNDED TO 1/8" RAD. OR HALF THE WALL THICKNESS IF LESS THAN 1/4". 3) GAUGE, GRIND OR CHIP INSIDE TO SOUND METAL BEFORE MAKING WELD "b". 4) NOZZLE PROJ. ARE FROM SHORT SIDE.

**NAMEPLATE DATA**



TOTAL WEIGHT = 2,250 LBS.

TOLERANCES  
(EXCEPT AS NOTED)  
FRACTIONAL  
± 1/8"  
DECIMAL  
± 0.125"  
ANGULAR  
± 1°

**FABRICATION NOTES:**

- UNLESS NOTED OTHERWISE, ALL WELDS ARE TO BE 3/16" FILLET WELDS.
- ALL FLANGE BOLT HOLES TO STRADDLE VESSEL CENTERLINES.
- EACH CONNECTION TO BE TAGGED W/ ABBREVIATION SERVICE DESCRIPTION



THIS DRAWING IS THE PROPERTY OF MANCHESTER TANK AND IS NOT TO BE USED FOR ANY PURPOSE OTHER THAN THAT FOR WHICH IT IS SPECIFICALLY FURNISHED.

CUSTOMER: MANCHESTER TANK

TITLE: VERTICAL 3 PHASE LP SEPARATOR  
36" OD x 10'-0" S/S @ 250 PSIG  
ELEVATION & PLAN VIEW

REV	DESCRIPTION	DATE	BY	CHK	SCALE	REV
A	ISSUED FOR INFORMATION	06/18/15	MCH	JEG	AS NOTED	
REV	DESCRIPTION	DATE	BY	CHK	SCALE	REV