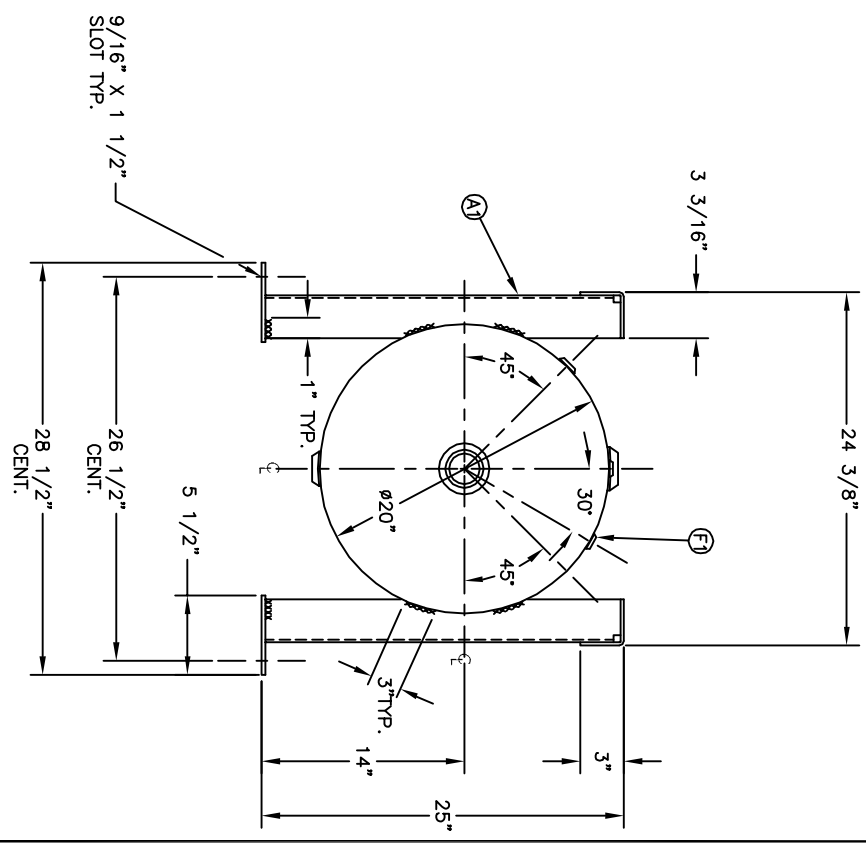
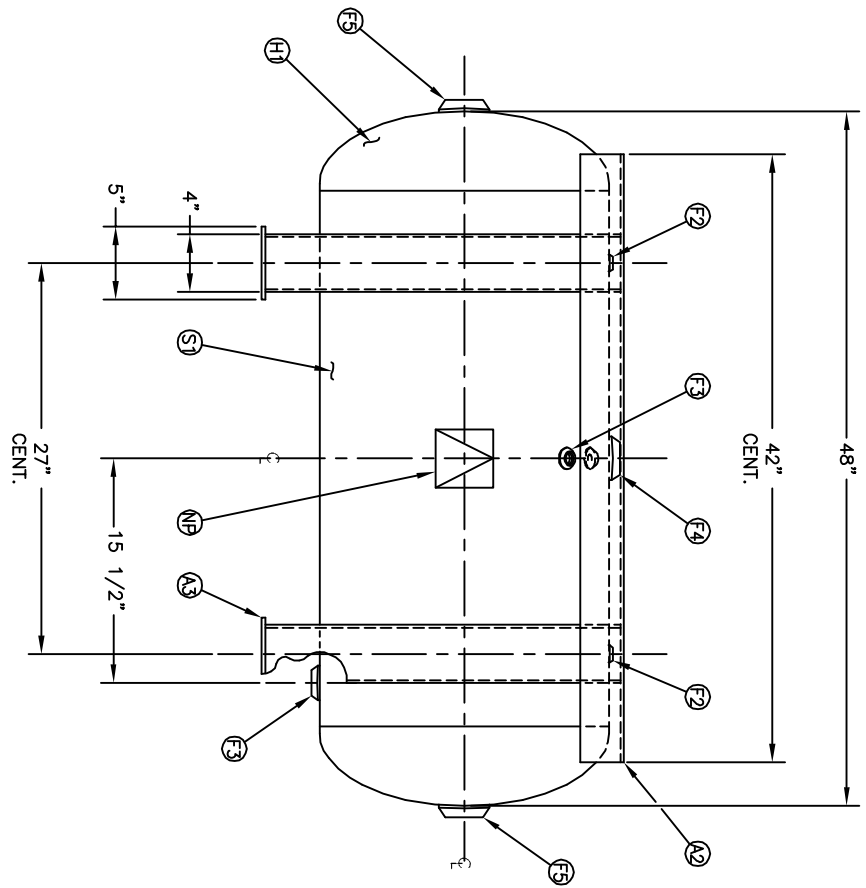


DETAIL OF FOOT

NO.	QTY	DESCRIPTION	SPEC	SUB-DWG.
S1	1			
H1	2			
F1	1	1/8" NPT 1500# FLAT FLG.		
F2	2	1/2" NPT 1500# FLAT FLG.		
F3	2	3/4" NPT 1500# RAD. FLG.		
F4	1	1 1/2" NPT 1500# RAD. FLG.		
F5	2	2" NPT 1500# FLAT FLG.		
A1	4	3/16" X 9 3/8" X 24 9/16" LEG		
A2	2	3/16" X 5 7/8" X 42" RAILS		
A3	4	1/4" X 5" X 5 1/2" PAD		
NP	1	ASME DATA PLATE		



REV	DATE	BY	REVISION	APP	NOTES

MANCHESTER <small>THE</small>		20" X 48" STD. HORIZ. FRAME-MOUNT REC.
DRAWN BY JR	DATE	SCALE: NONE
APP. BY JR	DATE	DRAWING NO. 305439

O.D. 20 LGTH. 48 MANP 200 PSI @ 450 F. RT- MOUNT-20 T@ 200 PSI EXMT UG20(0) TEST XRAY CRN F0516.1C	SH. HD. SA. 22.6 QLT. 8 SH HD CODE ASME SECT.VIII, DIV.1 PER DATE OF DWG/LAST REV	SPECIFICATIONS STD. TOLERANCES (UNLESS OTHERWISE NOTED): M-2461
---	--	--