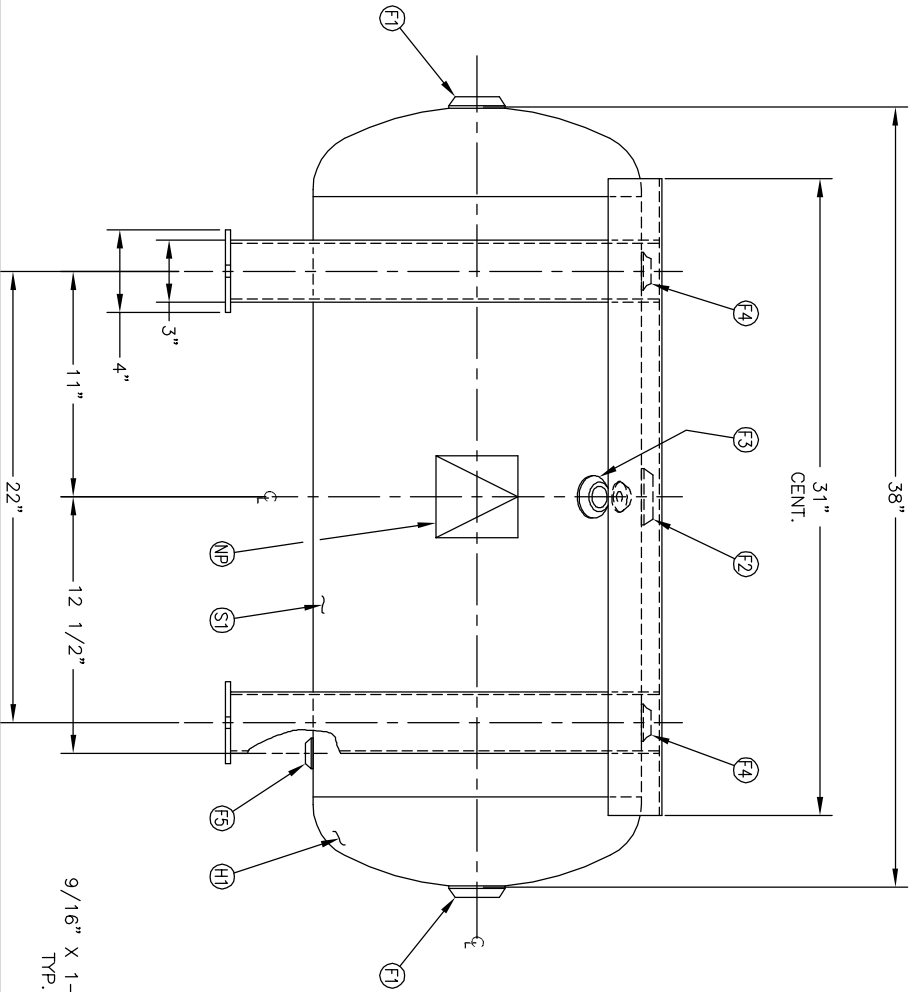
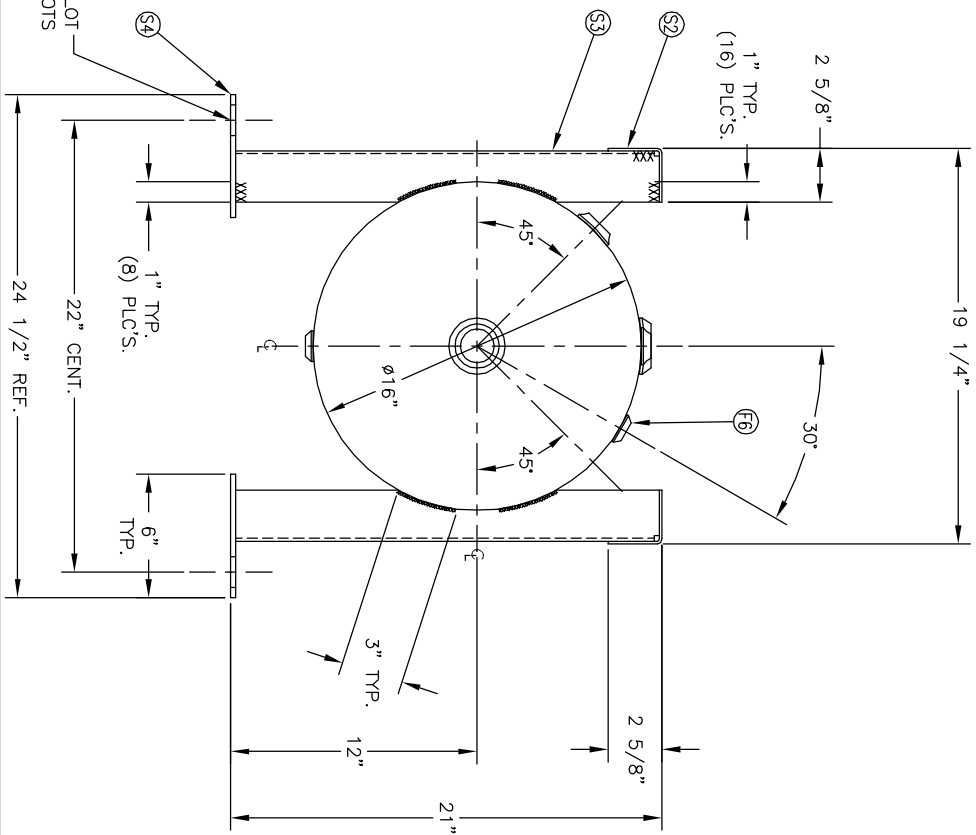


DETAIL OF FOOT



9/16" X 1-1/2" SLOT
TYP. (4) SLOTS



NO. QTY	DESCRIPTION	SPEC	SUB-DWG.
S1 1			
H1 2			
F1 2	1 1/2"-NPT 1500# FLAT FLANGE	SA-181-70	
F2 1	1 1/2"-NPT 1500# RADIAL FLANGE	SA-181-70	
F3 1	3/4"-NPT 1500# RADIAL FLANGE	SA-181-70	
F4 2	1/2"-NPT 1500# FLAT FLANGE	SA-181-70	
F5 1	1/4"-NPT 1500# FLAT FLANGE	SA-181-70	
F6 1	1/8"-NPT 1500# FLAT FLANGE	SA-181-70	
S2 2	1/8" X 5" X 31" FORMED RAIL	C1008	
S3 4	1/4" X 7 1/2" X 20 7/8" FORMED LEG	C1008	
S4 4	1/4" X 4" X 6" FOOT	C1008	
NP 1	ASME DATA PLATE	C1010	

SPECIFICATIONS

Q.D. 16 LGH. 38 SH. HD.
 MAMP 200 PSI @ 650 F.
 RT- MDMT -20 F @ 200 PSI GAL. 30 S.A. 14.4
 EXMT TEST PSI WT. 125# CUT. 4 HD
 XRAY CRN. F2151.1C CORR ALW SH. DV. 1
 WELD DETAILS: M-1932 PER DATE OF DWG/LAST REV
 STD. TOLERANCES (UNLESS OTHERWISE NOTED): M-2461

NOTES

APP XREF REV

REVISION

DATE BY



16" X 38" STD. HORIZ.
 FRAME-MOUNT REC.

DRAWN BY	DATE	SCALE:	NONE
JR		DRAWING NO.	305438
APP. BY	DATE		
JR			