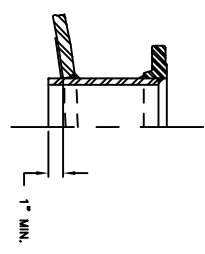
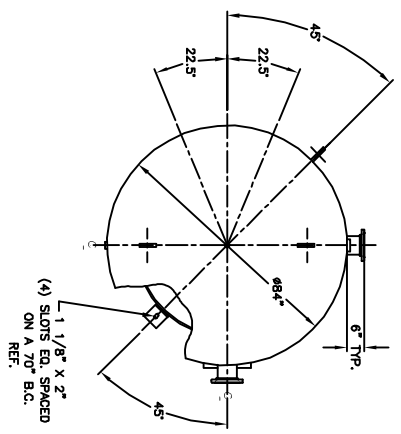


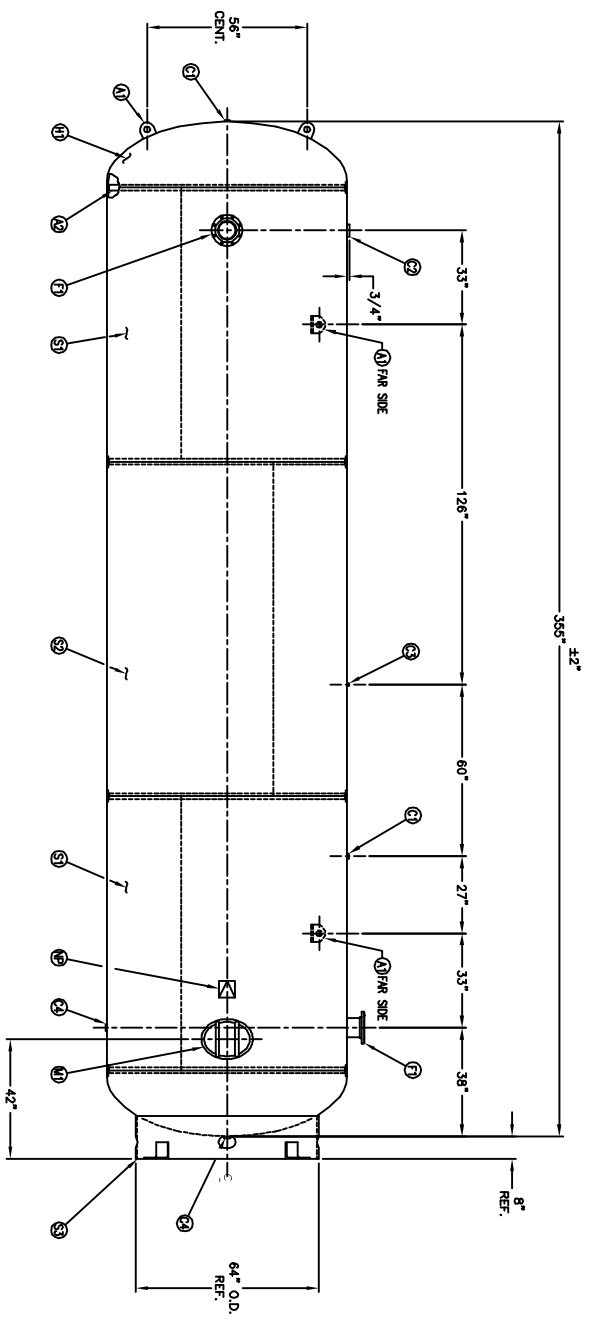
MANWAY DETAIL



6" NOZZLE DETAIL



(4) 1 1/8" X 2" SLOTS EQ. SPACED ON A 70° B.C. REF.



NO./QTY	DESCRIPTION	SPEC	SUB-DWG.
S1 2			
S2 1			
H1 2	1" NPT 3000# FULL COUPLING	SA-105	
C1 2	3" NPT 3000# HALF COUPLING	SA-105	
C2 1	1/2" NPT 3000# FULL COUPLING	SA-105	
C3 1	1/2" NPT 3000# HALF COUPLING	SA-105	
C4 2	1/2" NPT 3000# HALF COUPLING	SA-105	
F1 2	6" SCH 80 ANSI RF. SO. FLANGE	SA-105-B	
F1 2	6" SCH 80 PIPE X 7 1/2" LONG	SA-105-B	
M1 1	134 X 8 5/8" O.D. X 6 5/8" I.D. BACKING RING	C1008	
M1 1	12" X 16" X 1" X 6" 300# MANWAY	SA-105-C	
S3 1	STANDARD 6" SHRT ASSEMBLY FOR 64" DIA. TANK	AB6006	
A1 4	1" X 6" X 6" STANDARD LIFT LUG	AB6004	
A2 4	3/16" X 2" X 260 3/16" BACKING RING	C1010	
NP 1	ASME DATA PLATE	C1010	

SNL DATE	BY	REVISION	NOTES	APP	DATE
A	JB				
B	JC				
C	JC				

ITEM	DESCRIPTION	QTY	UNIT
01	8000 GALLON STANDAR	1	EA
02	YBRG. AIR REC.	1	EA

ITEM	DESCRIPTION	QTY	UNIT
01	8000 GALLON STANDAR	1	EA
02	YBRG. AIR REC.	1	EA

ENG. DATE _____
 D.C. DATE _____



8000 GALLON STANDAR
 YBRG. AIR REC.
 DRAWING NO. 309198