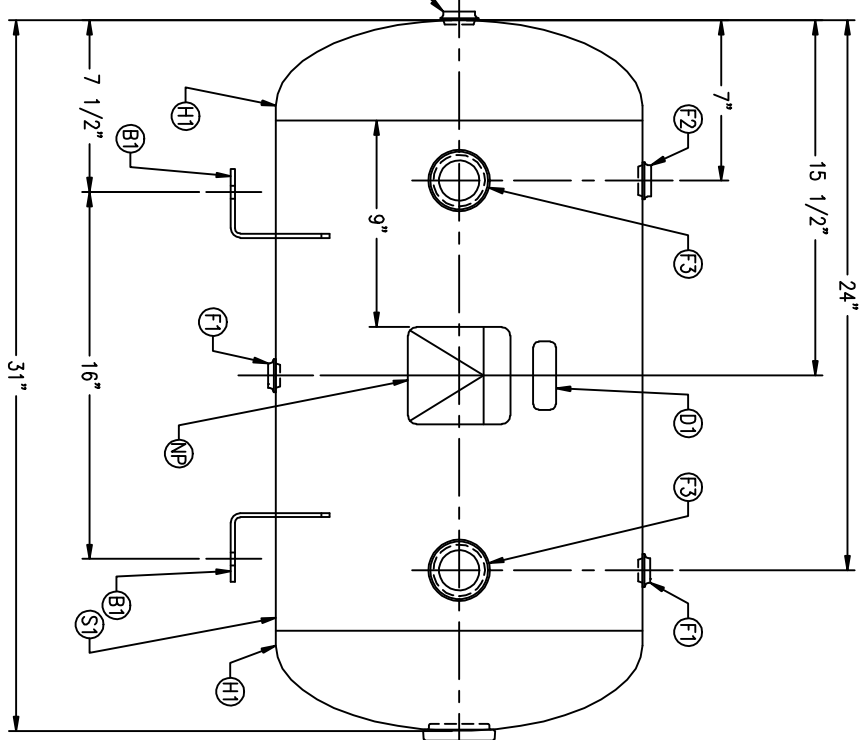
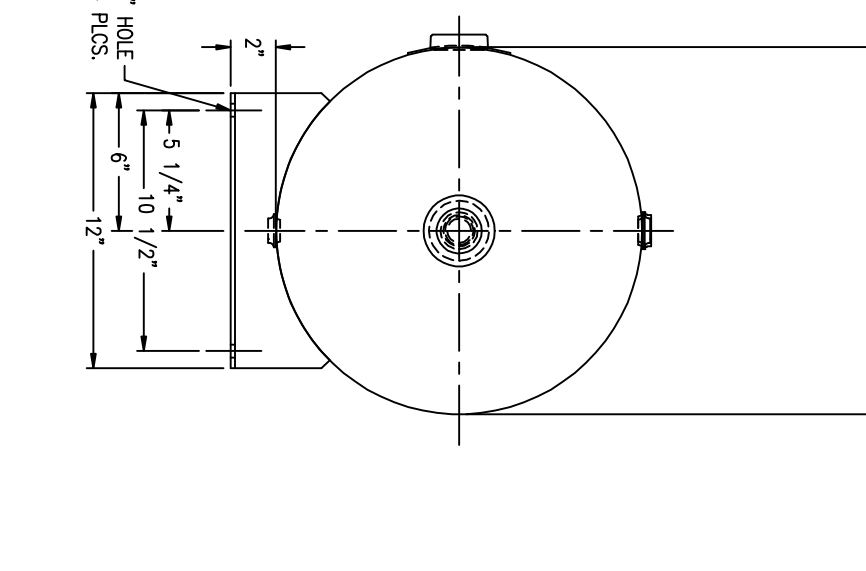


CODE/ADDENDA 2004/2006 APPROVED KM
 RELEASED FOR PRODUCTION
 Q.C. _____ DATE _____

FIND NO.	NPT SIZE
F1	1/2
F2	3/4
F3	1 1/2
F4	2



NOTES
 1. ALL PLUGS TO BE LOOSENED TO HAND TIGHT PLUS ONE HALF TURN PRIOR TO SHIPMENT.




S/M	DATE	BY	REVISION

APP	XREF	REV
	C1127	

SPECIFICATIONS
 O.D. 16 LGTH. 31
 MAMP 200 PSI @ 650 F
 CRN F2151.1C
 WELD DETAILS: M-1932
 STD. TOLERANCES (UNLESS OTHERWISE NOTED): M-2461

QAL. 23.8 S.A. 11.6
 WT. 72# CULFT. 3.2
 CODE: ASME SEC. VIII DIV. I,
 LATEST EDITION & ADDENDA

HORIZONTAL AIR RECEIVER



MANCHESTER
 \CORP2\DWG 304

SCALE: NONE
 DRAWING NO. 304944

DRAWN BY: _____ DATE: _____
 APP. BY: _____ DATE: _____