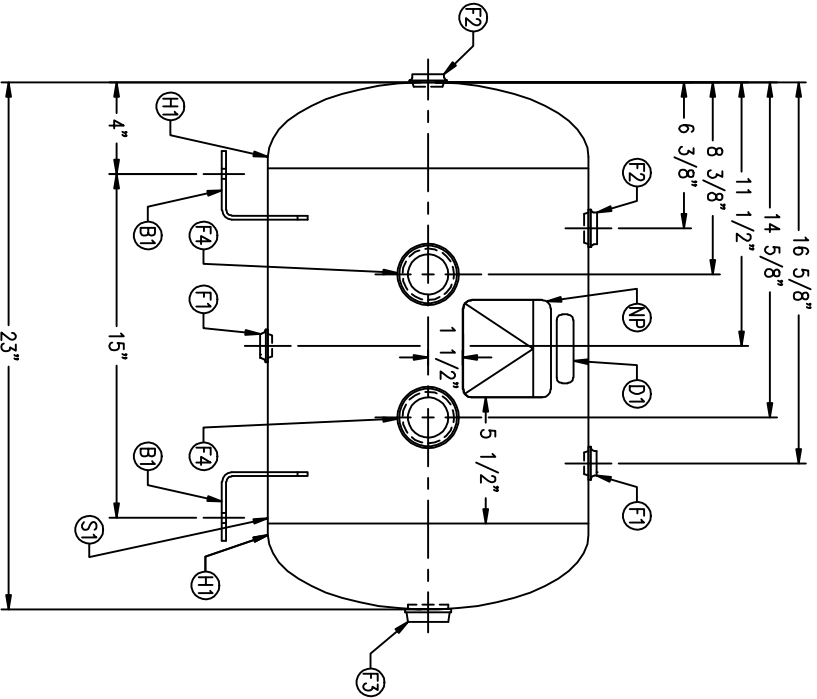


CODE/ADDENDA 2004/2006 APPROVED KM  
 RELEASED FOR PRODUCTION  
 Q.C. \_\_\_\_\_ DATE \_\_\_\_\_

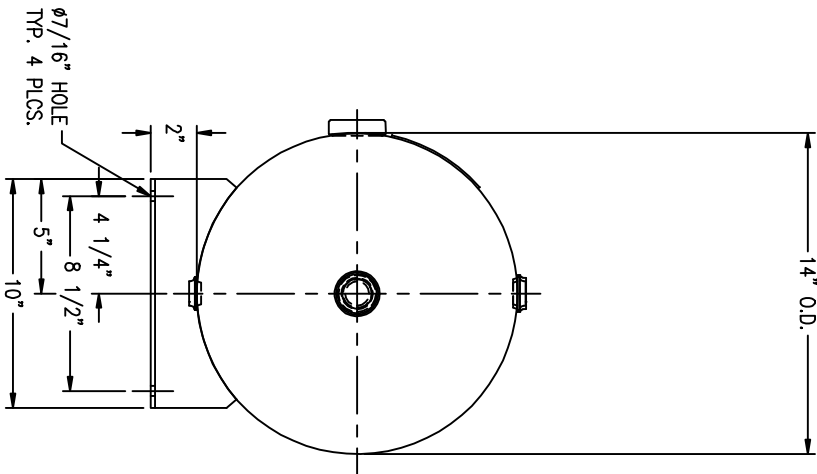


| FIND NO. | NPT SIZE |
|----------|----------|
| F1       | 1/2      |
| F2       | 3/4      |
| F3       | 1        |
| F4       | 1 1/2    |

NOTES  
 1. ALL PLUGS TO BE LOOSENED TO HAND TIGHT PLUS A QUARTER TURN WITH A WRENCH PRIOR TO SHIPMENT.

SPECIFICATIONS

O.D. 14 LGTH. 23  
 MAMP 200 PSI @ 650 F  
 CRN H5605.5123467890



\\CORP2\DWG 304

HORIZONTAL AIR RECEIVER

|          |      |                    |
|----------|------|--------------------|
| DRAWN BY | DATE | SCALE: NONE        |
| APP. BY  | DATE | DRAWING NO. 304938 |

|        |      |    |          |           |     |
|--------|------|----|----------|-----------|-----|
| SYMBOL | DATE | BY | REVISION | APP. XREF | REV |
|        |      |    |          | C1099     |     |