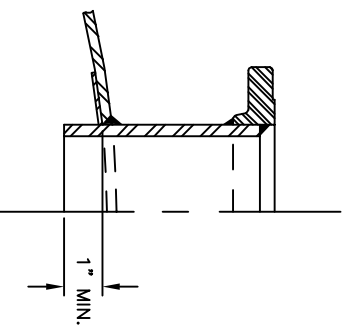
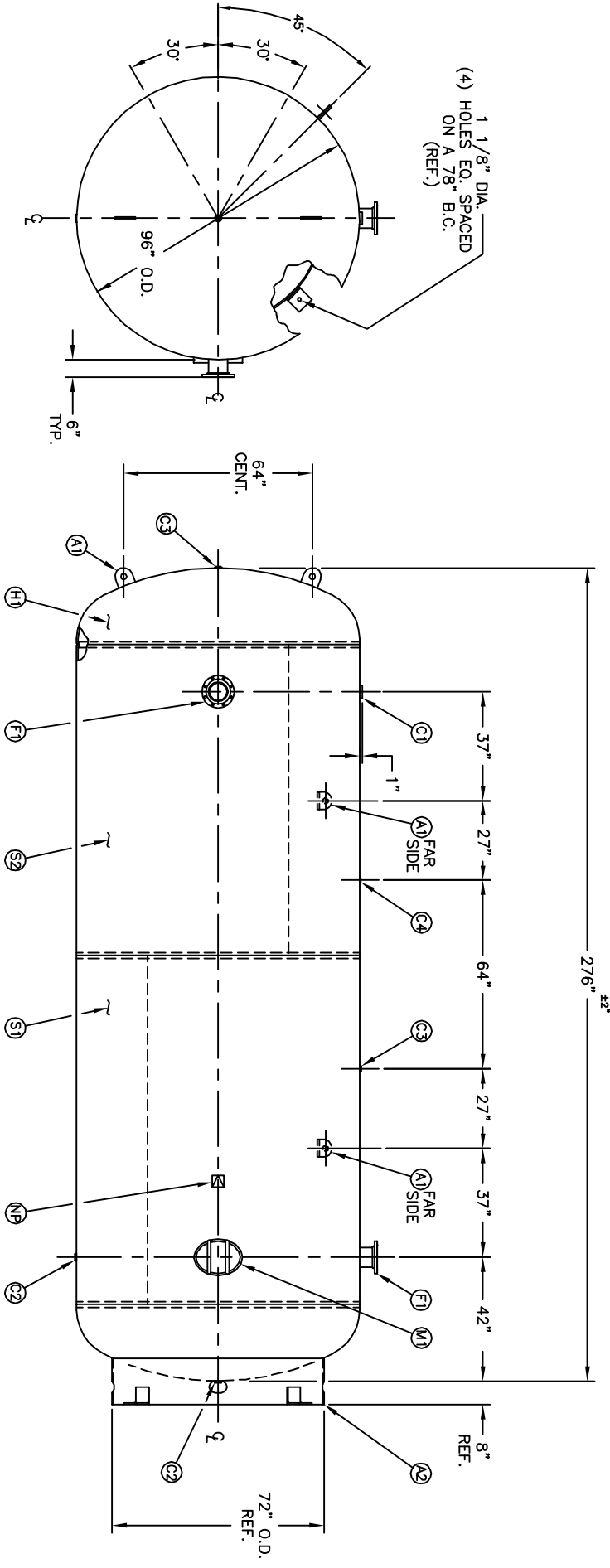


MANWAY DETAIL



6" NOZZLE DETAIL

NO. QTY	DESCRIPTION	SPEC	SUB-DWG.
S1 1			
S2 1			
H1 2			
C1 1	3"-NPT 3000# HALF COUPLING	SA-105	
C2 2	1 1/4"-NPT 3000# HALF COUPLING	SA-105	
C3 2	1"-NPT 3000# FULL COUPLING	SA-105	
C4 1	1/4"-NPT 3000# FULL COUPLING	SA-105	
F1 2	6"-150# ANSI RF-SO. FLANGE	SA-105	
F2 2	6" SCH.80 PIPE X 7 3/4" LONG	SA-106-B	
F1 2	.134 X 8 5/8" O.D. X 6 5/8" I.D. BACKING RING	C1008	
M1 1	12" X 16" X 3/4" X 4" 300# MANWAY	SA-106-C	
A1 4	1" X 6" X 6" STANDARD LIFT LUG		
A2 1	STANDARD 8" SKIRT & CLIP ASSY. FOR 96" DIA.		
A3 3	3/16" X 2" X 297 7/8" BACKING RING	SA-36	
NP 1	ASME DATA PLATE	C1010	



(4) HOLES EQ. SPACED ON A 78" B.C. (REF.)

SYMBOL	DATE	BY	REVISION	NOTES	SPECIFICATIONS
A	JC	AMA			<p>O.D. 96 LGH. 276 SH. HD.</p> <p>MANP 137 PSI @ 450 F. HD.</p> <p>RT- MDMT -20 F @ 137 PSI GAL. 8000 SA. 617</p> <p>EXMT TEST WT. 14000 CU.FT. 1069.5</p> <p>CORR ALW SH HD</p> <p>CEN. N/A CODE ASME SECT.VIII, DIV.1</p> <p>WELD DETAILS: M-1932 PER DATE OF DWG/LAST REV</p> <p>STD. TOLERANCES (UNLESS OTHERWISE NOTED): M-2461</p>

MANCHESTER
VALVE FABRICATORS

8000 GALLON
STD. VERT. AIR REC.

Q:\3000

DRAWN BY	DATE	SCALE:	NONE
APP. BY	DATE	DRAWING NO.	304907