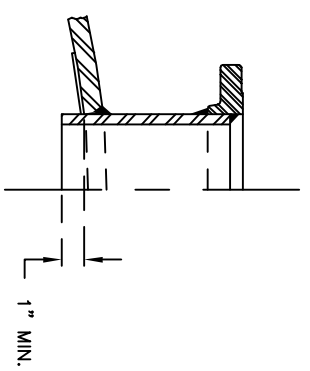
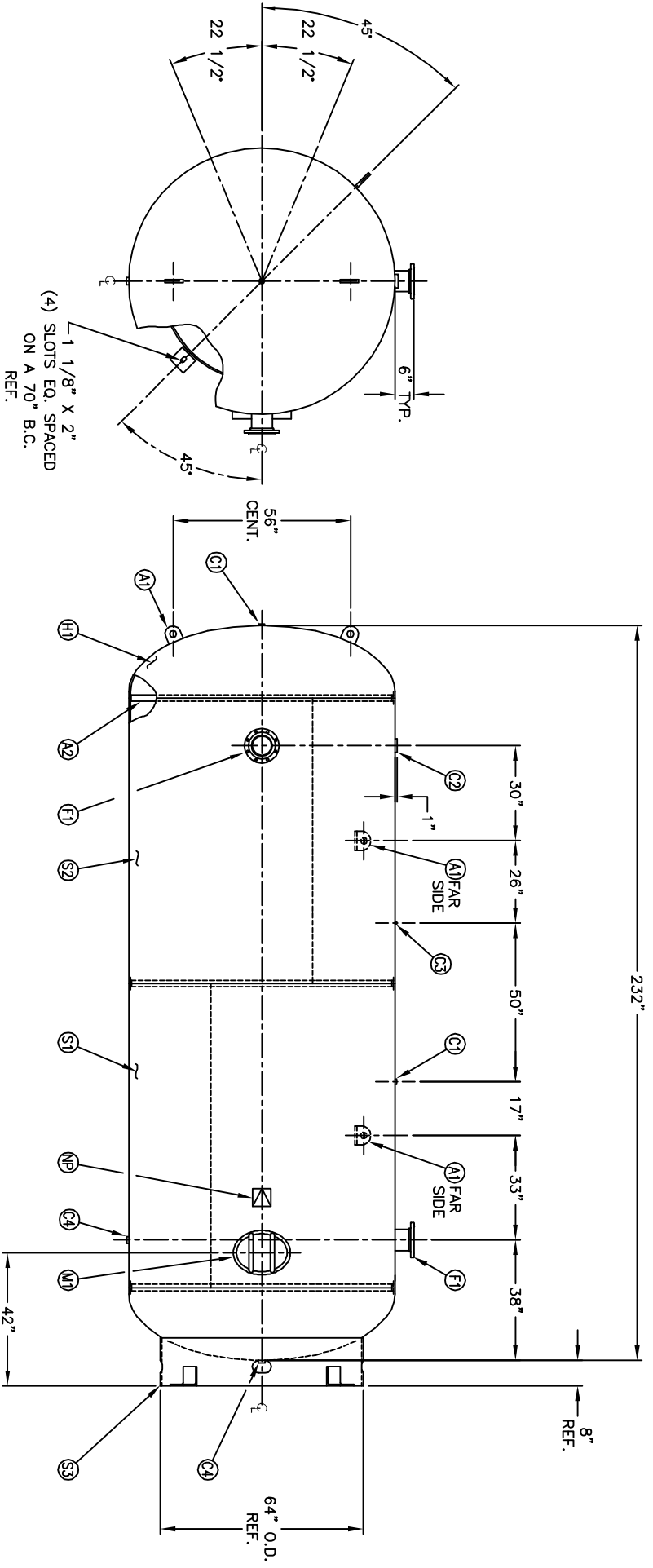


MANWAY DETAIL



6" NOZZLE DETAIL

| NO. QTY | DESCRIPTION | SPEC | SUB-DWG. |
|---------|---|-----------|----------|
| S1 1 | | | |
| S2 1 | | | |
| H1 2 | .489 MIN. 84" O.D. 2:1 ELLIP. HEAD 2" S.F. | SA-516-70 | |
| C1 2 | 1"-NPT 3000# FULL COUPLING | SA-105 | |
| C2 1 | 3"-NPT 3000# HALF COUPLING | SA-105 | |
| C3 1 | 1/4"-NPT 3000# FULL COUPLING | SA-105 | |
| C4 2 | 1 1/4"-NPT 3000# HALF COUPLING | SA-105 | |
| F1 2 | 6" 300# ANSI RF. SO. FLANGE | SA-105 | |
| F1 2 | 6" S/XXH PIPE X 7 1/2" LONG | SA-106-B | |
| F1 2 | .134 X 8 5/8" O.D. X 6 5/8" I.D. BACKING RING | C1008 | |
| M1 1 | 12" X 16" X 1" X 6" 300# MANWAY | SA-106-C | |
| S3 1 | STANDARD 8" SKIRT ASSEMBLY FOR 84" DIA. TANK | | |
| A1 4 | 1" X 6" X 6" STANDARD LIFT LUG | | |
| A2 3 | 3/16" X 2" X 260 3/16" BACKING RING | C1010 | |
| NP 1 | ASME DATA PLATE | C1010 | |



ALL FLANGE BOLT HOLES TO STRADDLE CENTER LINES
BREAK ALL EXPOSED INTERIOR NOZZLE EDGES

SPECIFICATIONS

| | | |
|--|------------------------------|----------------|
| 0.D. 84 | LGTH. 232 | SH. |
| MWP 200 PSI @ 450 F. | HD. | |
| RT - MDMT -20 F @ 200 PSI | QAL. 5000 | S.A. 455.01 |
| EXMT TEST | WT. 10800 | CU. FT. 683.69 |
| CEN. N/A | CODE ASME SECT. VIII, DIV. 1 | SH. HD |
| WELD DETAILS: M-1932 | PER DATE OF DWG/LAST REV | |
| STD. TOLERANCES (UNLESS OTHERWISE NOTED): M-2461 | | |

MANCHESTER TANK
Q:\3000

84" X 232" VERT. STANDARD AIR RECEIVER

SCALE: NONE
DRAWING NO. 304718

DATE: _____
DATE: _____

REVISION

| SYMBOL | DATE | BY |
|--------|------|----|
| A | JC | JC |

NOTES

| APP | DATE | BY |
|-----|------|----|
| JC | | |