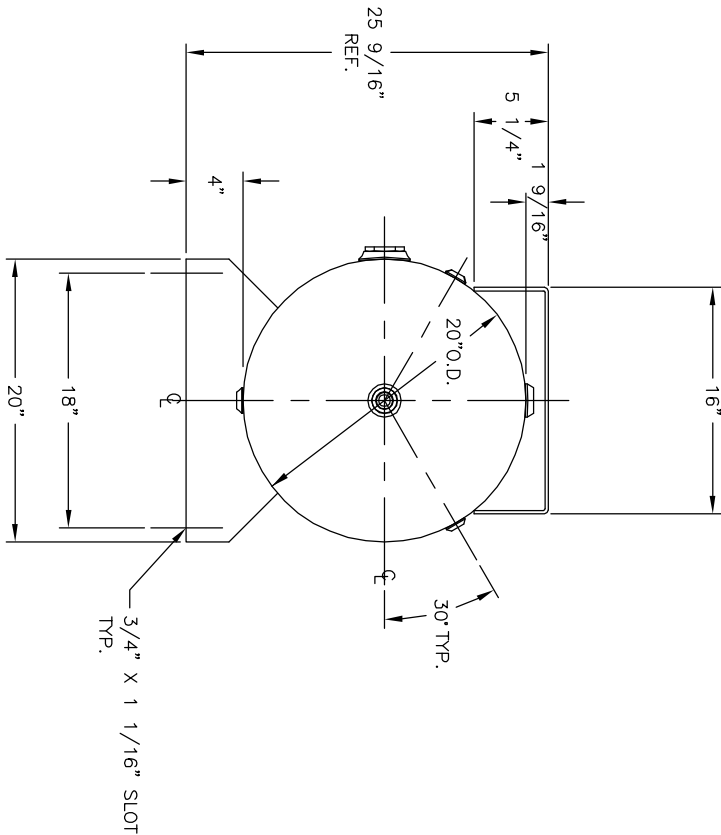
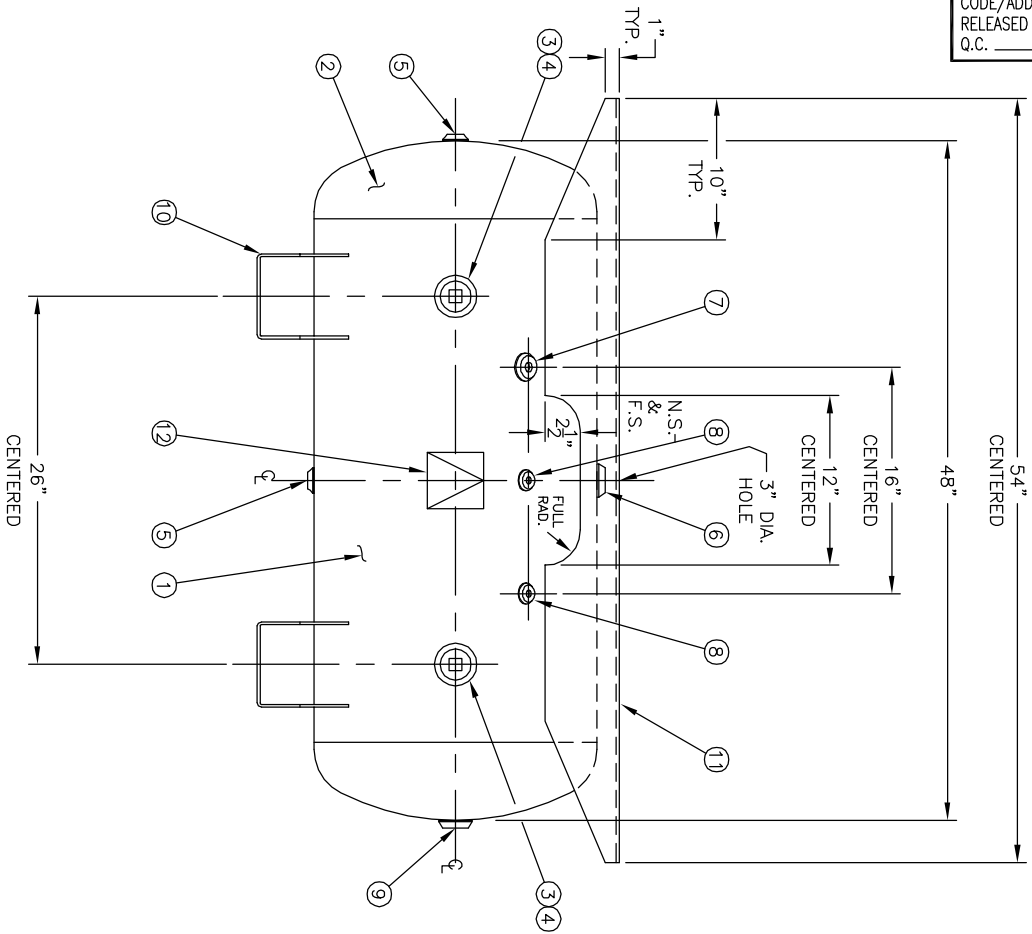


CODE/ADDENDA 2010/2011A APPROVED
 RELEASED FOR PRODUCTION
 Q.C. _____ DATE _____



NO.	QTY.	DESCRIPTION	SPEC	SUB-DWG.
1	1			
2	2	2\"-NPT 1500# RADIAL FLANGE	SA-181-70	
3	2	2\"-NPS PLUG	SA-181-70	
4	2	1/2\"-NPT 1500# FLAT FLANGE	SA-181-70	
5	2	1\"-NPT 1500# RADIAL FLANGE	SA-181-70	
6	1	3/8\"-NPT 1500# FLAT FLANGE	SA-181-70	
7	1	1/4\"-NPT 1500# FLAT FLANGE	SA-181-70	
8	1	1\"-NPT 1500# FLAT FLANGE	SA-181-70	
9	1	STANDARD SADDLE FOR 20\" DIA. TANK		AB4492
10	1	1/4\" X 25 1/2\" X 54\" PLATFORM	C1008	
11	1	ASME DATA PLATE	C1010	
12	1			

SPECIFICATIONS

O.D. 20 LGTH. 48 SH.
 MAMP 200 PSI @ 650 F. HD.
 RT- MDMT -20 F @ 200 PSI GAL 60 S.A. 7.9
 EXMT TEST PSI WT. 240 QULT. 22.6
 CRN F0516.1C COOR ALW SH HD
 WELD DETAILS: M-1932 CODE: ASME SEC.VIII DIV. 1
 STD. TOLERANCES (UNLESS OTHERWISE NOTED): M-2461 LATEST EDITION & ADDENDA



Q.: 3000

60 GALLON
 STD. HORIZ. W/EXTENDED PLATFORM

DRAWN BY: 8. J. [Signature]
 DATE: _____
 SCALE: NONE

APP. BY: _____
 DATE: _____
 DRAWING NO.: 302693

REVISION

SYML DATE BY
 3/3

APP
 3/3

NOTES

26\"/>

NOTES

SPECIFICATIONS

O.D. 20 LGTH. 48 SH.
 MAMP 200 PSI @ 650 F. HD.
 RT- MDMT -20 F @ 200 PSI GAL 60 S.A. 7.9
 EXMT TEST PSI WT. 240 QULT. 22.6
 CRN F0516.1C COOR ALW SH HD
 WELD DETAILS: M-1932 CODE: ASME SEC.VIII DIV. 1
 STD. TOLERANCES (UNLESS OTHERWISE NOTED): M-2461 LATEST EDITION & ADDENDA



Q.: 3000

60 GALLON
 STD. HORIZ. W/EXTENDED PLATFORM

DRAWN BY: 8. J. [Signature]
 DATE: _____
 SCALE: NONE

APP. BY: _____
 DATE: _____
 DRAWING NO.: 302693